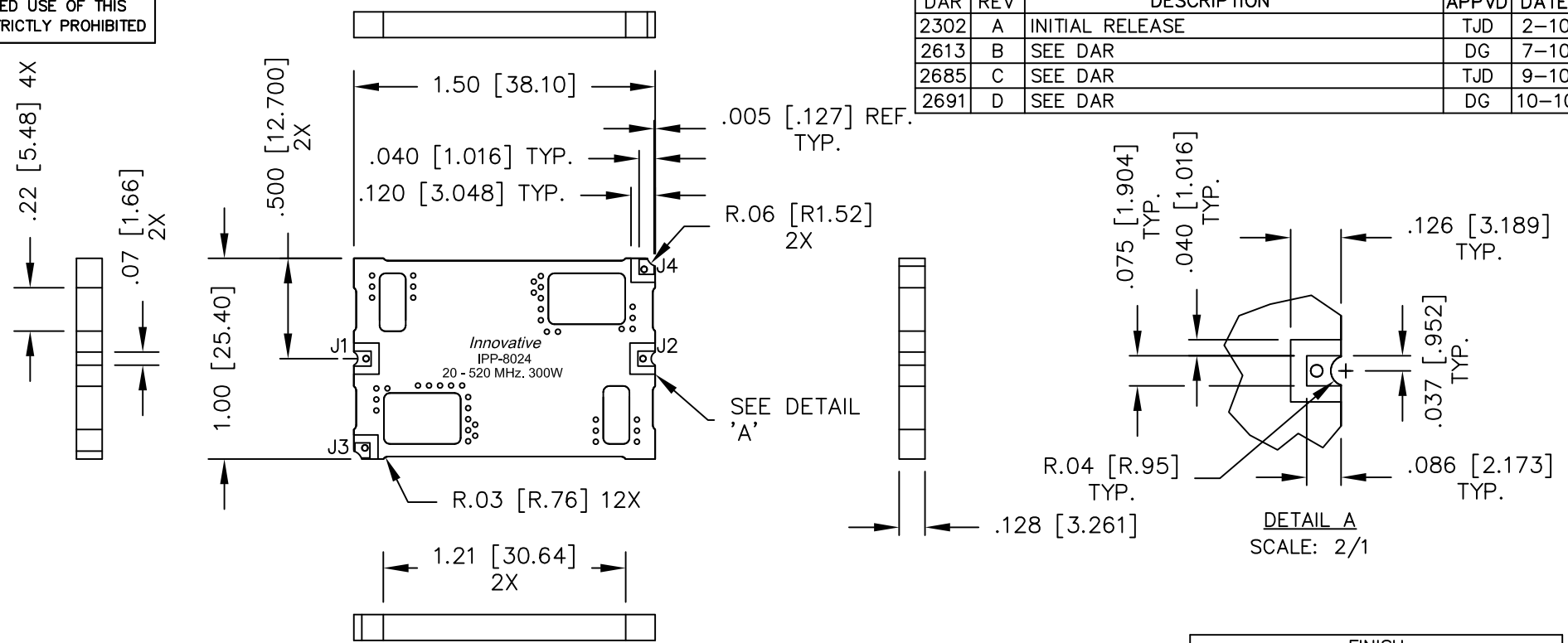


UNAUTHORIZED USE OF THIS DRAWING IS STRICTLY PROHIBITED

DAR	REV	DESCRIPTION	APPVD	DATE
2302	A	INITIAL RELEASE	TJD	2-10
2613	B	SEE DAR	DG	7-10
2685	C	SEE DAR	TJD	9-10
2691	D	SEE DAR	DG	10-10



- NOTES:**
1. SEE SMD COUPLER APPLICATION NOTE FOR FURTHER INFORMATION.
 2. AVAILABLE IN TAPE AND REEL. SEE SMD COUPLER APPLICATION NOTE FOR FURTHER INFORMATION.
 3. DO NOT EXCEED 195°C WHEN INSTALLING COUPLER.

ELECTRICAL SPECIFICATIONS

FREQUENCY:	20 - 520 MHz.
INSERTION LOSS:	<0.25 dB
VSWR:	<1.25:1
DIRECTIVITY:	>20dB
COUPLING:	50.0±1dB
COUPLED FLATNESS:	±0.6dB
POWER:	300 WATT
TEMPERATURE:	-55°C TO 85°C

FINISH	
P/N	TYPE
IPP-8024	TIN/LEAD

PORT CONFIGURATION			
INPUT	OUTPUT	FORWARD COUPLED	REFLECTED COUPLED
J1	J2	J3	J4
J2	J1	J4	J3

MATERIAL	DWN DG	DATE 2-10	Innovative Power Products		
FINISH SEE FINISH CHART	ENG TJD	DATE 2-10			
TOLERANCE	CAGE CODE: 437R2		TITLE OUTLINE SMD COUPLER, DDC, 20 - 520 MHz. 300W		
IN [MM]	SHEET OF 1 1	SCALE 2:1	SIZE B	P/N IPP-8024*	REV. D