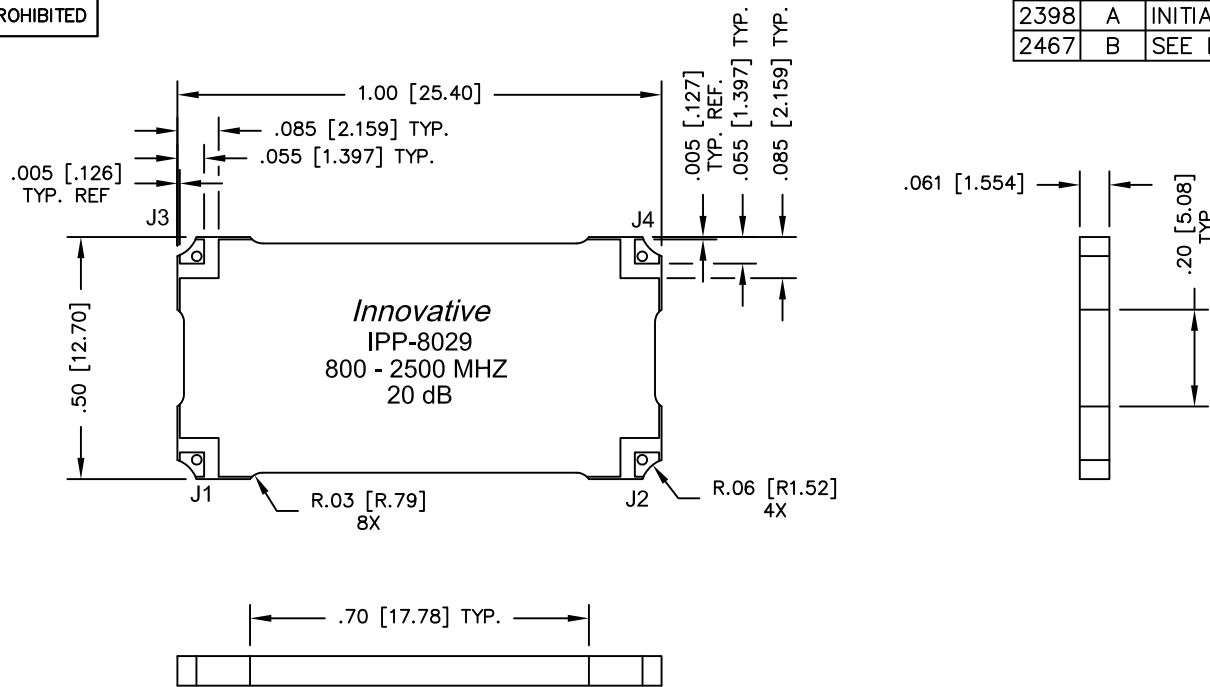


UNAUTHORIZED USE OF THIS  
DRAWING IS STRICTLY PROHIBITED

DAR	REV	DESCRIPTION	APPVD	DATE
2398	A	INITIAL RELEASE	DG	3-10
2467	B	SEE DAR	DG	5-10



FINISH	
P/N	TYPE
IPP-8029	TIN/LEAD
IPP-8029RT	RoHS MATTE TIN
IPP-8029RG	RoHS NICKEL GOLD

- NOTES:**
- SEE SMD COUPLER APPLICATION NOTE FOR FURTHER INFORMATION.
  - PARTS WITH RoHS MATT TIN AND RoHS NICKEL GOLD FINISHES ARE RoHS COMPLIANT.
  - AVAILABLE IN TAPE AND REEL. SEE SMD COUPLER APPLICATION NOTE FOR FURTHER INFORMATION.

**ELECTRICAL SPECIFICATIONS**

FREQUENCY: 800 - 2500 MHz.  
 INSERTION LOSS: <0.25 dB  
 VSWR: <1.25:1  
 COUPLING: 20dB ±1.5dB  
 COUPLED FLATNESS: ±0.75 dB  
 DIRECTIVITY: >20 dB  
 POWER: 150 WATT  
 TEMPERATURE: -55°C TO +85°C

PORT CONFIGURATION			
INPUT	OUTPUT	FORWARD COUPLED	REFLECTED COUPLED
J1	J2	J3	J4 ADD 50Ω TERMINATION
J1	J2	J3 ADD 50Ω TERMINATION	J4
J2	J1	J4	J3 ADD 50Ω TERMINATION
J2	J1	J4 ADD 50Ω TERMINATION	J3

MATERIAL	DWN S.Cornell	DATE 3-25-10	<b>Innovative</b> <i>Power</i> <b>Products</b>		
FINISH	ENG DG	DATE 3-10			
SEE FINISH CHART	MANUF	DATE	TITLE OUTLINE, SMD COUPLER		
TOLERANCE	CAGE CODE: 437R2		SDC, 800-2500 MHz. 20dB 150W		
IN [MM]	SHEET 1 OF 1	SCALE 4:1	SIZE B	P/N IPP-8029	REV. B