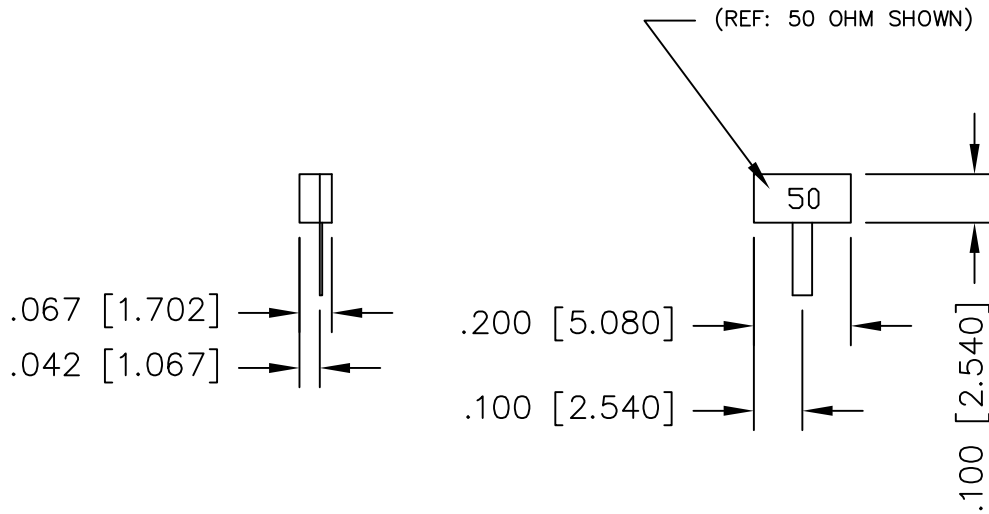


UNAUTHORIZED USE OF THIS  
DRAWING IS STRICTLY PROHIBITED

DAR	REV	DESCRIPTION	APPVD	DATE
1221	A	INITIAL RELEASE	TJD	10-06
2035	B	SEE DAR	DG	9-09
3502	C	SEE DAR	DG	2-12



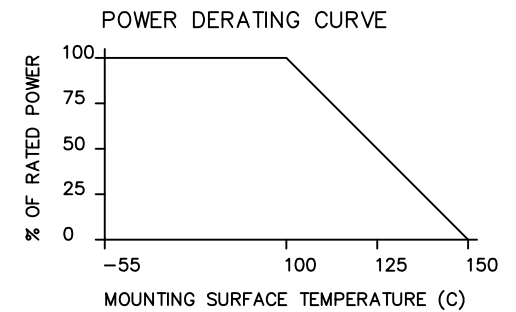
NOTES

- LEAD MATERIAL:  
99.99% PURE SILVER  
.040 [1.016] WIDE x .005 [.172] THICK
- LEAD LENGTH: .150 [3.810] MIN.
- SUBSTRATE MATERIAL: BeO  
COVER MATERIAL: Al<sub>2</sub>O<sub>3</sub>
- DIMENSIONS: INCHES, [mm]
- BOTTOM SIDE METALIZATION:  
THICK FILM PLATINUM SILVER

ELECTRICAL SPECIFICATIONS

INPUT POWER: 30 WATT  
 FREQ: DC - 4.2 GHz.  
 VSWR: 1.20:1 DC - 3 GHz.  
 1.30:1 @ 4.2 GHz.

PART NO.	VALUE	TOLERANCE
IPP-TB101-50	50 OHMS	+/- 5%



MATERIAL [3]	DWN DG	DATE 10-06				
	ENG TJD	DATE 10-06				
FINISH [5]	MANUF TP	DATE 10-06	TITLE			
	CAGE CODE: 437R2		TERMINATION, 30 WATT, FLANGELESS			
TOLERANCE IN [MM]	.XX ±.02 [.50]	SHEET OF 1 1	SCALE 4:1	SIZE B	P/N IPP-TB101C-XXX	REV. C
	.XXX ±.010 [.254]					