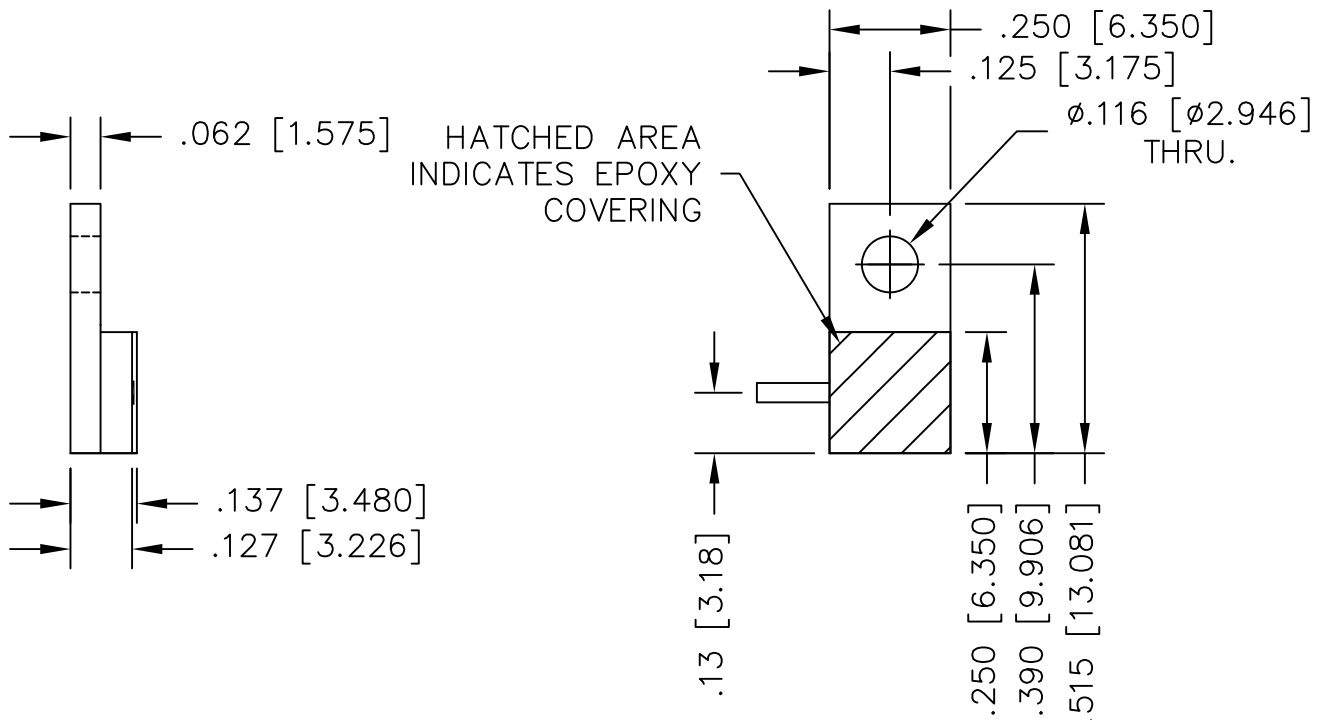


UNAUTHORIZED USE OF THIS  
DRAWING IS STRICTLY PROHIBITED

DAR	REV	DESCRIPTION	APPVD	DATE
1306	A	INITIAL RELEASE	TP	6-07
1497	B	CHANGE LEAD HEIGHT	DG	8-08
2190	C	SEE DAR	DG	12-09
2395	D	SEE DAR	DG	3-10
2561	E	SEE DAR	TJD	6-10
3545	F	SEE DAR	DG	3-12

ELECTRICAL SPECIFICATIONS

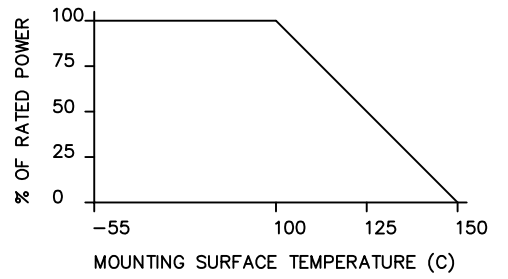
PART NO.	VALUE	INPUT POWER	FRERQUENCY	VSWR
IPP-TB218-25	25 OHMS ±5%	50 WATT	DC-2.5 GHz	2±0.2:1
IPP-TB218-50	50 OHMS ±5%	50 WATT	DC-5.0 GHz	<1.10:1 DC-4.2 GHz <1.25:1 DC-6.0 GHz
IPP-TB218-100	100 OHMS ±5%	50 WATT	DC-2.5 GHz	2±0.2:1



NOTES:

1. LEAD MATERIAL: 99.99% PURE SILVER, .040 [1.016] WIDE x .005 [.127] THICK x .150 [3.810] MIN. LONG.
2. SUBSTRATE MATERIAL: BeO COVER MATERIAL: EPOXY
3. FLANGE MATERIAL: COPPER PLATING: NICKEL
4. LEAD(S) WELDED TO SUBSTRATE.

POWER DERATING CURVE



MATERIAL	<u>2</u> <u>3</u>	DWN DG	DATE 6-07	<b>Innovative</b> <i>Power</i> <b>Products</b>
FINISH	<u>3</u>	ENG TJD	DATE 6-07	
TOLERANCE	.XX ±.02 [.50] IN [MM] .XXX ±.010 [.254]	MANUF TP	DATE 6-07	TITLE
		CAGE CODE: 437R2		TERMINATION, 50 WATT, FLANGE
		SHEET OF	SCALE	P/N
		1 1	4:1	IPP-TB218-XXX
				REV. F