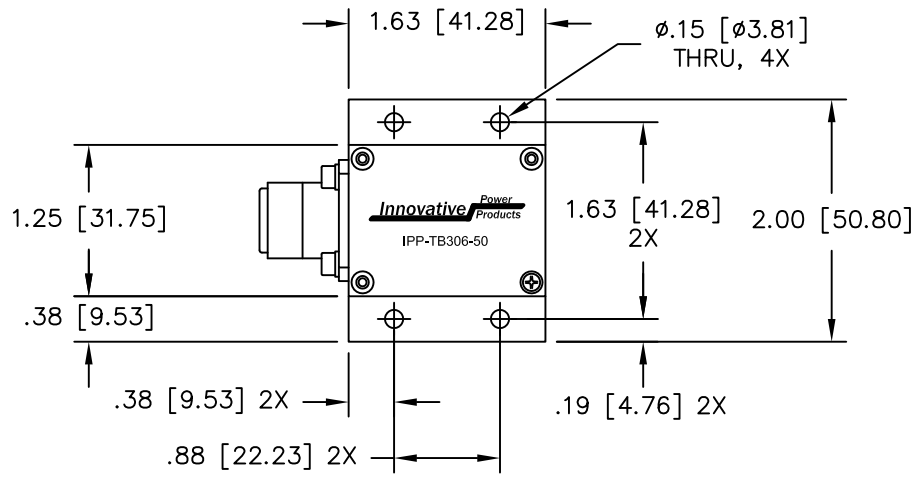
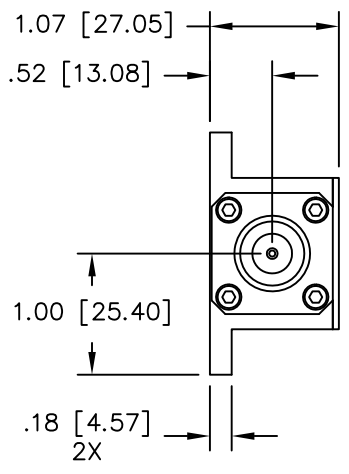


UNAUTHORIZED USE OF THIS  
DRAWING IS STRICTLY PROHIBITED

DAR	REV	DESCRIPTION	APPVD	DATE
3190	A	INITIAL RELEASE	TJD	7-11



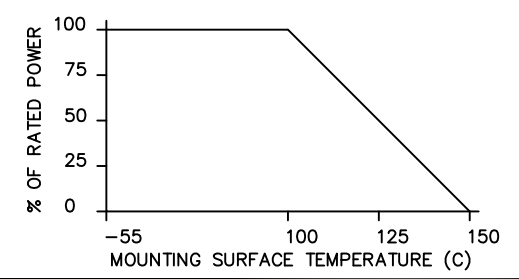
**NOTES**

1. CONNECTOR TYPE "N" FEMALE

**ELECTRICAL SPECIFICATIONS**

INPUT POWER: 500 WATT  
 FREQ: DC - 1.2GHz.  
 VSWR: <1.25:1  
 TEMPERATURE: -55°C TO 80°C

POWER DERATING CURVE



PART NO.	VALUE	TOLERANCE
IPP-TB306-50	50 OHMS	+/- 5%

MATERIAL AL. ALLOY 6061-T651	DWN S.Cornell	DATE 3-24-10		
	ENG DG	DATE 5-10		
FINISH CHEM FILM CLEAR PER MIL-DTL-5541, TYPE 2, REV F, CLASS 3, ROHS COMPLIANT	MANUF	DATE	TITLE TERMINATION, 500 WATT, CONNECTORIZED	
	CAGE CODE: 437R2		SCALE	REV. A
TOLERANCE .XX ±.02 .XXX ±.010 ANG. ±1/2°	SHEET 1 OF 1	SCALE 1:1	SIZE B	P/N IPP-TB306-XXX