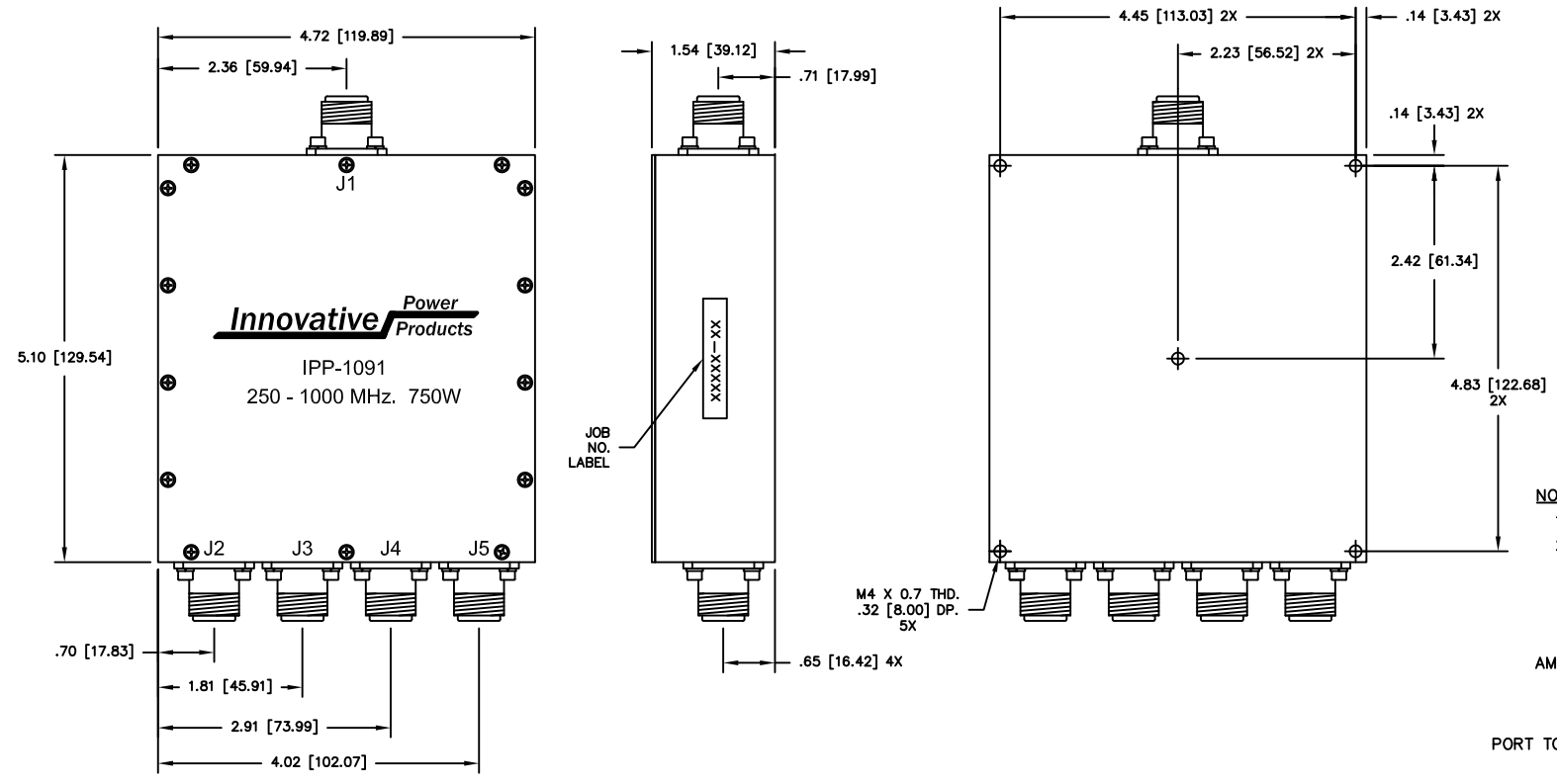


UNAUTHORIZED USE OF THIS  
DRAWING IS STRICTLY PROHIBITED

DAR	REV	DESCRIPTION	APPVD	DATE
3195	E	SEE DAR	TJD	7-11
4177	F	SEE DAR	DG	2-13
7343	G	SEE DAR	DG	10-18



- NOTES:**
- CONNECTORS: J1 - J5 TYPE "N" FEMALE.
  - RoHS COMPLIANT.

**ELECTRICAL SPECIFICATIONS**

FREQUENCY:	250 - 1000 MHz.
INSERTION LOSS:	< 0.80 dB
VSWR:	< 1.30:1
AMPLITUDE BALANCE:	±0.25 dB
PHASE BALANCE:	±5°
IMPEDANCE:	50 OHMS
POWER:	750 WATT
PORT TO PORT ISOLATION:	> 10dB
TEMPERATURE:	-55°C TO 85°C

MATERIAL AL. ALLOY 6061-T651	DWN	DG	DATE	1-10	<b>Innovative Power Products</b>
	ENG	TJD	DATE	1-10	
FINISH CHEM FILM CLEAR PER MIL-DTL-5541, TYPE 2, REV F. CLASS 3 ROHS COMPLIANT	MANUF	DATE		TITLE	
	CAGE CODE: 437R2			OUTLINE	
TOLERANCE .XX ±.02 .XXX ±.010 ANG. ±1/2°	SHEET	OF	SCALE	SIZE P/N	
	1	1	.66:1	B	IPP-1091
					REV. G