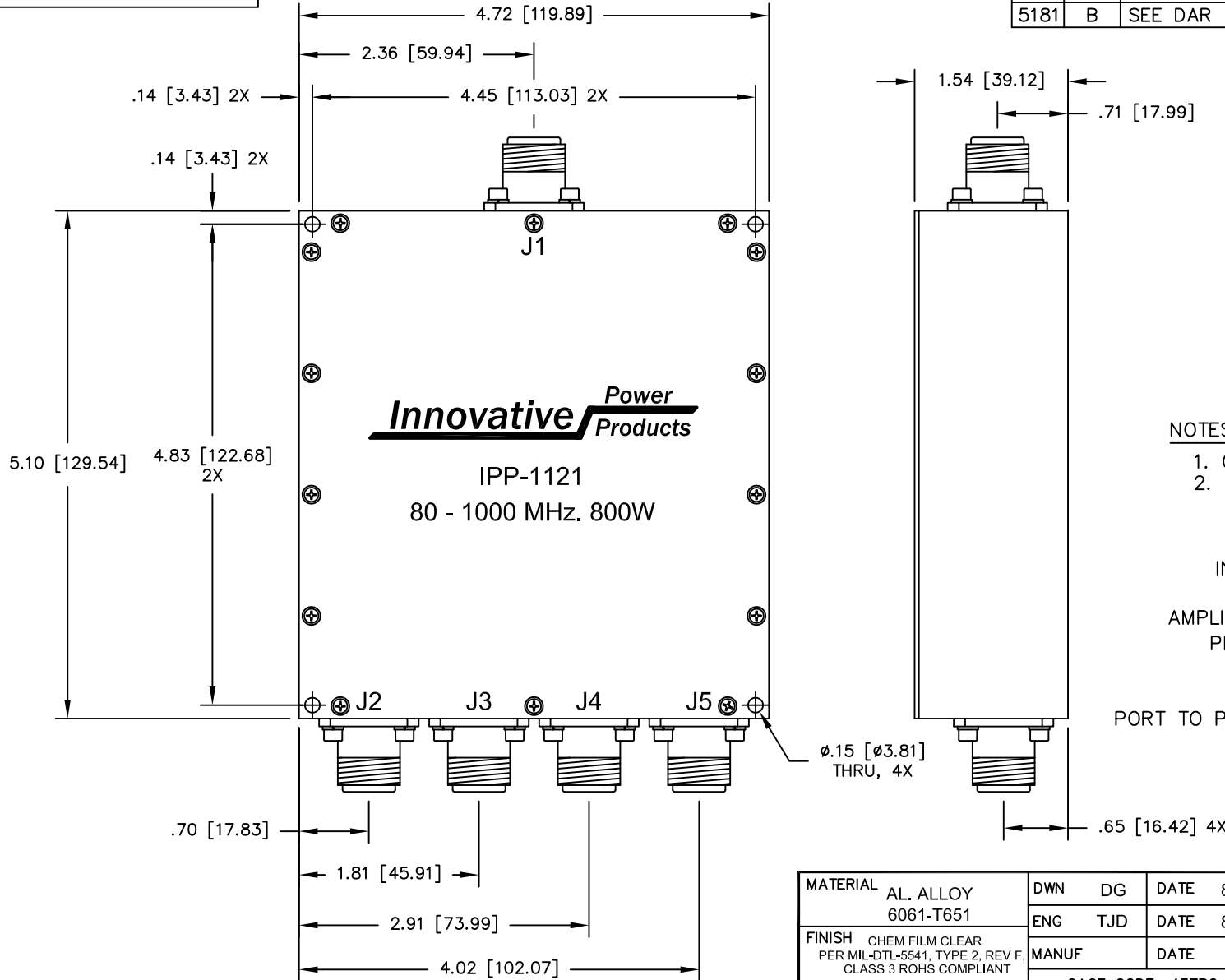


UNAUTHORIZED USE OF THIS
DRAWING IS STRICTLY PROHIBITED

DAR	REV	DESCRIPTION	APPVD	DATE
3210	A	INITIAL RELEASE	TJD	7-11
5181	B	SEE DAR	DG	9-14



NOTES:

- CONNECTORS: J1 - J5 TYPE "N" FEMALE.
- RoHS COMPLIANT.

ELECTRICAL SPECIFICATIONS

FREQUENCY:	80 - 1000 MHz.
INSERTION LOSS:	< 0.65 dB
VSWR:	< 1.30:1
AMPLITUDE BALANCE:	±0.25 dB
PHASE BALANCE:	±5°
IMPEDANCE:	50 OHMS
POWER:	800 WATT
PORT TO PORT ISOLATION:	>10dB
TEMPERATURE:	-55°C TO 85°C

MATERIAL AL. ALLOY 6061-T651	DWN	DG	DATE	8-10	Innovative Power Products
	ENG	TJD	DATE	8-10	
FINISH CHEM FILM CLEAR PER MIL-DTL-5541, TYPE 2, REV F, CLASS 3 ROHS COMPLIANT	MANUF	DATE		TITLE OUTLINE	
	CAGE CODE: 437R2			4 - WAY 80 - 1000 MHz 800 WATT	
TOLERANCE .XX ±.02 .XXX ±.010 ANG. ±1/2°	SHEET	OF	SCALE	1:1	SIZE B
	1	1			P/N IPP-1121
					REV. B