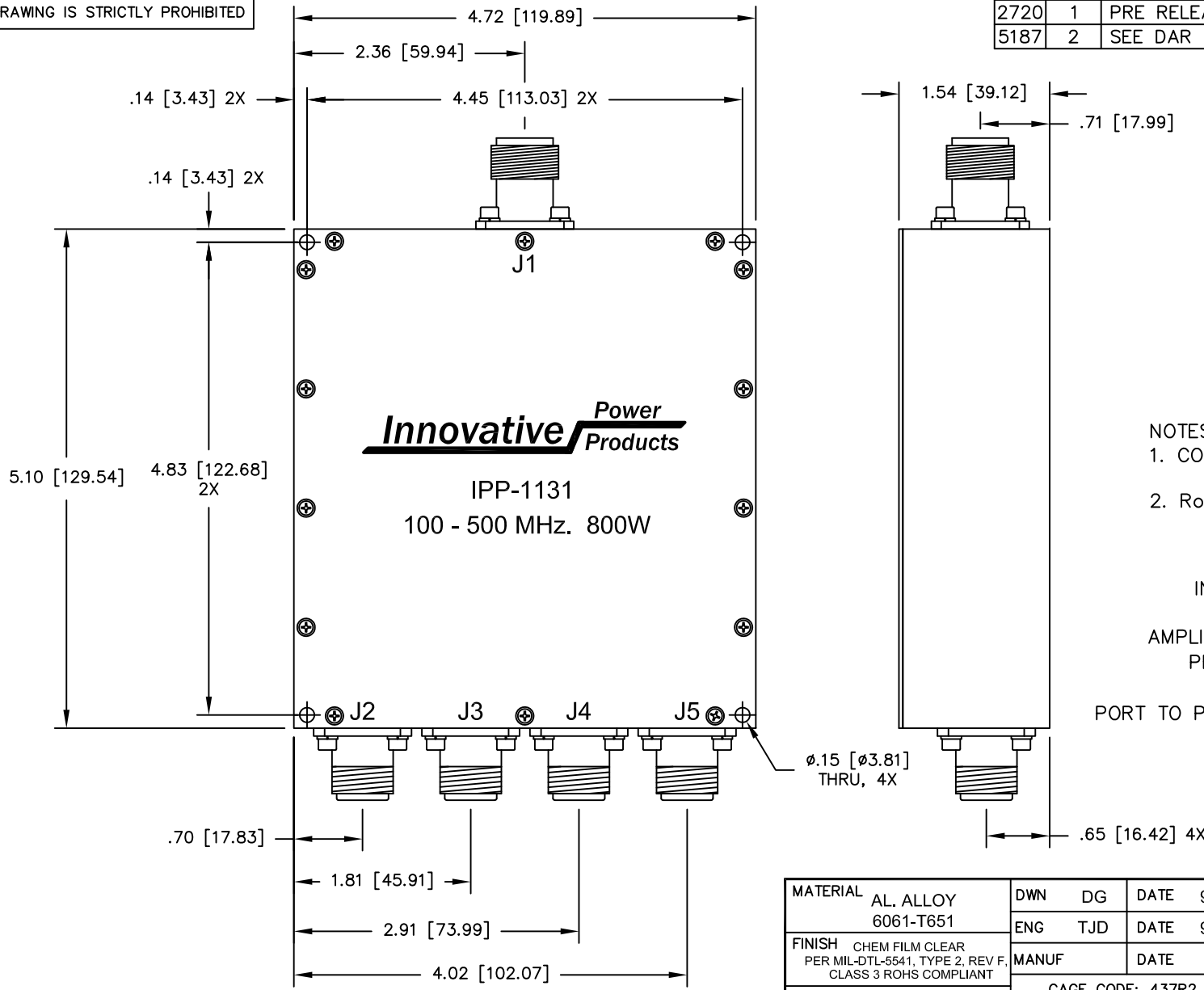


UNAUTHORIZED USE OF THIS  
DRAWING IS STRICTLY PROHIBITED

DAR	REV	DESCRIPTION	APPVD	DATE
2720	1	PRE RELEASE	TJD	9-10
5187	2	SEE DAR	DG	10-14

**PRELIMINARY**  
DIMENSIONS AND SPECIFICATIONS  
ARE SUBJECT TO CHANGE UNTIL  
INITIAL RELEASE OF DRAWING.



**NOTES:**

- CONNECTORS: J1 TYPE "SC" FEMALE  
J2 - J5 TYPE "N" FEMALE
- RoHS COMPLIANT.

**ELECTRICAL SPECIFICATIONS**

FREQUENCY:	100 - 500 MHz.
INSERTION LOSS:	< 0.40 dB
VSWR:	< 1.30:1
AMPLITUDE BALANCE:	<0.25 dB
PHASE BALANCE:	±5°
POWER:	800 WATT
PORT TO PORT ISOLATION:	NON-ISOLATED
TEMPERATURE:	-55°C TO 85°C

MATERIAL AL. ALLOY 6061-T651	DWN	DG	DATE	9-10	<b>Innovative Power Products</b>
	ENG	TJD	DATE	9-10	
FINISH CHEM FILM CLEAR PER MIL-DTL-5541, TYPE 2, REV F, CLASS 3 ROHS COMPLIANT	MANUF	DATE		TITLE	OUTLINE
	CAGE CODE: 437R2			4 - WAY 100 - 500 MHz 800 WATT	
TOLERANCE .XX ±.02 .XXX ±.010 ANG. ±1/2°	SHEET	OF	SCALE	1:1	SIZE B
	1	1			P/N IPP-1131
					REV. 2