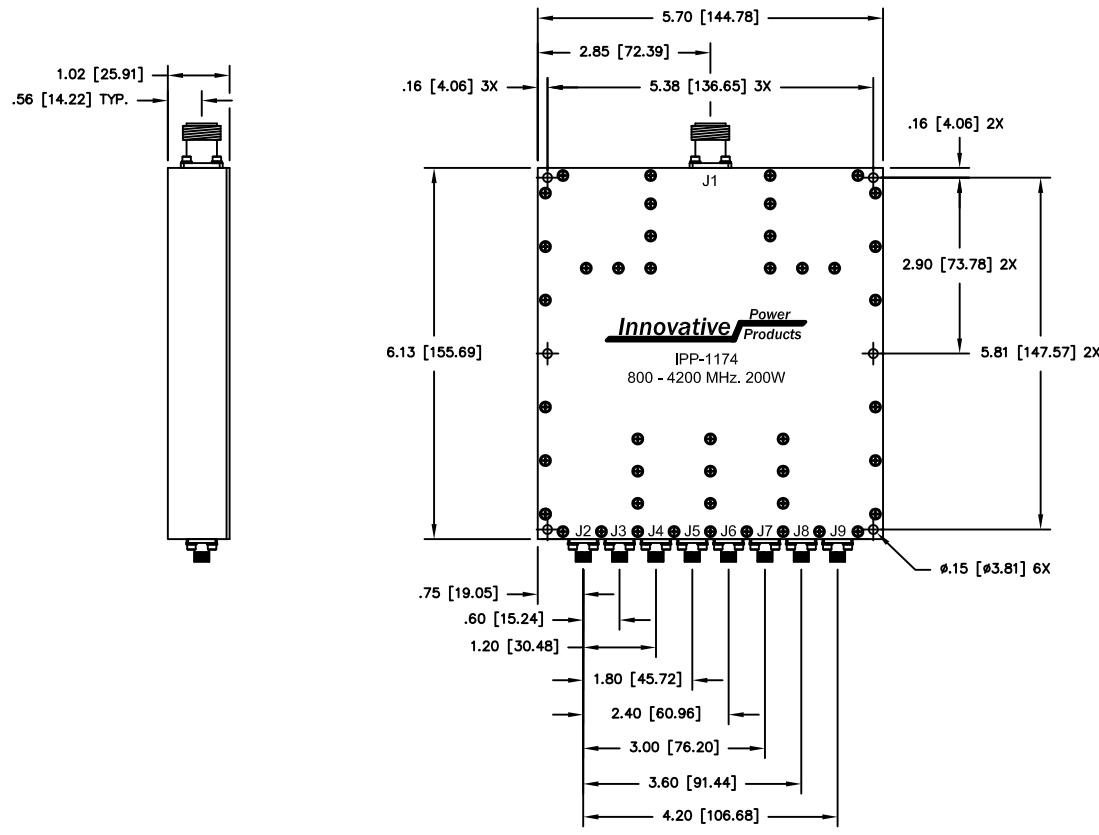


UNAUTHORIZED USE OF THIS  
DRAWING IS STRICTLY PROHIBITED

DAR	REV	DESCRIPTION	APPVD	DATE
3464	A	INITIAL RELEASE	TJD	1-12



**NOTES:**

- CONNECTOR J1: TYPE 'N' FEMALE.  
CONNECTORS J2 - J9: TYPE 'SMA' FEMALE.
- J1: SUM PORT

**ELECTRICAL SPECIFICATIONS**

FREQUENCY:	800 - 4200 MHz.
INSERTION LOSS:	< 1.2 dB
VSWR:	< 1.30:1
AMPLITUDE BALANCE:	±0.25 dB
PHASE BALANCE:	±6°
POWER:	200 WATT
ISOLATION:	>6 dB
TEMPERATURE:	-55°C TO 85°C

MATERIAL AL. ALLOY 6061-T651	DWN DG	DATE 11-11	<b>Innovative Power Products</b>			
	ENG TJD	DATE 11-11				
FINISH ELECTRODEPOSITED NICKEL PER QQ-N-290, .0003 MIN. SEMI-BRIGHT	MANUF	DATE	TITLE OUTLINE			
	CAGE CODE: 437R2		8 - WAY 800 - 4200 MHz 200 WATT			
TOLERANCE IN [MM]	.XX ±.02 [.50] .XXX ±.005 [.127] ANG. ±1/2°	SHEET OF 1 1	SCALE .5:1	SIZE B	P/N IPP-1174	REV. A