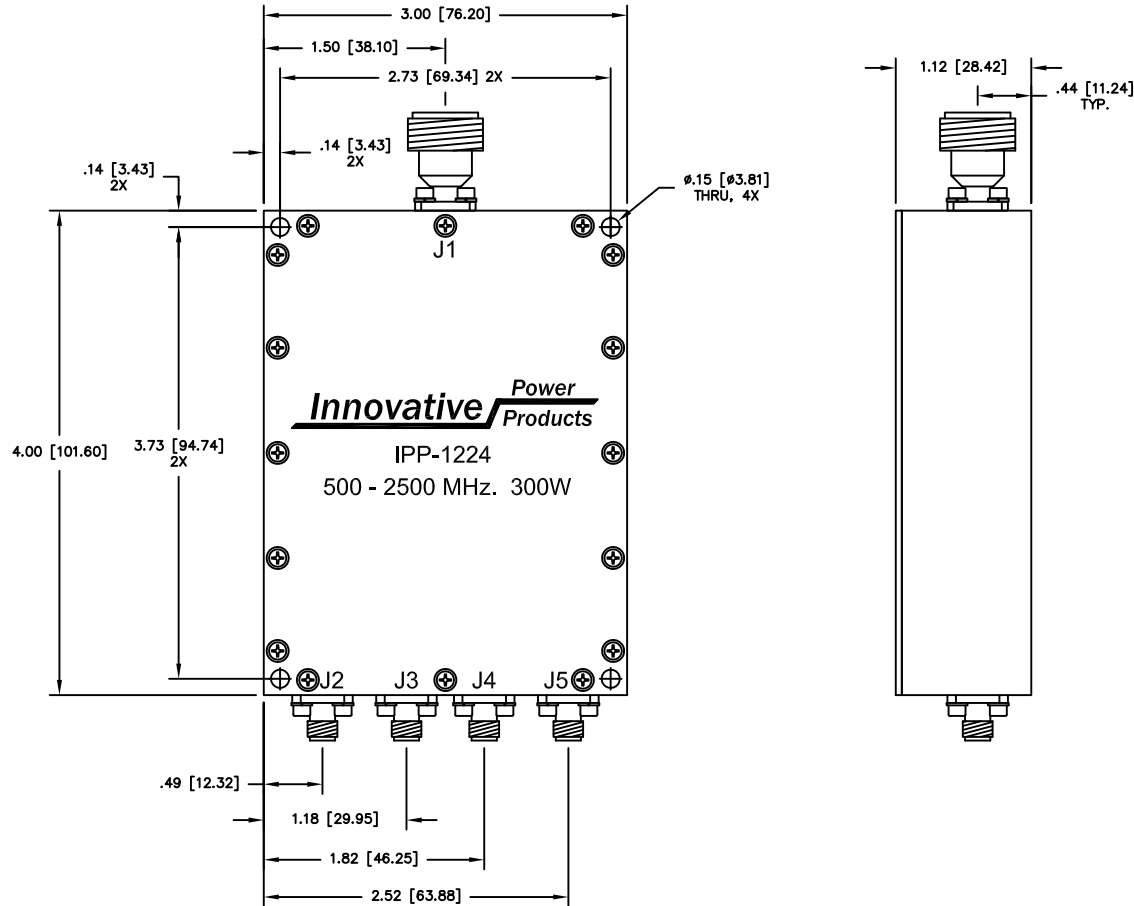


UNAUTHORIZED USE OF THIS
DRAWING IS STRICTLY PROHIBITED

DAR	REV	DESCRIPTION	APPVD	DATE
4037	A	INITIAL RELEASE	DG	11-12
5183	B	SEE DAR	DG	9-14



NOTES:

- CONNECTORS: J1 TYPE "N" FEMALE.
J2 - J5 TYPE "SMA" FEMALE.
- RoHS COMPLIANT.

ELECTRICAL SPECIFICATIONS

FREQUENCY:	500 - 2500 MHz.
INSERTION LOSS:	< 0.80 dB
VSWR:	< 1.30:1
PHASE BALANCE:	±5°
ISOLATION:	>6 dB
AMPLITUDE BALANCE:	±0.25 dB
POWER:	300 WATT
TEMPERATURE:	-55°C TO 85°C

MATERIAL AL. ALLOY 6061-T651	DWN S.Cornell	DATE 11-13-12	Innovative Power Products		
	ENG DG	DATE 11-12			
FINISH ELECTRODEPOSITED NICKEL PER QQ-N-290. .0003 MIN.SEMI-BRIGHT	MANUF	DATE	TITLE OUTLINE		
	CAGE CODE: 437R2		4 - WAY 500 - 2500 MHz 300 WATT		
TOLERANCE .XX ±.02 .XXX ±.010 ANG. ±1/2°	SHEET OF 1 1	SCALE 1:1	SIZE B	P/N IPP-1224	REV. B