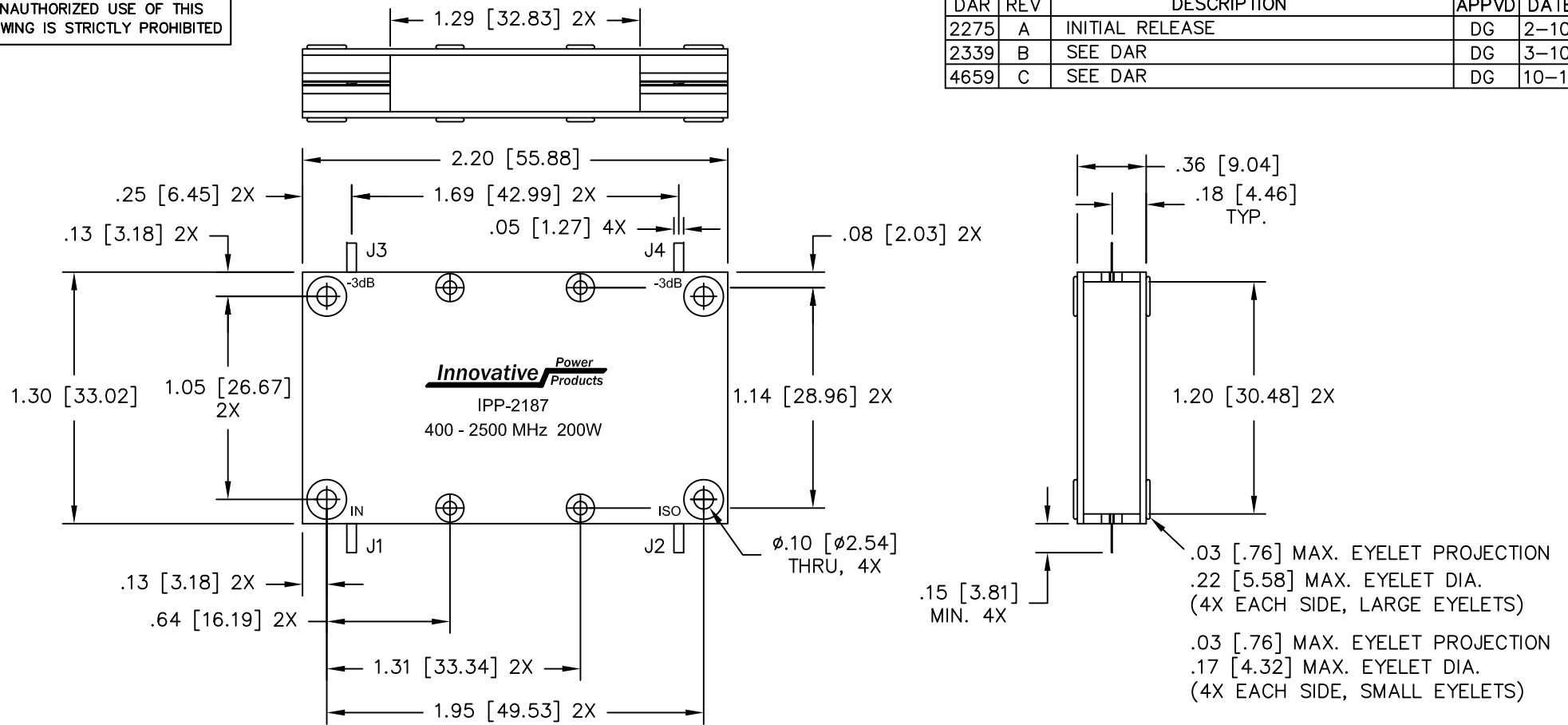


UNAUTHORIZED USE OF THIS
DRAWING IS STRICTLY PROHIBITED

DAR	REV	DESCRIPTION	APPVD	DATE
2275	A	INITIAL RELEASE	DG	2-10
2339	B	SEE DAR	DG	3-10
4659	C	SEE DAR	DG	10-13



ELECTRICAL SPECIFICATIONS

FREQUENCY:	400 - 2500 MHz.
INSERTION LOSS:	< 0.50 dB
VSWR:	< 1.30:1
ISOLATION:	> 17 dB
AMPLITUDE BALANCE:	±0.80 dB
PHASE BALANCE:	±5°
POWER:	200 WATT
TEMPERATURE:	-55°C TO 85°C

NOTES:

- LEAD MATERIAL: 99.99% PURE SILVER .005 [.127] THICK.
- SEE 90° APPLICATION NOTE FOR FURTHER INFORMATION.
- RoHS COMPLIANT.
- DATA AND SPECIFICATIONS APPLY WHEN PART IS MOUNTED IN IPP TEST FIXTURE TF-1123. TEST FIXTURE CONFIGURATION/FOOTPRINT AVAILABLE ON REQUEST.

PORT CONFIGURATION				
INPUT	J1	J2	J3	J4
J1	---	ISOLATION	-3dB<0 DEG	-3dB<-90 DEG
J2	ISOLATION	---	-3dB<-90 DEG	-3dB<0 DEG
J3	-3dB<0 DEG	-3dB<-90 DEG	---	ISOLATION
J4	-3dB<-90 DEG	-3dB<0 DEG	ISOLATION	---

MATERIAL	DWN S.Cornell	DATE 10-14-09	Innovative Power Products	
AL. ALLOY, 6061-T6	ENG TJD	DATE 10-14-09		
FINISH	MANUF RR	DATE 10-14-09	TITLE	
CHEM FILM CLEAR PER MIL-DTL-5541, TYPE 2, REV F, CLASS 3 ROHS COMPLIANT			OUTLINE, COUP., 90°, 400-2500 MHz. 200W	
TOLERANCE	CAGE CODE: 437R2		SIZE	P/N
.XX ±.02 [.50] .XXX ±.005 [.127] ANG. ±1/2°	SHEET 1 OF 1	SCALE 2:1	B	IPP-2187
				REV. C