

CH1 S₁₁ log MAG 10 dB/ REF 0 dB 1: -53.704 dB

IPP-3005 VSWR Main Line

20.000 000 MHz

Cor

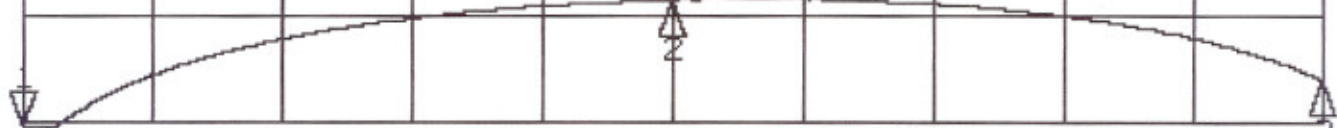
2: -38.395 dB
200 MHz

SCALE

3: -45.982 dB
500 MHz

10 dB/div

↑



START 20.000 000 MHz

STOP 500.000 000 MHz

CH2 S21 log MAG .2 dB/ REF 0 dB 1: -.0116 dB

IPP-3005 Insertion Loss

20.000 000 MHz

CHANGED TO SYSTEM CONTROLLER

2: -.0819 dB
200 MHz

SCALE

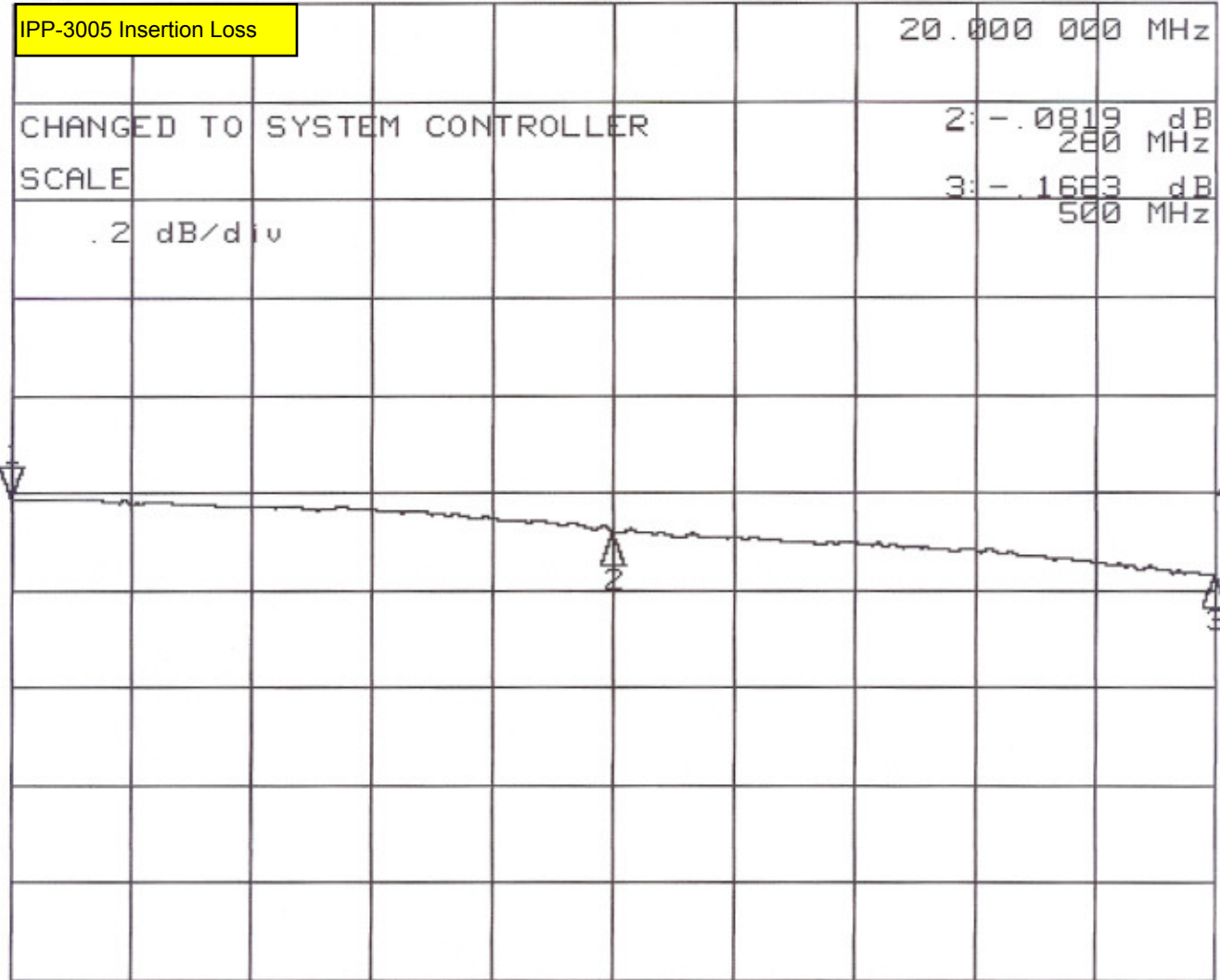
3: -.1683 dB
500 MHz

.2 dB/div

Cor

↑

START 20.000 000 MHz STOP 500.000 000 MHz



CH2 S21 log MAG 1 dB/ REF -50 dB 1: -50.049 dB

IPP-3005 Coupling

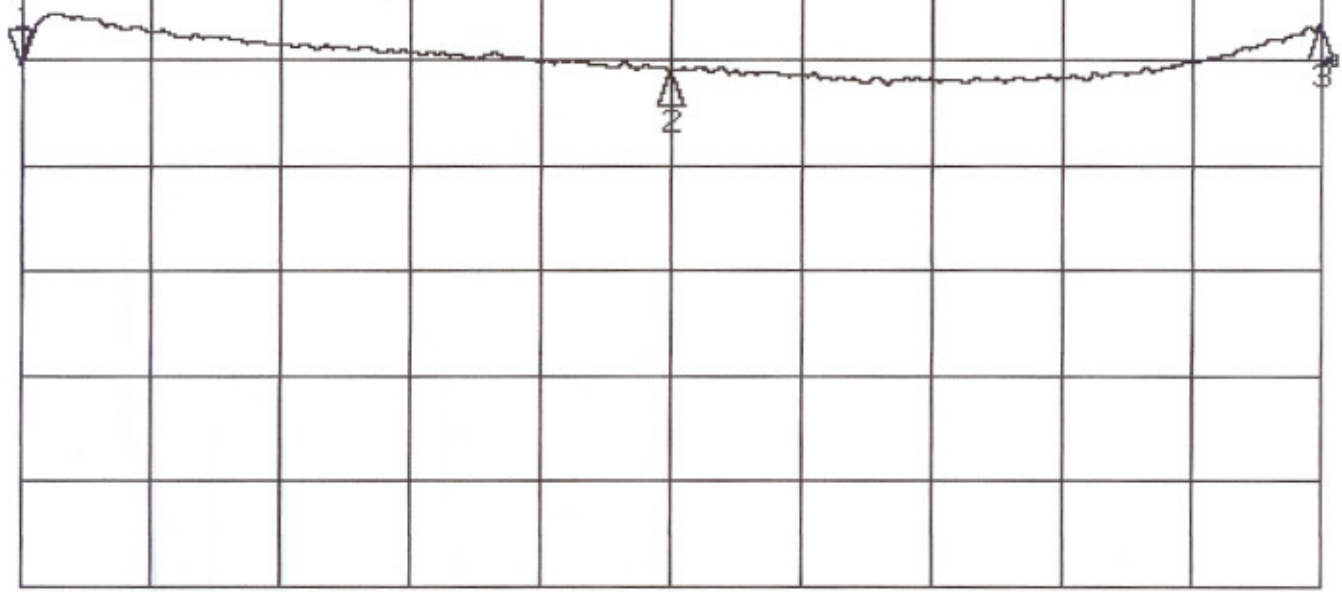
20.000 000 MHz

2: -50.098 dB
200 MHz

SCALE

3: -49.668 dB
500 MHz

1 dB/div



Cor
Avg
16

↑

START 20.000 000 MHz STOP 500.000 000 MHz

CH2 S21 log MAG 10 dB/ REF -50 dB 1: -80.466 dB

IPP-3005 Isolation

20.000 000 MHz

2: -82.457 dB
200 MHz

SCALE

3: -80.012 dB
500 MHz

10 dB/div

Cor

Avg
16

↑

START 20.000 000 MHz STOP 500.000 000 MHz

