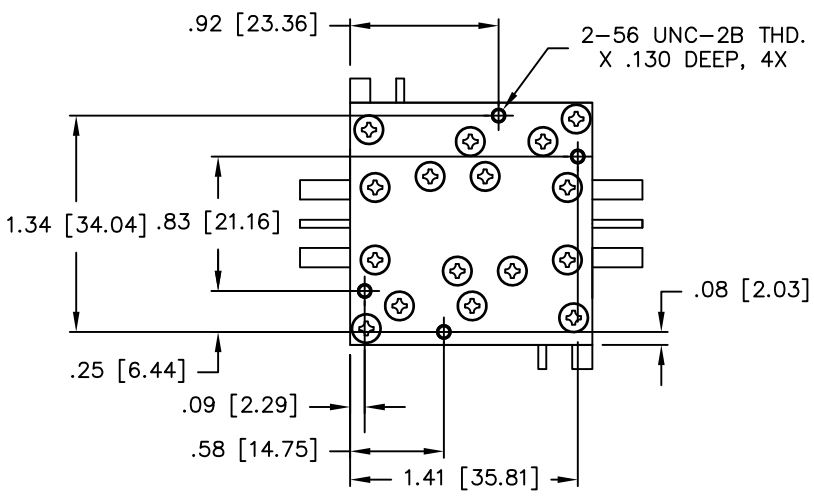
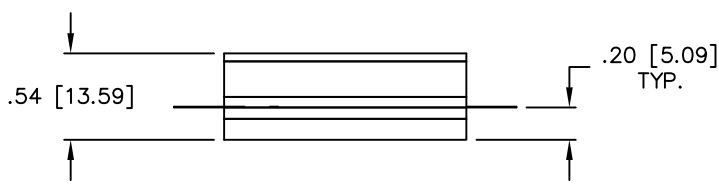
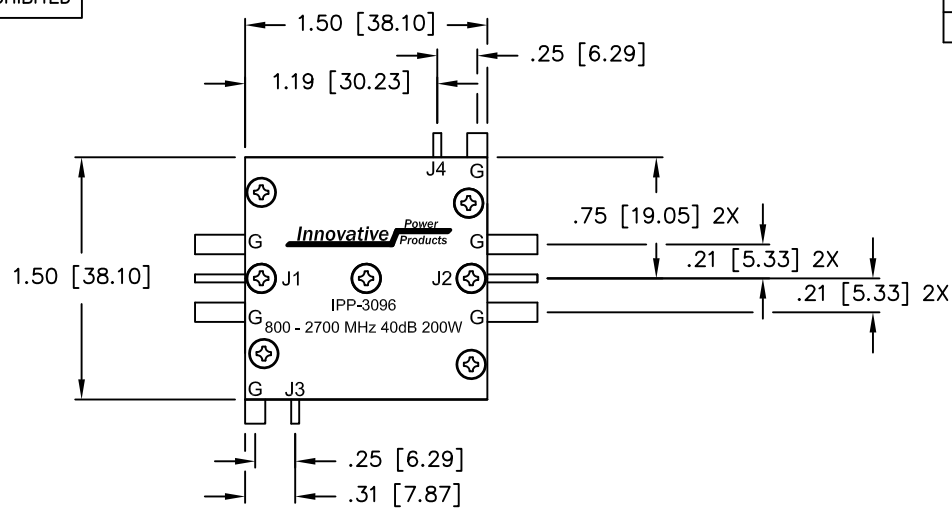


UNAUTHORIZED USE OF THIS  
DRAWING IS STRICTLY PROHIBITED

DAR	REV	DESCRIPTION	APPVD	DATE
2004	A	INITIAL RELEASE	DG	8-09
4510	B	SEE DAR	DG	8-13



**NOTES**

- J1 - J4: 0.050 [1.270] X 0.005 [0.127] SILVER TABS  
GND: 0.120 [3.048] X 0.005 [0.127] SILVER TABS  
ALL TABS 0.15 [3.81] MIN. LONG.

**ELECTRICAL SPECIFICATIONS**

FREQUENCY:	800 - 2700 MHz.
INSERTION LOSS:	<0.25dB
MAIN LINE VSWR:	<1.30:1
COUPLING:	40.0 ±1.0dB
DIRECTIVITY:	> 14dB
COUPLED FLATNESS:	±0.50dB
POWER:	200 WATT
TEMPERATURE:	55°C TO 80°C

- J1: INPUT  
J2: OUTPUT  
J3: -40dB(FWD COUPLED)  
J4: -40dB(REFL COUPLED)

MATERIAL AL. ALLOY 6061-T651	DWN DG	DATE 8-09	
	ENG TJD	DATE 8-09	
FINISH CHEM FILM CLEAR PER MIL-DTL-5541, TYPE 2, REV F, CLASS 3 ROHS COMPLIANT	MANUF RR	DATE 8-09	TITLE DUAL DIRECTIONAL COUPLER 800 - 2700 MHz. 200 WATT, 40 dB
	CAGE CODE: 437R2		P/N IPP-3096
TOLERANCE .XX ±.02 .XXX ±.010 ANG. ±1/2°	SHEET OF 1 1	SCALE 1.33:1	REV. B