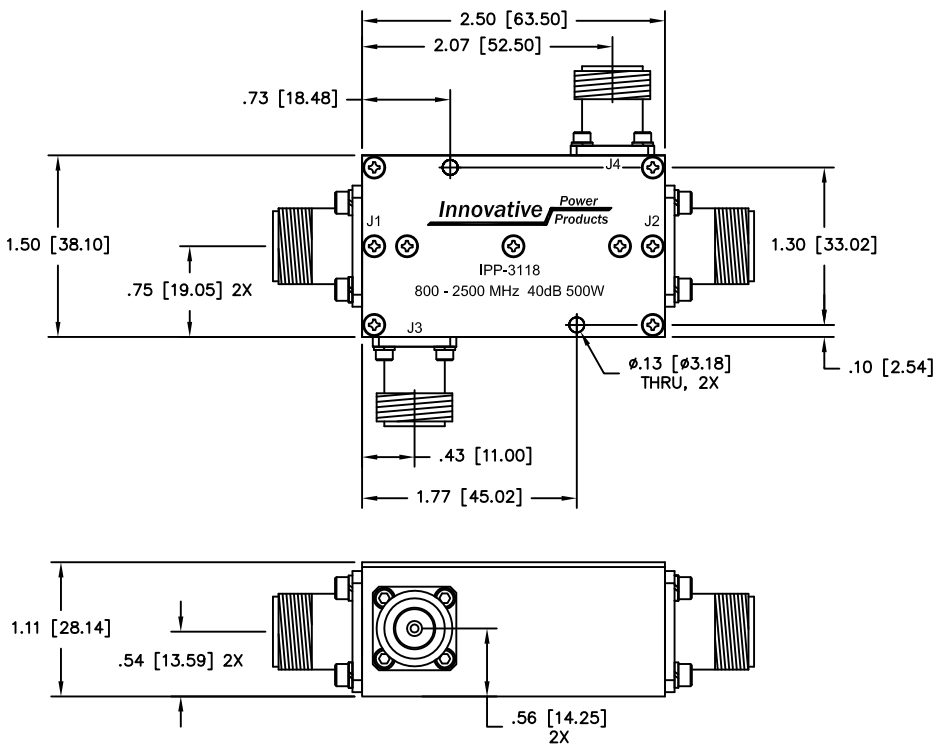


UNAUTHORIZED USE OF THIS
DRAWING IS STRICTLY PROHIBITED

DAR	REV	DESCRIPTION	APPVD	DATE
3016	A	INITIAL RELEASE	DG	3-11
4492	B	SEE DAR	DG	8-13



NOTES

- CONNECTOR TYPE J1 - J4: TYPE "N" FEMALE

ELECTRICAL SPECIFICATIONS

FREQUENCY:	800 - 2500 MHz.
INSERTION LOSS:	<0.30dB
MAIN LINE VSWR:	<1.25:1
COUPLING:	40.0 ±1.0dB
DIRECTIVITY:	>20dB
COUPLED FLATNESS:	±0.50dB
POWER:	500 WATT

- J1: INPUT
- J2: OUTPUT
- J3: -40dB (FWD COUPLED)
- J4: -40dB (REFL. COUPLED)

MATERIAL AL. ALLOY 6061-T651	DWN S.Cornell	DATE 3-10-10		
	ENG DG	DATE 3-11		
FINISH CHEM FILM, CLEAR, PER MIL-DTL-5541, TYPE 2, REV. F, CLASS 3 (ROHS COMPLIANT)	MANUF .	DATE .	TITLE DUAL DIRECTIONAL COUPLER 800 - 2500 MHz. 500 WATT, 40 dB	
	CAGE CODE: 437R2		SIZE B	P/N IPP-3118
TOLERANCE .XX ±.02 .XXX ±.005 ANG. ±1/2°	SHEET OF 1 1	SCALE 1:1		