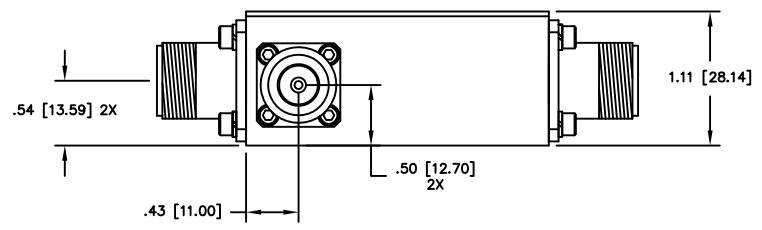
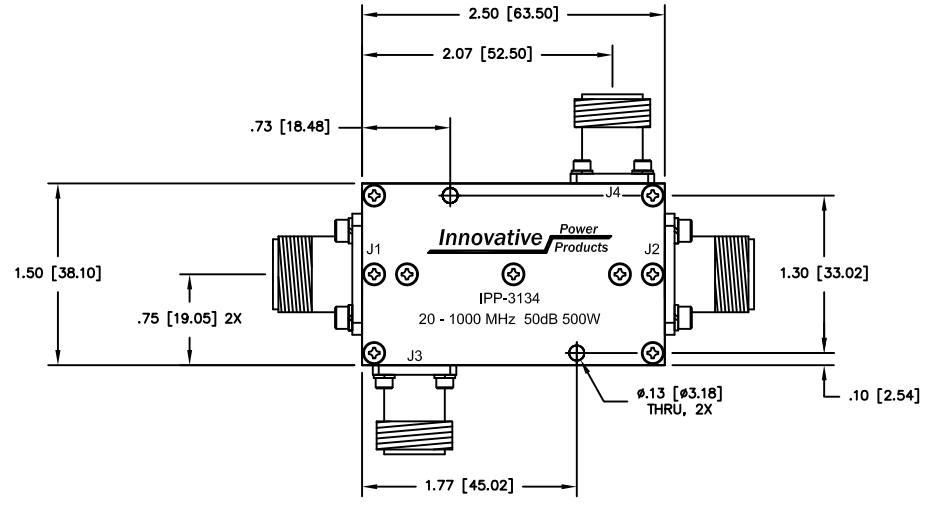


UNAUTHORIZED USE OF THIS
DRAWING IS STRICTLY PROHIBITED

DAR	REV	DESCRIPTION	APPVD	DATE
2753	A	INITIAL RELEASE	DG	11-10
4483	B	SEE DAR	DG	8-13



NOTES

1. CONNECTOR J1 - J4: TYPE "N" FEMALE

ELECTRICAL SPECIFICATIONS

FREQUENCY: 20 - 1000 MHz.
 INSERTION LOSS: <0.35 dB
 MAIN LINE VSWR: <1.25:1
 DIRECTIVITY: >20dB
 COUPLING: 50.0±1.5dB
 COUPLED FLATNESS: ±0.6dB
 POWER: 500 WATT
 TEMPERATURE: -55°C TO 85°C

INPUT	OUTPUT	FORWARD COUPLING	REFLECTED COUPLING
J1	J2	J3	J4
J2	J1	J4	J3

MATERIAL	AL. ALLOY	DWN	DG	DATE	9-10	Innovative Power Products
	6061-T651	ENG	TJD	DATE	9-10	
FINISH	CHEM FILM CLEAR PER MIL-DTL-5541, TYPE 2, REV F, CLASS 3 ROHS COMPLIANT	MANUF	DATE			TITLE
		CAGE CODE: 437R2				
TOLERANCE	.XX ±.02	SHEET	OF	SCALE	1:1	SIZE
	.XXX ±.005					B
	ANG. ±1/2°	1	1			P/N
						IPP-3134
						REV.
						B