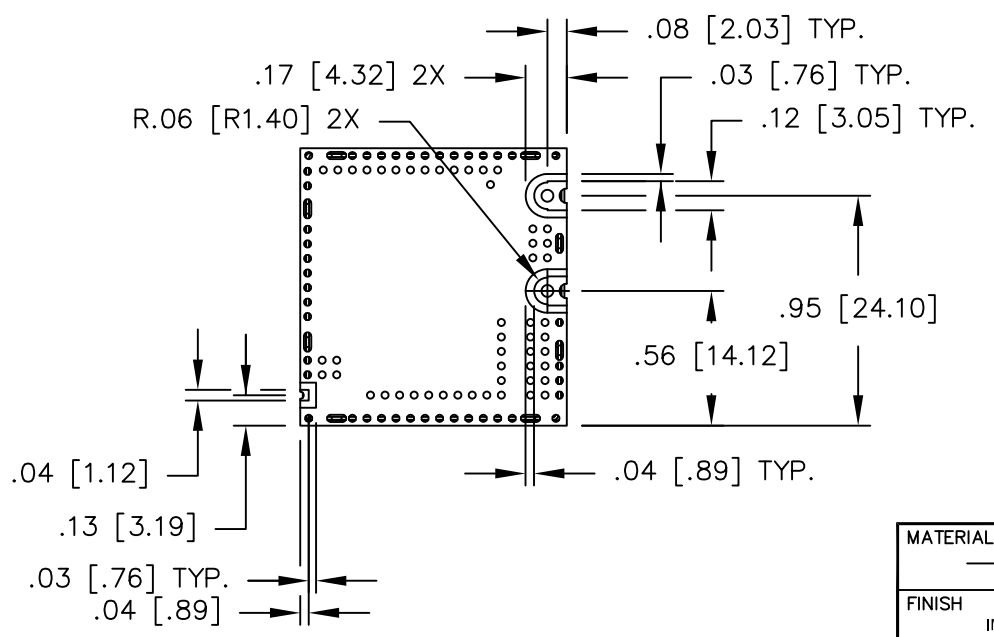
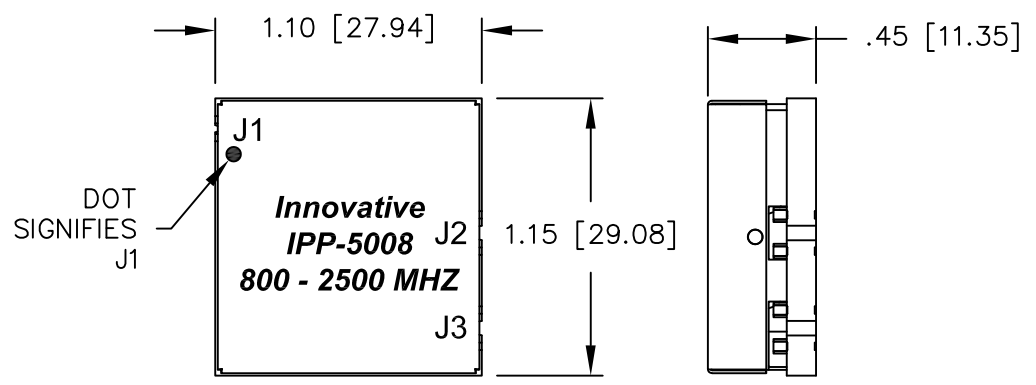


UNAUTHORIZED USE OF THIS
DRAWING IS STRICTLY PROHIBITED

DAR	REV	DESCRIPTION	APPVD	DATE
5444	C	SEE DAR	DG	3-15
5707	D	SEE DAR	DG	7-15
7878	E	SEE DAR	DG	10-19



NOTES:
 1. DO NOT EXCEED 250° C WHEN INSTALLING.
 2. RoHS COMPLIANT.

ELECTRICAL SPECIFICATIONS

FREQUENCY: 800 – 2500 MHz.
 INSERTION LOSS: < 0.45 dB
 VSWR: < 1.35:1
 PHASE BALANCE: 180° ±8°
 AMPLITUDE BALANCE: ±0.40 dB
 POWER: 100 WATT
 IMPEDANCE: J1: 50 OHM
 J2,J3: 25 OHM
 TEMPERATURE: -55°C TO 85°C

MATERIAL	DWN S.Cornell	DATE 5-21-12				
	ENG DG	DATE 5-12				
FINISH IMMERSION TIN	MANUF	DATE	TITLE OUTLINE			
	CAGE CODE: 437R2		2 - WAY BALUN 800 - 2500 MHz 100 WATT			
TOLERANCE .XX ±.02 .XXX ±.010 ANG. ±1/2°	SHEET 1	OF 1	SCALE 2:1	SIZE B	P/N IPP-5008	REV. E