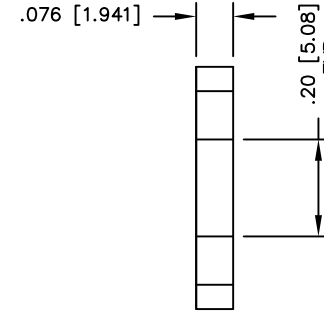
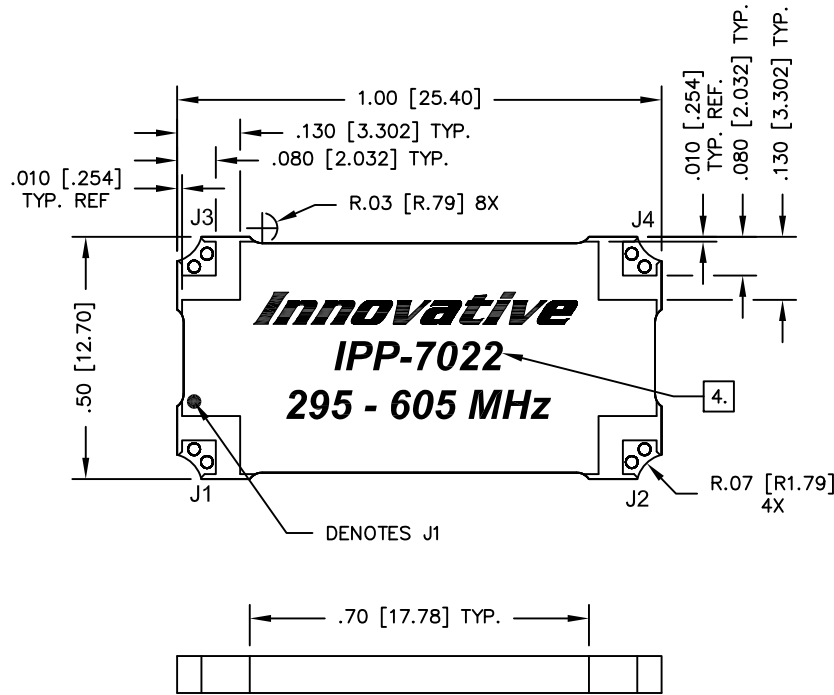


UNAUTHORIZED USE OF THIS  
DRAWING IS STRICTLY PROHIBITED

DAR	REV	DESCRIPTION	APPVD	DATE
4869	E	SEE DAR	DG	3-14
4961	F	SEE DAR	DG	5-14
7125	G	SEE DAR	DG	4-18



FINISH	
P/N	TYPE
IPP-7022	TIN/LEAD
IPP-7022RT	RoHS MATTE TIN
IPP-7022RC	RoHS NICKEL GOLD

**NOTES:**

- SEE SMD COUPLER APPLICATION NOTE FOR FURTHER INFORMATION.
- PARTS WITH RoHS MATTE TIN AND RoHS NICKEL GOLD FINISHES ARE RoHS COMPLIANT.
- AVAILABLE IN TAPE AND REEL. SEE SMD COUPLER APPLICATION NOTE FOR FURTHER INFORMATION.
4. SEE CHART FOR PART NUMBER AND FINISH.

**ELECTRICAL SPECIFICATIONS**

FREQUENCY: 295 - 605 MHz.  
 INSERTION LOSS: < 0.25 dB  
 VSWR: < 1.27:1  
 ISOLATION: > 18 dB  
 AMPLITUDE BALANCE: ±0.65 dB  
 PHASE BALANCE: ±5°  
 POWER: 300 WATT  
 TEMPERATURE: -55°C TO 85°C

PORT CONFIGURATION				
INPUT	A	B	C	D
J1	--	ISOLATION	-3dB<0 DEG	-3dB<-90 DEG
J2	ISOLATION	--	-3dB<-90 DEG	-3dB<0 DEG
J3	-3dB<0 DEG	-3dB<-90 DEG	--	ISOLATION
J4	-3dB<-90 DEG	-3dB<0 DEG	ISOLATION	--

MATERIAL	DWN DG	DATE 8-09			
FINISH	ENG TJD	DATE 8-09			
SEE FINISH CHART	MANUF TP	DATE 8-09	TITLE OUTLINE		
TOLERANCE	CAGE CODE: 437R2		SMD COUPLER, 90°, 295 - 605 MHz 300W		
IN [MM]	SHEET OF 1 1	SCALE 4:1	SIZE B	P/N IPP-7022*	REV. G