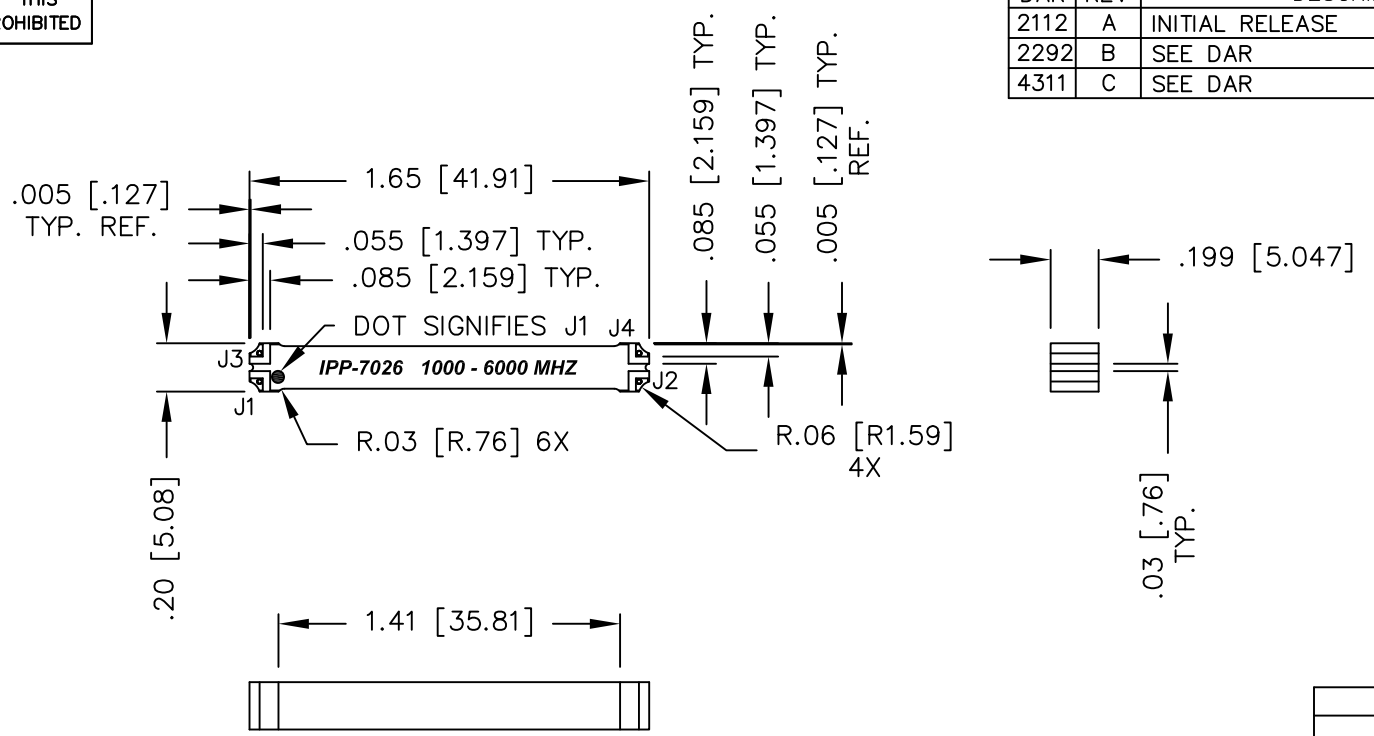


UNAUTHORIZED USE OF THIS
DRAWING IS STRICTLY PROHIBITED

DAR	REV	DESCRIPTION	APPVD	DATE
2112	A	INITIAL RELEASE	DG	10-09
2292	B	SEE DAR	DG	2-10
4311	C	SEE DAR	DG	5-13



- NOTES:**
1. SEE SMD COUPLER APPLICATION NOTE FOR FURTHER INFORMATION.
 2. PARTS WITH RoHS MATT TIN AND RoHS NICKEL GOLD FINISHES ARE RoHS COMPLIANT.
 3. AVAILABLE IN TAPE AND REEL. SEE SMD COUPLER APPLICATION NOTE FOR FURTHER INFORMATION.

FINISH	
P/N	TYPE
IPP-7026	TIN/LEAD
IPP-7026RT	RoHS MATTE TIN
IPP-7026RG	RoHS NICKEL GOLD

ELECTRICAL SPECIFICATIONS

FREQUENCY: 1000 - 6000 MHz.
 INSERTION LOSS: <0.75 dB
 VSWR: <1.40:1
 ISOLATION: >15dB
 AMPLITUDE BALANCE: ±0.80dB
 PHASE BALANCE: ±5°
 POWER: 50 WATT
 TEMPERATURE: -55°C TO 85°C

PORT CONFIGURATION				
INPUT	J1	J2	J3	J4
J1	---	ISOLATION	-3dB<0 DEG	-3dB<-90 DEG
J2	ISOLATION	---	-3dB<-90 DEG	-3dB<0 DEG
J3	-3dB<0 DEG	-3dB<-90 DEG	---	ISOLATION
J4	-3dB<-90 DEG	-3dB<0 DEG	ISOLATION	---

MATERIAL	DWN DG	DATE 10-09	Innovative Power Products		
FINISH	ENG TJD	DATE 10-09			
SEE FINISH CHART	MANUF RR	DATE 10-09	TITLE OUTLINE		
TOLERANCE	CAGE CODE: 437R2		SMD COUPLER, 90°, 1000 - 6000 MHz. 50W		
IN [MM]	SHEET OF 1 1	SCALE 2:1	SIZE B	P/N IPP-7026*	REV. C
.XX ±.02 [.50]					
.XXX ±.010 [.254]					
ANG. ±1/2°					