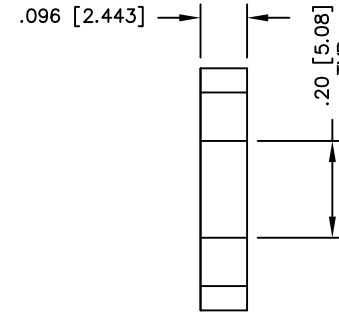
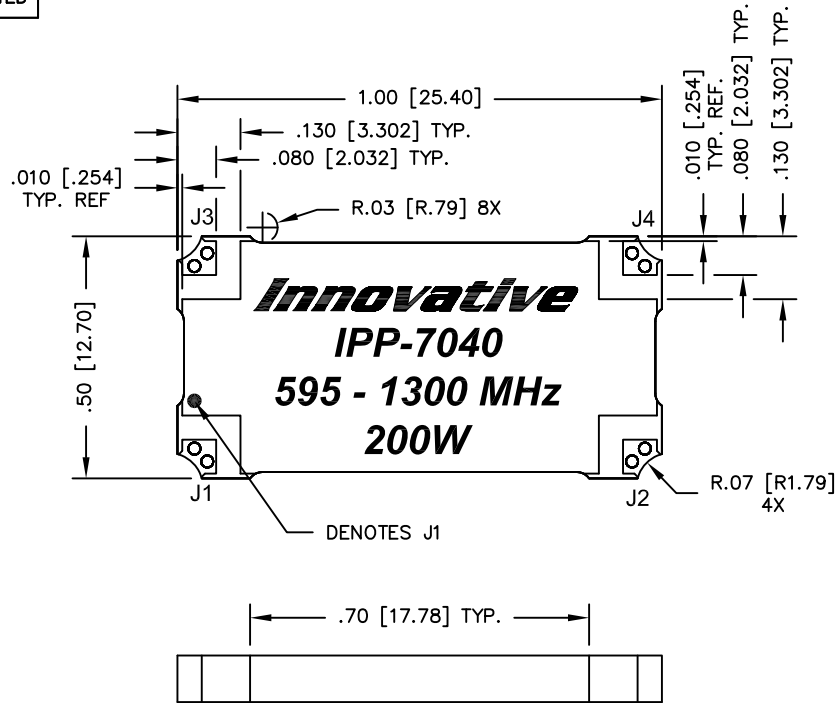


UNAUTHORIZED USE OF THIS
DRAWING IS STRICTLY PROHIBITED

DAR	REV	DESCRIPTION	APPVD	DATE
2259	A	INITIAL RELEASE	TJD	1-10
3829	B	SEE DAR	DG	8-12



FINISH	
P/N	TYPE
IPP-7040	TIN/LEAD
IPP-7040RT	RoHS MATTE TIN
IPP-7040RC	RoHS NICKEL GOLD

NOTES:

1. SEE SMD COUPLER APPLICATION NOTE FOR FURTHER INFORMATION.
2. PARTS WITH RoHS MATTE TIN AND RoHS NICKEL GOLD FINISHES ARE RoHS COMPLIANT.
3. AVAILABLE IN TAPE AND REEL. SEE SMD COUPLER APPLICATION NOTE FOR FURTHER INFORMATION.

ELECTRICAL SPECIFICATIONS

FREQUENCY: 595 - 1300 MHz.
 INSERTION LOSS: < 0.25 dB
 VSWR: < 1.25:1
 ISOLATION: > 18 dB
 AMPLITUDE BALANCE: ±0.65 dB
 PHASE BALANCE: ±5°
 POWER: 200 WATT
 TEMPERATURE: -55°C TO 85°C

PORT CONFIGURATION				
INPUT	A	B	C	D
J1	--	ISOLATION	-3dB<0 DEG	-3dB<-90 DEG
J2	ISOLATION	--	-3dB<-90 DEG	-3dB<0 DEG
J3	-3dB<0 DEG	-3dB<-90 DEG	--	ISOLATION
J4	-3dB<-90 DEG	-3dB<0 DEG	ISOLATION	--

MATERIAL	DWN DG	DATE 12-09			
FINISH SEE FINISH CHART	ENG TJD	DATE 12-09			
TOLERANCE	CAGE CODE: 437R2		TITLE OUTLINE SMD COUPLER, 90°, 595 - 1300 MHz 200W		
IN [MM]	SHEET OF 1 1	SCALE 4:1	SIZE B	P/N IPP-7040*	REV. B