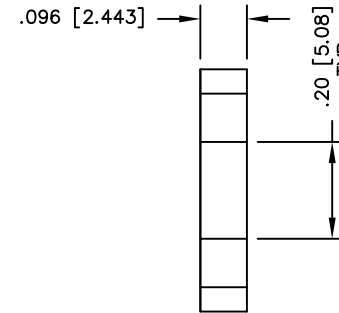
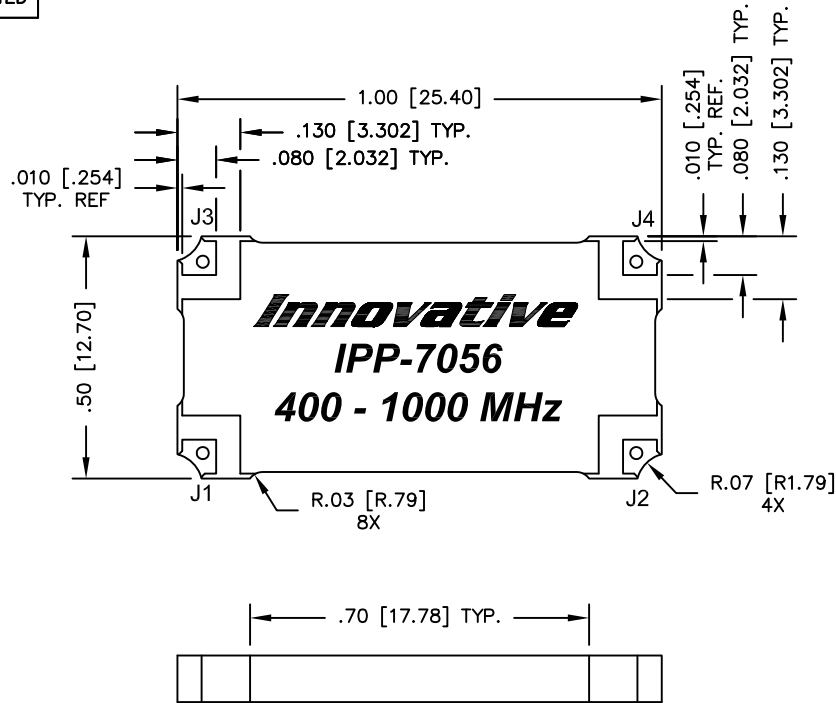


UNAUTHORIZED USE OF THIS
DRAWING IS STRICTLY PROHIBITED

| DAR | REV | DESCRIPTION | APPVD | DATE |
|------|-----|-----------------|-------|------|
| 3016 | A | INITIAL RELEASE | DG | 3-11 |
| 3224 | B | SEE DAR | DG | 8-11 |
| 3838 | C | SEE DAR | DG | 8-11 |



| FINISH | |
|------------|------------------|
| P/N | TYPE |
| IPP-7056 | TIN/LEAD |
| IPP-7056RT | RoHS MATTE TIN |
| IPP-7056RC | RoHS NICKEL GOLD |

NOTES:

1. SEE SMD COUPLER APPLICATION NOTE FOR FURTHER INFORMATION.
2. PARTS WITH RoHS MATTE TIN AND RoHS NICKEL GOLD FINISHES ARE RoHS COMPLIANT.
3. AVAILABLE IN TAPE AND REEL. SEE SMD COUPLER APPLICATION NOTE FOR FURTHER INFORMATION.

ELECTRICAL SPECIFICATIONS

FREQUENCY: 400 - 1000 MHz.
 INSERTION LOSS: < 0.25 dB
 VSWR: < 1.25:1
 ISOLATION: > 18 dB
 AMPLITUDE BALANCE: ±0.65 dB
 PHASE BALANCE: ±5°
 POWER: 150 WATT
 TEMPERATURE: -55°C TO 85°C

| PORT CONFIGURATION | | | | |
|--------------------|--------------|--------------|--------------|--------------|
| INPUT | A | B | C | D |
| J1 | -- | ISOLATION | -3dB<0 DEG | -3dB<-90 DEG |
| J2 | ISOLATION | -- | -3dB<-90 DEG | -3dB<0 DEG |
| J3 | -3dB<0 DEG | -3dB<-90 DEG | -- | ISOLATION |
| J4 | -3dB<-90 DEG | -3dB<0 DEG | ISOLATION | -- |

| | | | | | |
|----------------------------|---|--------------|---------------------------------------|--------|---------------|
| MATERIAL | DWN S.Cornell | DATE 4-27-10 | | | |
| | ENG DG | DATE 4-10 | | | |
| FINISH SEE FINISH CHART | MANUF | DATE | TITLE OUTLINE | | |
| | CAGE CODE: 437R2 | | SMD COUPLER, 90°, 400 - 1000 MHz 150W | | |
| TOLERANCE | SHEET OF 1 1 | | SCALE 4:1 | SIZE B | P/N IPP-7056* |
| IN [MM] | .XX ±.02 [.50] .XXX ±.010 [.254] ANG. ±1/2° | | | | REV. C |