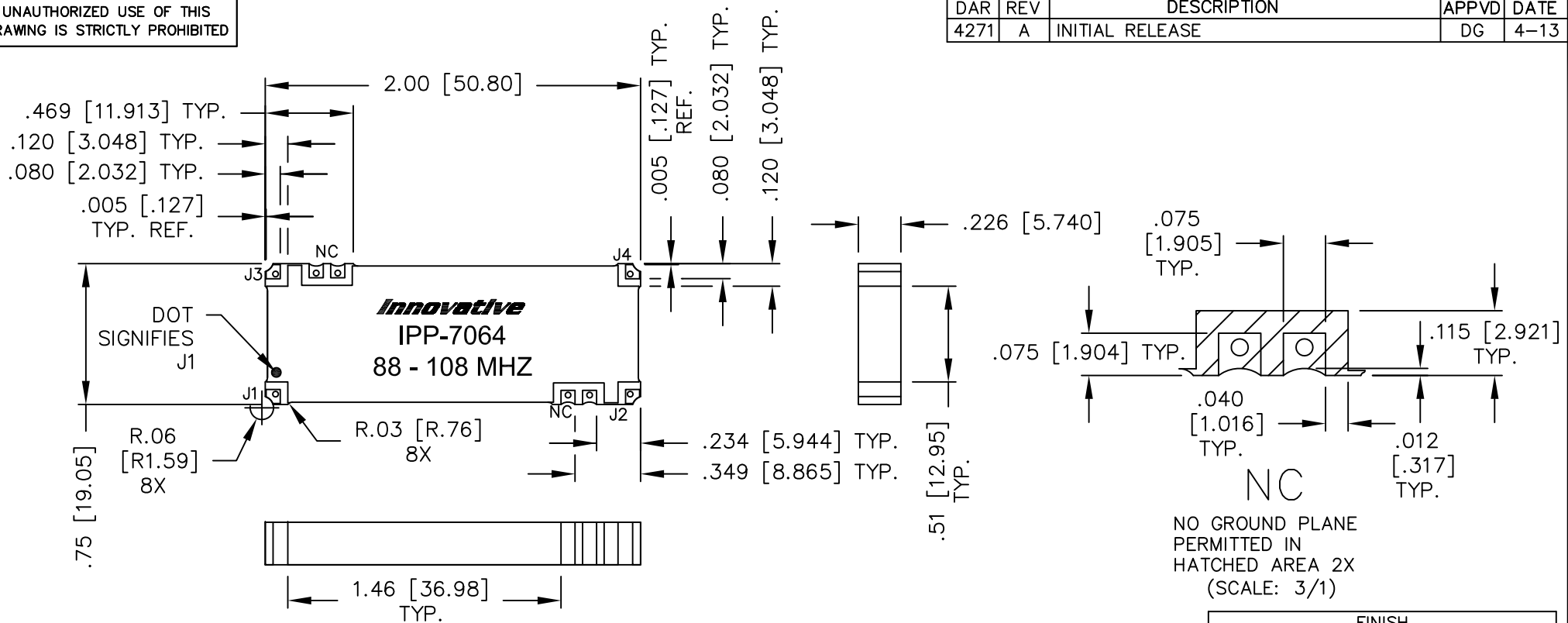


UNAUTHORIZED USE OF THIS
DRAWING IS STRICTLY PROHIBITED

DAR	REV	DESCRIPTION	APPVD	DATE
4271	A	INITIAL RELEASE	DG	4-13



NO GROUND PLANE
PERMITTED IN
HATCHED AREA 2X
(SCALE: 3/1)

NOTES:

1. SEE SMD COUPLER APPLICATION NOTE FOR FURTHER INFORMATION.
2. PARTS WITH RoHS MATTE TIN AND RoHS NICKEL GOLD FINISHES ARE RoHS COMPLIANT.
3. AVAILABLE IN TAPE AND REEL. SEE SMD COUPLER APPLICATION NOTE FOR FURTHER INFORMATION.

ELECTRICAL SPECIFICATIONS

FREQUENCY: 88 - 108 MHz.
 INSERTION LOSS: <0.45 dB
 VSWR: <1.30:1
 ISOLATION: >17dB
 AMPLITUDE BALANCE: ±0.35dB
 PHASE BALANCE: ±5°
 POWER: 200 WATT
 TEMPERATURE: -55°C TO 85°C

FINISH	
P/N	TYPE
IPP-7064	TIN/LEAD
IPP-7064RT	RoHS MATTE TIN
IPP-7064RG	RoHS NICKEL GOLD

PORT CONFIGURATION				
INPUT	J1	J2	J3	J4
J1	---	ISOLATION	-3dB<0 DEG	-3dB<-90 DEG
J2	ISOLATION	---	-3dB<-90 DEG	-3dB<0 DEG
J3	-3dB<0 DEG	-3dB<-90 DEG	---	ISOLATION
J4	-3dB<-90 DEG	-3dB<0 DEG	ISOLATION	---

MATERIAL	DWN DG	DATE 10-10	Innovative Power Products	
FINISH SEE CHART	ENG TJD	DATE 10-10		
TOLERANCE	MANUF	DATE	TITLE OUTLINE	
IN [MM]	CAGE CODE: 437R2		SMD COUPLER, 90°, 88 - 108 MHz. 200W	
.XX ±.02 [.50]	SHEET OF	SCALE	SIZE	P/N
.XXX ±.010 [.254]	1 1	2:1	B	IPP-7064*
ANG. ±1/2°				REV. A