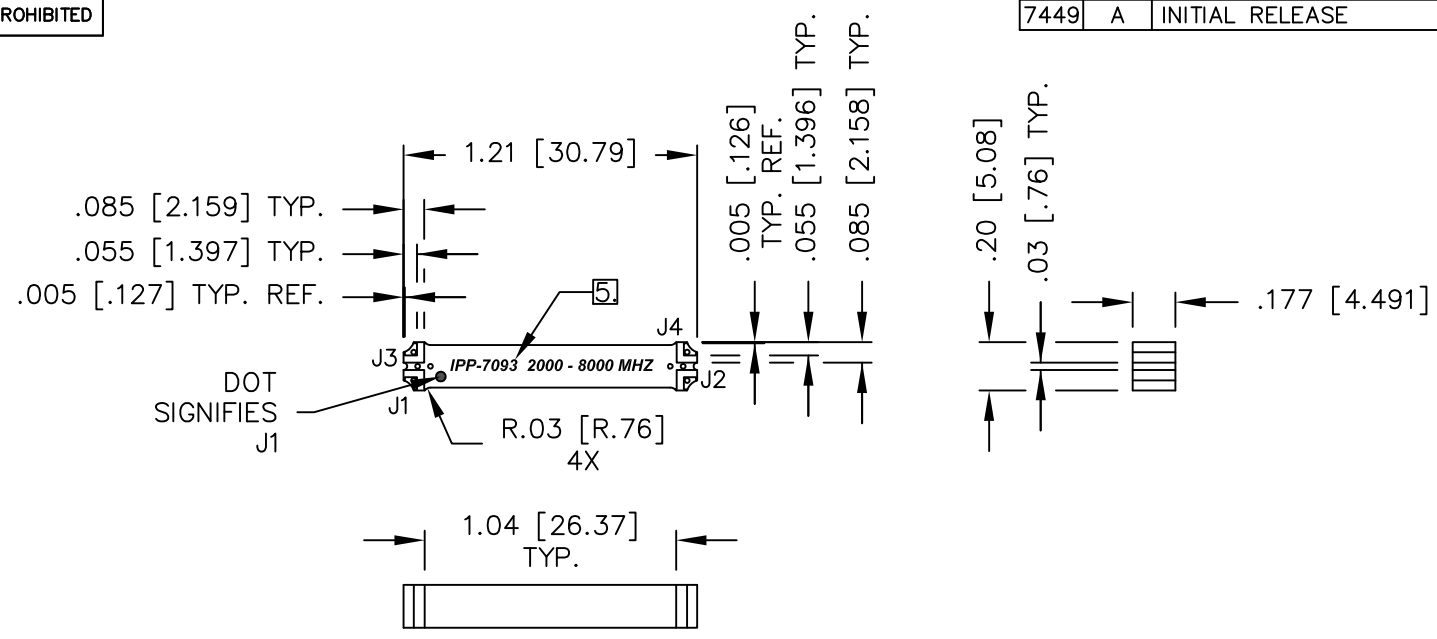


UNAUTHORIZED USE OF THIS  
DRAWING IS STRICTLY PROHIBITED

DAR	REV	DESCRIPTION	APPVD	DATE
7449	A	INITIAL RELEASE	DG	1-19



- NOTES:**
- SEE SMD COUPLER APPLICATION NOTE FOR FURTHER INFORMATION.
  - PARTS WITH RoHS MATTE TIN ARE RoHS COMPLIANT.
  - AVAILABLE IN TAPE AND REEL. SEE SMD COUPLER APPLICATION NOTE FOR FURTHER INFORMATION.
  - DATA AND SPECIFICATIONS APPLY WHEN PART IS MOUNTED IN IPP TEST FIXTURE TF-1308. TEST FIXTURE CONFIGURATION/FOOTPRINT AVAILABLE UPON REQUEST.
  - SEE CHART FOR PART NUMBER AND FINISH.

FINISH	
P/N	TYPE
IPP-7093	TIN/LEAD
IPP-7093RT	RoHS MATTE TIN

**ELECTRICAL SPECIFICATIONS**

FREQUENCY: 2000 - 8000 MHz.  
 INSERTION LOSS: <0.80 dB  
 VSWR: <1.40:1  
 ISOLATION: >15dB  
 AMPLITUDE BALANCE: ±0.65dB  
 PHASE BALANCE: ±8°  
 POWER: 50 WATT  
 TEMPERATURE: -55°C TO 85°C

PORT CONFIGURATION				
INPUT	J1	J2	J3	J4
J1	---	ISOLATION	-3dB<0 DEG	-3dB<-90 DEG
J2	ISOLATION	---	-3dB<-90 DEG	-3dB<0 DEG
J3	-3dB<0 DEG	-3dB<-90 DEG	---	ISOLATION
J4	-3dB<-90 DEG	-3dB<0 DEG	ISOLATION	---

MATERIAL	DWN DG	DATE 10-11	<b>Innovative Power Products</b>		
FINISH SEE FINISH CHART	ENG TJD	DATE 10-11			
TOLERANCE	CAGE CODE: 437R2		TITLE OUTLINE		
IN [MM]	SHEET 1	OF 1	SCALE 2:1	SMD COUPLER, 90°, 2000 - 8000 MHz. 50W	
.XX ±.02 [.50] .XXX ±.010 [.254] ANG. ±1/2°	SIZE B		P/N	IPP-7093*	REV. A