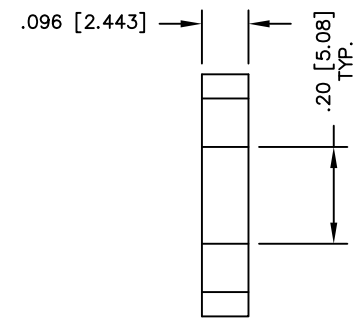
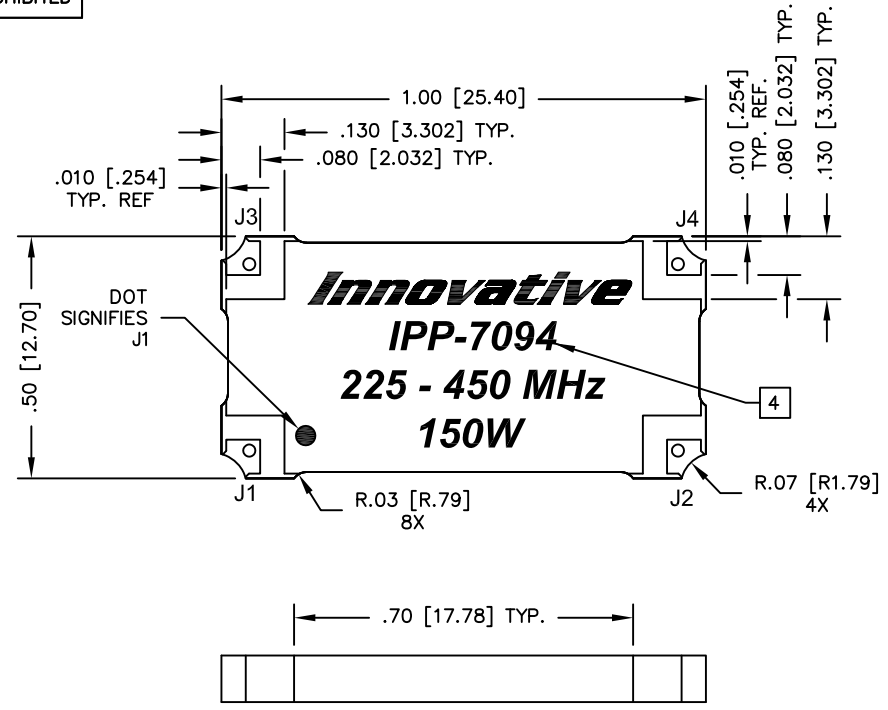


UNAUTHORIZED USE OF THIS
DRAWING IS STRICTLY PROHIBITED

DAR	REV	DESCRIPTION	APPVD	DATE
3839	B	SEE DAR	DG	8-12
6734	C	SEE DAR	TJD	6-17
6992	D	SEE DAR	DG	12-17



FINISH	
P/N	TYPE
IPP-7094	TIN/LEAD
IPP-7094RT	RoHS MATTE TIN
IPP-7094RC	RoHS NICKEL GOLD

NOTES:

1. SEE SMD COUPLER APPLICATION NOTE FOR FURTHER INFORMATION.
2. PARTS WITH RoHS MATTE TIN AND RoHS NICKEL GOLD FINISHES ARE RoHS COMPLIANT.
3. AVAILABLE IN TAPE AND REEL. SEE SMD COUPLER APPLICATION NOTE FOR FURTHER INFORMATION.
4. SEE CHART FOR PART NUMBER AND FINISH.

PORT CONFIGURATION				
INPUT	J1	J2	J3	J4
J1	--	ISOLATION	-3dB<0 DEG	-3dB<-90 DEG
J2	ISOLATION	--	-3dB<-90 DEG	-3dB<0 DEG
J3	-3dB<0 DEG	-3dB<-90 DEG	--	ISOLATION
J4	-3dB<-90 DEG	-3dB<0 DEG	ISOLATION	--

ELECTRICAL SPECIFICATIONS

FREQUENCY: 225 - 450 MHz.
 INSERTION LOSS: < 0.25 dB
 VSWR: < 1.25:1
 ISOLATION: > 18 dB
 AMPLITUDE BALANCE: ±0.45 dB
 PHASE BALANCE: ±5°
 POWER: 150 WATT
 TEMPERATURE: -55°C TO 85°C

MATERIAL	DWN	DG	DATE	11-11	
	ENG	TJD	DATE	11-11	
FINISH SEE FINISH CHART	MANUF	DATE	TITLE OUTLINE SMD COUPLER, 90°, 225 - 450 MHz 150W		
	CAGE CODE: 437R2		SIZE	P/N	
TOLERANCE	SHEET OF		SCALE		
IN [MM]	1	1	4:1	B	D
.XX ±.02 [.50] .XXX ±.010 [.254] ANG. ±1/2°				IPP-7094*	