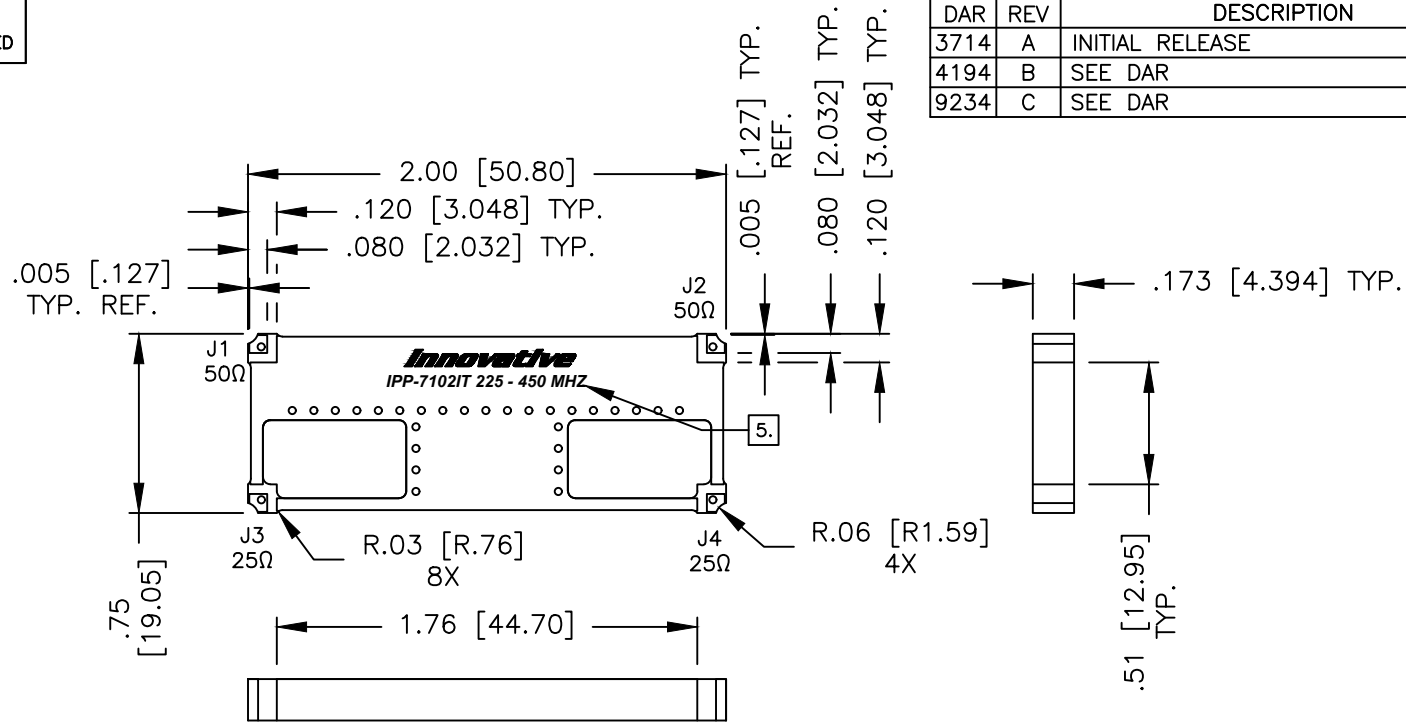


UNAUTHORIZED USE OF THIS
DRAWING IS STRICTLY PROHIBITED

| DAR | REV | DESCRIPTION | APPVD | DATE |
|------|-----|-----------------|-------|------|
| 3714 | A | INITIAL RELEASE | DG | 6-12 |
| 4194 | B | SEE DAR | DG | 3-13 |
| 9234 | C | SEE DAR | DG | 3-23 |



NOTES:

- PATENTED DESIGN: US PATENT #8174338.
- SEE SMD COUPLER APPLICATION NOTE FOR FURTHER INFORMATION.
- PARTS WITH RoHS MATTE TIN FINISH ARE RoHS AND REACH COMPLIANT.
- AVAILABLE IN TAPE AND REEL. SEE SMD COUPLER APPLICATION NOTE FOR FURTHER INFORMATION.
- SEE CHART FOR PART NUMBER AND FINISH.
- DATA AND SPECIFICATIONS APPLY WHEN PART IS MOUNTED IN IPP TEST FIXTURE. TEST FIXTURE CONFIGURATION/FOOTPRINT AVAILABLE UPON REQUEST.
- DO NOT EXCEED 220°C WHEN INSTALLING COUPLER.

| FINISH | | |
|--------------|-----------|--------------|
| P/N | TYPE | COMPLIANCE |
| IPP-7102IT | TIN/LEAD | --- |
| IPP-7102ITRT | MATTE TIN | RoHS & REACH |

PORT CONFIGURATION

| INPUT | J1 50Ω | J2 50Ω | J3 25Ω | J4 25Ω |
|--------|--------------|--------------|--------------|--------------|
| J1 50Ω | --- | ISOLATION | -3dB<0 DEG | -3dB<-90 DEG |
| J2 50Ω | ISOLATION | --- | -3dB<-90 DEG | -3dB<0 DEG |
| J3 25Ω | -3dB<0 DEG | -3dB<-90 DEG | --- | ISOLATION |
| J4 25Ω | -3dB<-90 DEG | -3dB<0 DEG | ISOLATION | --- |

ELECTRICAL SPECIFICATIONS

| | |
|--------------------|----------------|
| FREQUENCY: | 225 - 400 MHz. |
| INSERTION LOSS: | 0.45 dB |
| VSWR: | <1.25:1 |
| ISOLATION: | >15 dB |
| AMPLITUDE BALANCE: | ±0.6 dB |
| PHASE BALANCE: | ±5° |
| POWER: | 100 WATT |
| TEMPERATURE: | -55°C TO 85°C |

| | | | |
|---|------------------|-------------|--|
| MATERIAL | DWN S.Cornell | DATE 6-7-12 | |
| FINISH | ENG DG | DATE 6-12 | |
| SEE CHART | MANUF | DATE | |
| TOLERANCE | CAGE CODE: 437R2 | | TITLE |
| IN [MM] | SHEET 1 OF 1 | SCALE 2:1 | OUTLINE,IT90, IMPEDANCE TRANSFORMING SMD COUPLER, 90°, 225 - 450 MHZ. 100W |
| .XX ±.02 [.50] .XXX ±.010 [.254] ANG. ±1/2° | | | SIZE B |
| | | | P/N IPP-7102IT* |
| | | | REV. C |