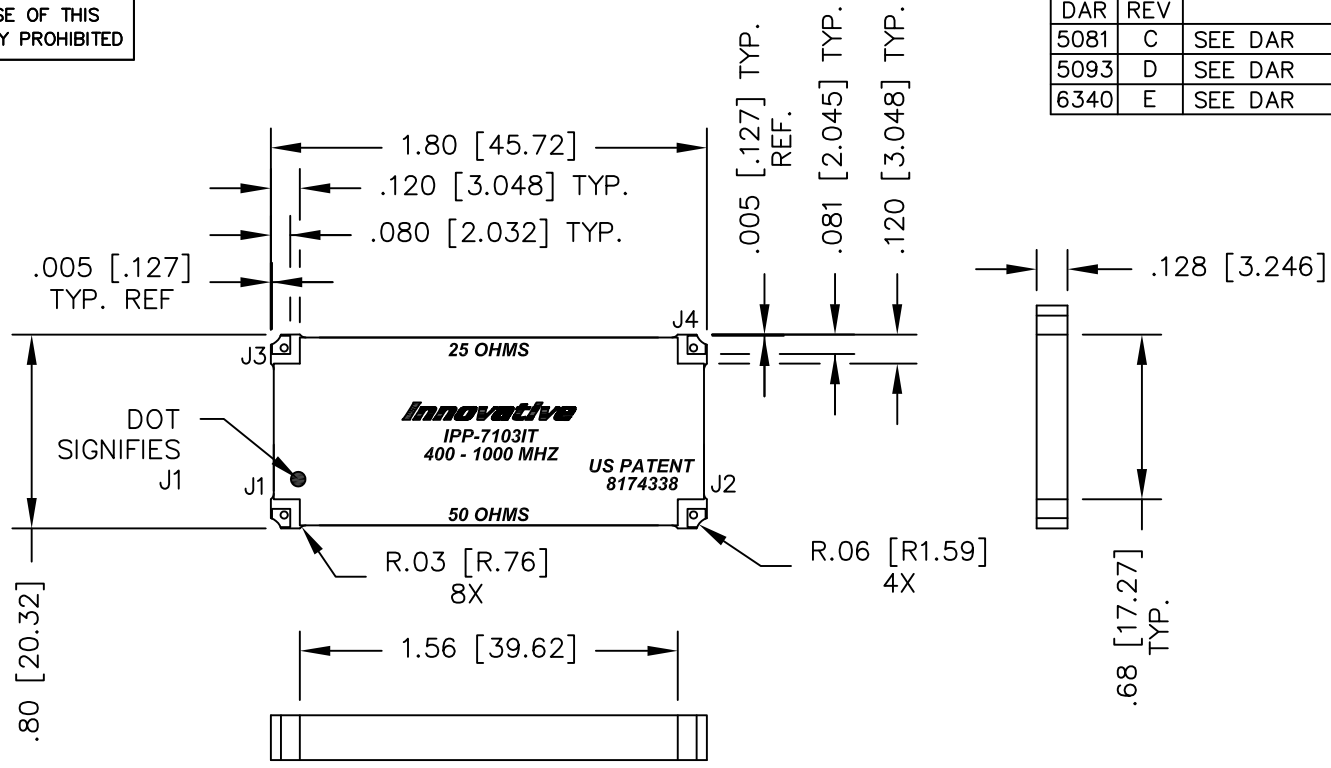


UNAUTHORIZED USE OF THIS  
DRAWING IS STRICTLY PROHIBITED

DAR	REV	DESCRIPTION	APPVD	DATE
5081	C	SEE DAR	DG	7-14
5093	D	SEE DAR	DG	7-14
6340	E	SEE DAR	DG	7-16



- NOTES:**
- PATENTED DESIGN: US PATENT #8174338.
  - SEE SMD COUPLER APPLICATION NOTE FOR FURTHER INFORMATION.
  - PARTS WITH RoHS MATTE TIN AND RoHS NICKEL GOLD FINISHES ARE RoHS COMPLIANT.
  - AVAILABLE IN TAPE AND REEL. SEE SMD COUPLER APPLICATION NOTE FOR FURTHER INFORMATION.

**ELECTRICAL SPECIFICATIONS**

FREQUENCY: 400 – 1000 MHz.  
 INSERTION LOSS: <0.50 dB  
 VSWR: <1.30:1  
 ISOLATION: >15dB  
 AMPLITUDE BALANCE: ±0.75dB  
 PHASE BALANCE: ±5°  
 POWER: 200 WATT  
 TEMPERATURE: -55°C TO 85°C

FINISH	
P/N	TYPE
IPP-7103IT	TIN/LEAD
IPP-7103ITRT	RoHS MATTE TIN
IPP-7103ITRG	RoHS NICKEL GOLD

PORT CONFIGURATION				
INPUT	J1	J2	J3	J4
J1, 50 Ω	---	ISOLATION	-3dB<0 DEG	-3dB<-90 DEG
J2, 50 Ω	ISOLATION	---	-3dB<-90 DEG	-3dB<0 DEG
J3, 25 Ω	-3dB<0 DEG	-3dB<-90 DEG	---	ISOLATION
J4, 25 Ω	-3dB<-90 DEG	-3dB<0 DEG	ISOLATION	---

MATERIAL	DWN S.Cornell	DATE 6-7-12	
	ENG DG	DATE 6-12	
FINISH SEE FINISH CHART	MANUF	DATE	TITLE OUTLINE,IT90,IMPEDANCE TRANSFORMING, SMD COUPLER, 90°, 400 - 1000 MHZ. 200W
	CAGE CODE: 437R2		
TOLERANCE	SHEET OF 1 1		SIZE B
IN [MM]	SCALE 2:1	P/N	IPP-7103IT
.XX ±.02 [.50] .XXX ±.010 [.254] ANG. ±1/2°		REV.	E