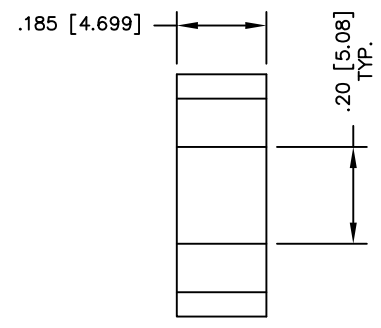
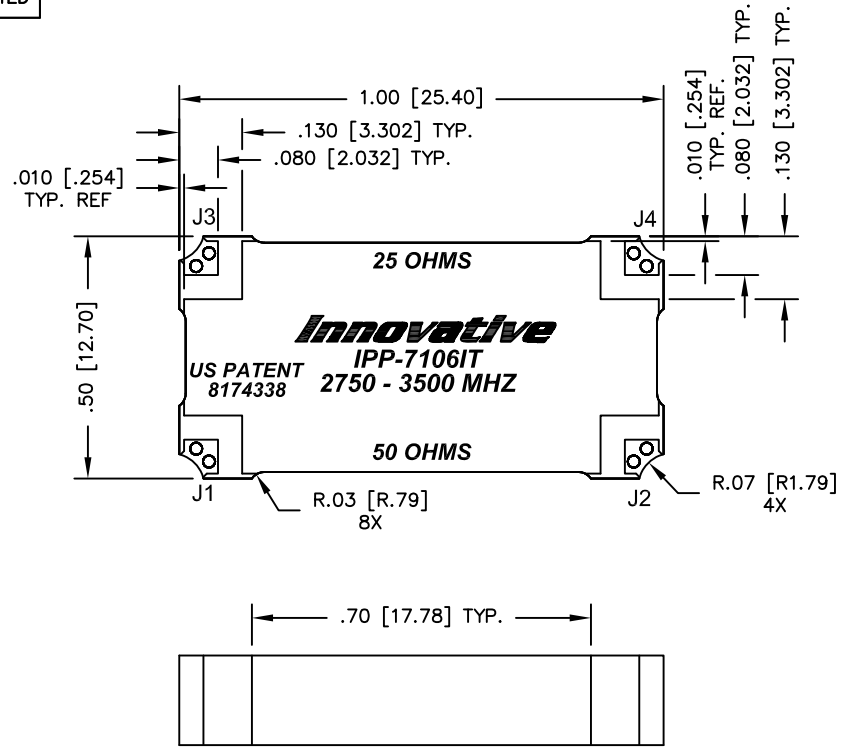


UNAUTHORIZED USE OF THIS
DRAWING IS STRICTLY PROHIBITED

DAR	REV	DESCRIPTION	APPVD	DATE
3714	A	INITIAL RELEASE	DG	6-12
4752	B	SEE DAR	DG	1-14



FINISH	
P/N	TYPE
IPP-7106IT	TIN/LEAD
IPP-7106ITRT	RoHS MATTE TIN
IPP-7106ITRG	RoHS NICKEL GOLD

- NOTES:**
- PATENTED DESIGN: US PATENT #8174338.
 - SEE SMD COUPLER APPLICATION NOTE FOR FURTHER INFORMATION.
 - PARTS WITH RoHS MATTE TIN AND RoHS NICKEL GOLD FINISHES ARE RoHS COMPLIANT.
 - AVAILABLE IN TAPE AND REEL. SEE SMD COUPLER APPLICATION NOTE FOR FURTHER INFORMATION.

PORT CONFIGURATION				
INPUT	J1	J2	J3	J4
J1, 50 Ω	--	ISOLATION	-3dB<0 DEG	-3dB<-90 DEG
J2, 50 Ω	ISOLATION	--	-3dB<-90 DEG	-3dB<0 DEG
J3, 25 Ω	-3dB<0 DEG	-3dB<-90 DEG	--	ISOLATION
J4, 25 Ω	-3dB<-90 DEG	-3dB<0 DEG	ISOLATION	--

ELECTRICAL SPECIFICATIONS

FREQUENCY: 2700 - 3500 MHz.
 INSERTION LOSS: < 0.40 dB
 VSWR: < 1.30:1
 ISOLATION: > 15 dB
 AMPLITUDE BALANCE: ±0.25 dB
 PHASE BALANCE: ±5°
 POWER: 250 WATT
 TEMPERATURE: -55°C TO 85°C

MATERIAL	DWN S.Cornell	DATE 6-7-12		
	ENG DG	DATE 6-12		
FINISH SEE FINISH CHART	MANUF	DATE	TITLE OUTLINE,IT90,IMPEDANCE TRANSFORMING SMD COUPLER, 90°, 2700 - 3500 MHz, 250W	
	CAGE CODE: 437R2			
TOLERANCE	SHEET OF 1 1		SCALE	4:1
IN [MM]	.XX ±.02 [.50] .XXX ±.010 [.254] ANG. ±1/2°		SIZE	B
			P/N	IPP-7106IT
			REV.	B