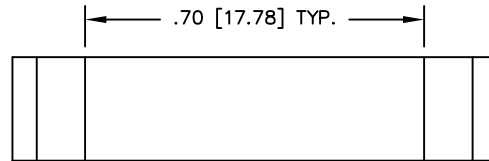
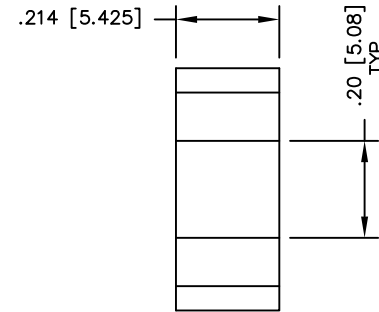
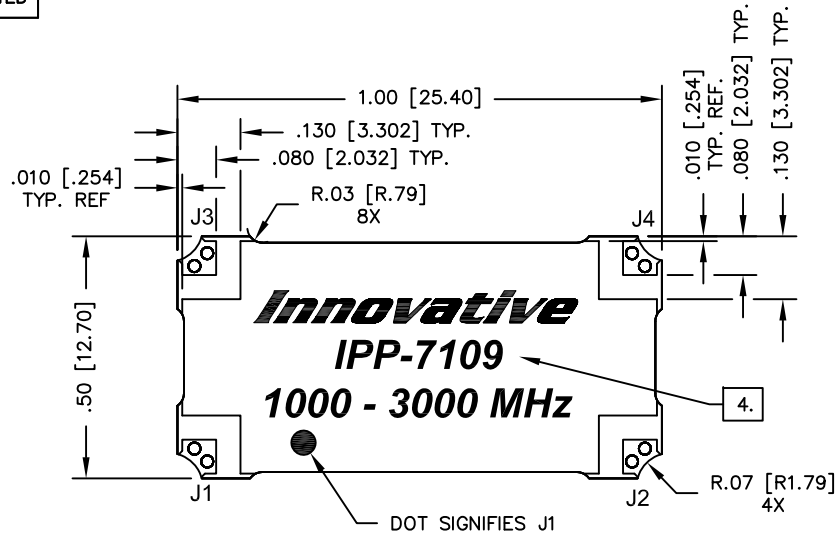


UNAUTHORIZED USE OF THIS
DRAWING IS STRICTLY PROHIBITED

DAR	REV	DESCRIPTION	APPV'D	DATE
4123	A	INITIAL RELEASE	DG	1-13
7374	B	SEE DAR	TJD	11-18



FINISH	
P/N	TYPE
IPP-7109	TIN/LEAD
IPP-7109RT	RoHS MATTE TIN
IPP-7109RC	RoHS NICKEL GOLD

NOTES:

- SEE SMD COUPLER APPLICATION NOTE FOR FURTHER INFORMATION.
- PARTS WITH RoHS MATTE TIN AND RoHS NICKEL GOLD FINISHES ARE RoHS COMPLIANT.
- AVAILABLE IN TAPE AND REEL. SEE SMD COUPLER APPLICATION NOTE FOR FURTHER INFORMATION.
- SEE CHART FOR PART NUMBER AND FINISH.

PORT CONFIGURATION				
INPUT	A	B	C	D
J1	--	ISOLATION	-3dB<0 DEG	-3dB<-90 DEG
J2	ISOLATION	--	-3dB<-90 DEG	-3dB<0 DEG
J3	-3dB<0 DEG	-3dB<-90 DEG	--	ISOLATION
J4	-3dB<-90 DEG	-3dB<0 DEG	ISOLATION	--

ELECTRICAL SPECIFICATIONS

FREQUENCY: 1000 - 3000 MHz.
 INSERTION LOSS: < 0.25 dB
 VSWR: < 1.30:1
 ISOLATION: > 17 dB
 AMPLITUDE BALANCE: ±1.1 dB
 PHASE BALANCE: ±6°
 POWER: 400 WATT
 TEMPERATURE: -55°C TO 85°C

MATERIAL	DWN S.Cornell	DATE 10-17-12			
	ENG DG	DATE 10-12			
FINISH SEE FINISH CHART	MANUF	DATE	TITLE OUTLINE		
	CAGE CODE: 437R2		SMD COUPLER, 90°, 1000 - 3000 MHz. 400W		
TOLERANCE	SHEET OF 1 1		SCALE	SIZE	P/N
IN [MM]	.XX ±.02 [.50] .XXX ±.010 [.254] ANG. ±1/2°		4:1	B	IPP-7109*
					REV. B