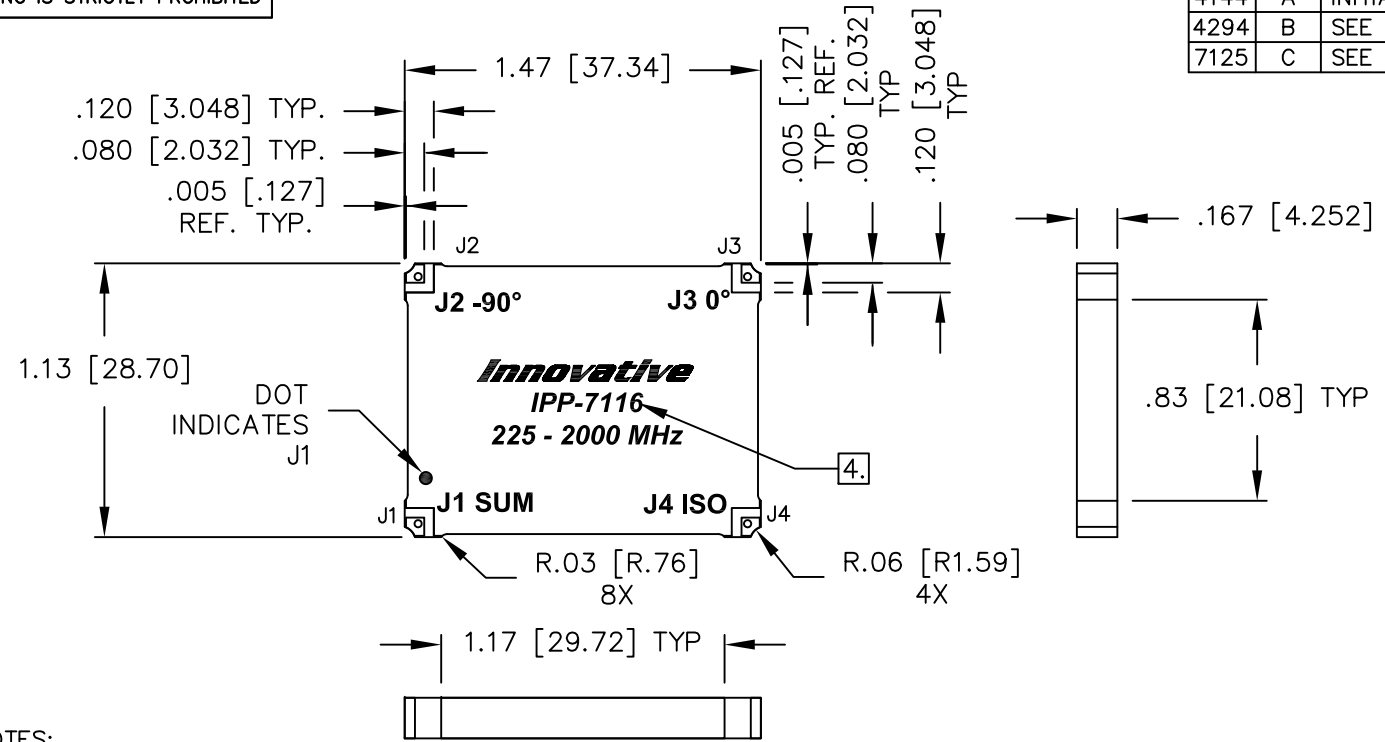


UNAUTHORIZED USE OF THIS  
DRAWING IS STRICTLY PROHIBITED

DAR	REV	DESCRIPTION	APPVD	DATE
4144	A	INITIAL RELEASE	DG	2-13
4294	B	SEE DAR	DG	5-13
7125	C	SEE DAR	DG	4-18



- NOTES:**
- SEE SMD COUPLER APPLICATION NOTE FOR FURTHER INFORMATION.
  - PARTS WITH RoHS MATTE TIN AND RoHS NICKEL GOLD FINISHES ARE RoHS COMPLIANT.
  - AVAILABLE IN TAPE AND REEL. SEE SMD COUPLER APPLICATION NOTE FOR FURTHER INFORMATION.
  - SEE CHART FOR PART NUMBER AND FINISH.

**ELECTRICAL SPECIFICATIONS**

FREQUENCY: 225 - 2000 MHz.  
 INSERTION LOSS: <0.80 dB  
 VSWR: <1.30: 1  
 ISOLATION: >17dB  
 AMPLITUDE BALANCE: ±1dB  
 PHASE BALANCE: ±5°  
 POWER: 200 WATT  
 TEMPERATURE: -55°C TO 85°C

FINISH	
P/N	TYPE
IPP-7116	TIN/LEAD
IPP-7116RT	RoHS MATTE TIN
IPP-7116RG	RoHS NICKEL GOLD

PORT CONFIGURATION				
INPUT	J1	J2	J3	J4
J1	---	-3dB<-90 DEG	-3dB<0 DEG	ISOLATION
J2	-3dB<-90 DEG	---	ISOLATION	-3dB<0 DEG
J3	-3dB<0 DEG	ISOLATION	---	-3dB<-90 DEG
J4	ISOLATION	-3dB<0 DEG	-3dB<-90 DEG	---

MATERIAL	DWN S.Cornell	DATE 12-11-12	<b>Innovative</b> <i>Power</i> <b>Products</b>			
FINISH	ENG DG	DATE 12-12				
TOLERANCE	SEE CHART	MANUF	DATE	TITLE		
IN [MM]	.XX ±.02 [.50] .XXX ±.010 [.254] ANG. ±1/2°	CAGE CODE: 437R2		OUTLINE SMD COUPLER, 90°, 225 - 2000 MHz. 200W		
	SHEET 1	OF 1	SCALE 2:1	SIZE B	P/N IPP-7116	REV. C