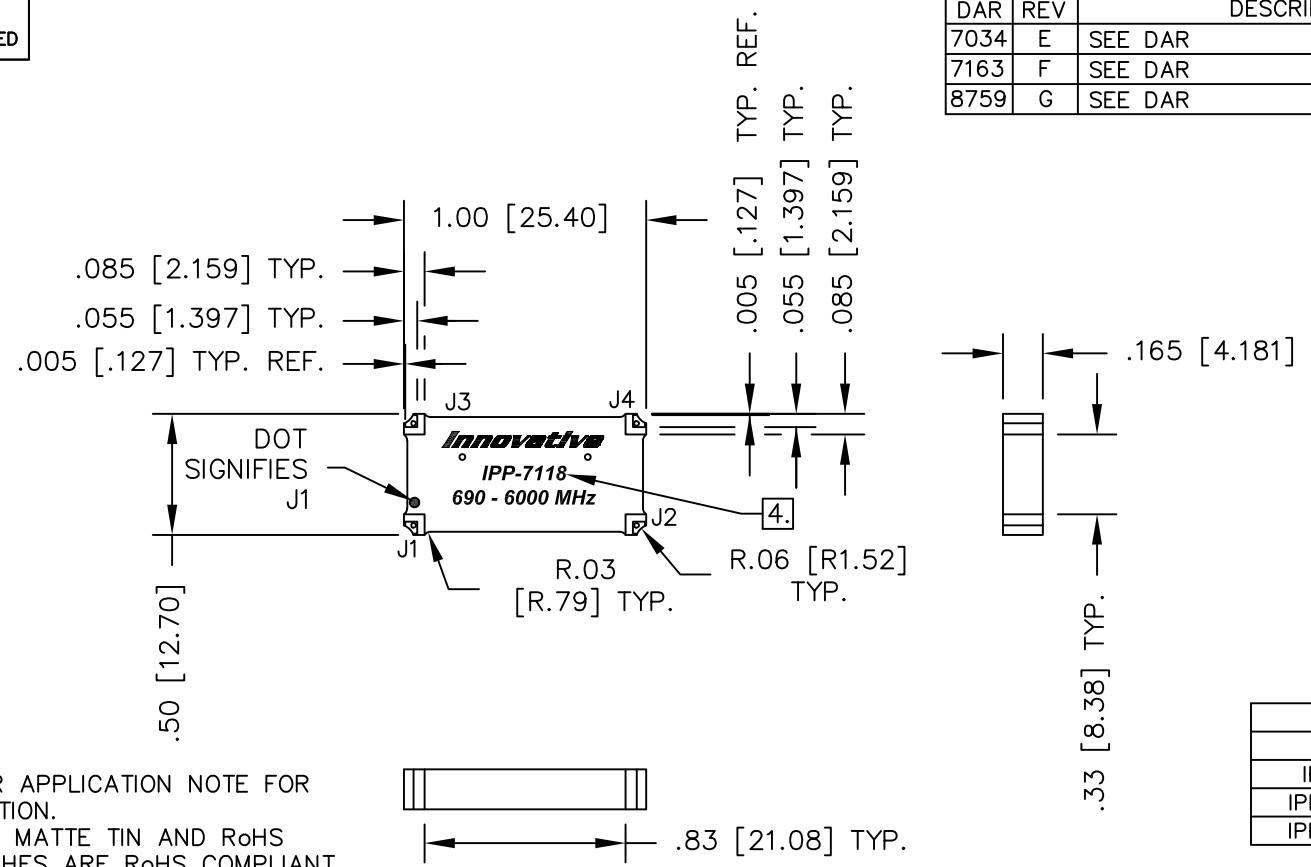


UNAUTHORIZED USE OF THIS  
DRAWING IS STRICTLY PROHIBITED

DAR	REV	DESCRIPTION	APPVD	DATE
7034	E	SEE DAR	DG	1-18
7163	F	SEE DAR	DG	5-18
8759	G	SEE DAR	DG	9-21



- NOTES:**
- SEE SMD COUPLER APPLICATION NOTE FOR FURTHER INFORMATION.
  - PARTS WITH RoHS MATTE TIN AND RoHS NICKEL GOLD FINISHES ARE RoHS COMPLIANT.
  - AVAILABLE IN TAPE AND REEL. SEE SMD COUPLER APPLICATION NOTE FOR FURTHER INFORMATION.
  - SEE CHART FOR PART NUMBER AND FINISH.

FINISH	
P/N	TYPE
IPP-7118	TIN/LEAD
IPP-7118RT	RoHS MATTE TIN
IPP-7118RG	RoHS NICKEL GOLD

**ELECTRICAL SPECIFICATIONS**

FREQUENCY: 690 – 6000 MHz.  
 INSERTION LOSS: <0.80 dB  
 VSWR: <1.40:1  
 ISOLATION: >15dB  
 AMPLITUDE BALANCE: ±0.90dB (±1.1dB 690–715 MHz)  
 PHASE BALANCE: ±9°  
 POWER: 50 WATT  
 TEMPERATURE: –55°C TO 85°C

PORT CONFIGURATION				
INPUT	J1	J2	J3	J4
J1	---	ISOLATION	-3dB<-90 DEG	-3dB<0 DEG
J2	ISOLATION	---	-3dB<0 DEG	-3dB<-90 DEG
J3	-3dB<-90 DEG	-3dB<0 DEG	---	ISOLATION
J4	-3dB<0 DEG	-3dB<-90 DEG	ISOLATION	---

MATERIAL	DWN S.Cornell	DATE 2-11-13			
	ENG DG	DATE 2-13			
FINISH SEE FINISH CHART	MANUF	DATE	TITLE OUTLINE		
	CAGE CODE: 437R2		SMD COUPLER, 90°, 690 - 6000 MHz. 50W		
TOLERANCE	SHEET OF 1 1		SCALE 2:1	SIZE B	P/N IPP-7118*
IN [MM]	.XX ±.02 [.50] .XXX ±.010 [.254] ANG. ±1/2°				REV. G