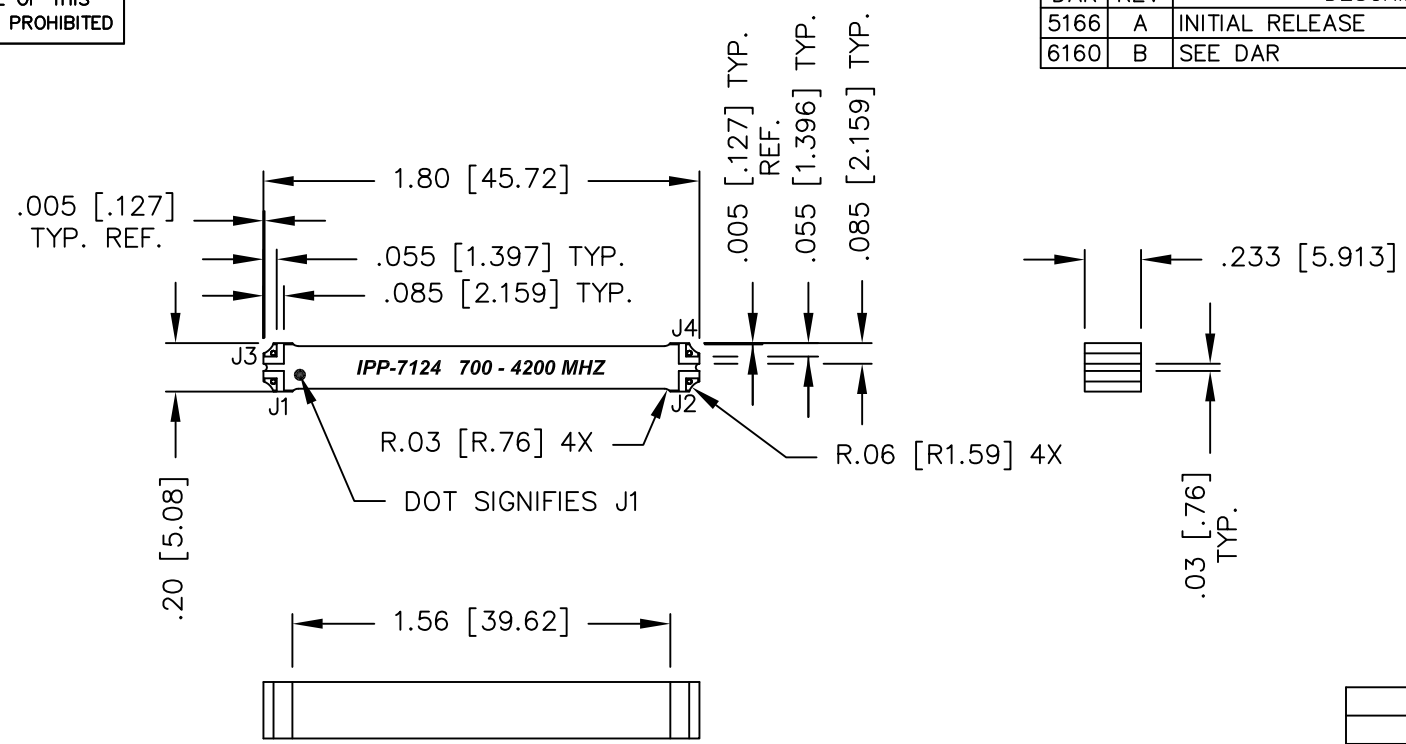


UNAUTHORIZED USE OF THIS  
DRAWING IS STRICTLY PROHIBITED

DAR	REV	DESCRIPTION	APPVD	DATE
5166	A	INITIAL RELEASE	DG	9-14
6160	B	SEE DAR	DG	4-16



- NOTES:**
1. SEE SMD COUPLER APPLICATION NOTE FOR FURTHER INFORMATION.
  2. PARTS WITH RoHS MATTE TIN AND RoHS NICKEL GOLD FINISHES ARE RoHS COMPLIANT.
  3. AVAILABLE IN TAPE AND REEL. SEE SMD COUPLER APPLICATION NOTE FOR FURTHER INFORMATION.

FINISH	
P/N	TYPE
IPP-7124	TIN/LEAD
IPP-7124RT	RoHS MATTE TIN
IPP-7124RG	RoHS NICKEL GOLD

**ELECTRICAL SPECIFICATIONS**

FREQUENCY: 700 - 4200 MHz.  
 INSERTION LOSS: <0.65 dB  
 VSWR: <1.50:1  
 ISOLATION: >13dB  
 AMPLITUDE BALANCE: ±0.85dB  
 PHASE BALANCE: ±5°  
 POWER: 150 WATT  
 TEMPERATURE: -55°C TO 85°C

PORT CONFIGURATION				
INPUT	J1	J2	J3	J4
J1	---	ISOLATION	-3dB<0 DEG	-3dB<-90 DEG
J2	ISOLATION	---	-3dB<-90 DEG	-3dB<0 DEG
J3	-3dB<0 DEG	-3dB<-90 DEG	---	ISOLATION
J4	-3dB<-90 DEG	-3dB<0 DEG	ISOLATION	---

MATERIAL	DWN S.Cornell	DATE 4-23-13				
	ENG DG	DATE 4-13				
FINISH SEE FINISH CHART	MANUF	DATE	TITLE OUTLINE			
	CAGE CODE: 437R2		SMD COUPLER, 90°, 700 - 4200 MHz. 150W			
TOLERANCE	.XX ±.02 [.50] .XXX ±.010 [.254] ANG. ±1/2°	SHEET OF 1 1	SCALE 2:1	SIZE	P/N	REV.
IN [MM]				B	IPP-7124*	B