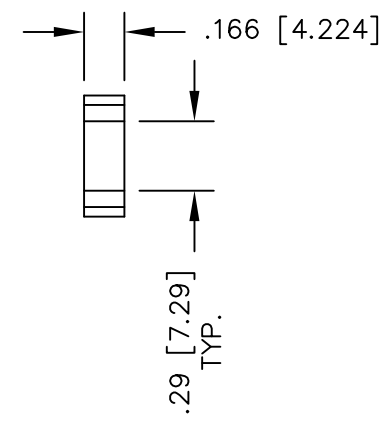
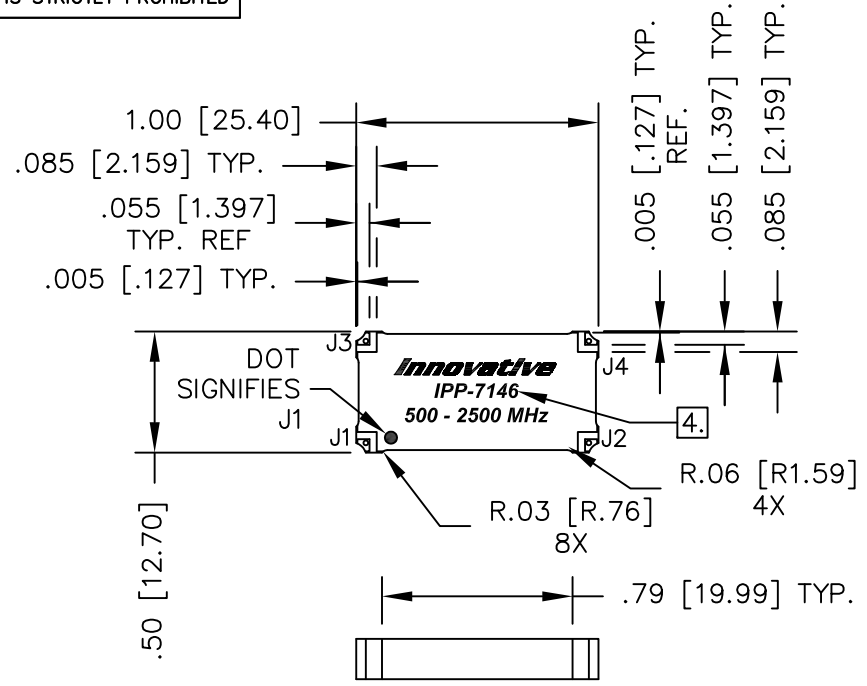


UNAUTHORIZED USE OF THIS
DRAWING IS STRICTLY PROHIBITED

DAR	REV	DESCRIPTION	APPVD	DATE
6258	A	INITIAL RELEASE	DG	6-13
7125	B	SEE DAR	DG	4-18



- NOTES:**
- SEE SMD COUPLER APPLICATION NOTE FOR FURTHER INFORMATION.
 - PARTS WITH RoHS MATTE TIN FINISH ARE RoHS COMPLIANT.
 - AVAILABLE IN TAPE AND REEL. SEE SMD COUPLER APPLICATION NOTE FOR FURTHER INFORMATION.
 - SEE CHART FOR PART NUMBER AND FINISH.

ELECTRICAL SPECIFICATIONS

FREQUENCY: 500 - 2500 MHz.
 INSERTION LOSS: <0.60 dB
 VSWR: <1.35:1
 ISOLATION: >16dB
 AMPLITUDE BALANCE: ±0.85dB
 PHASE BALANCE: ±5°
 POWER: 50 WATT
 TEMPERATURE: -55°C TO 85°C

FINISH	
P/N	TYPE
IPP-7146	TIN/LEAD
IPP-7146RT	RoHS MATTE TIN

PORT CONFIGURATION				
INPUT	J1	J2	J3	J4
J1	---	ISOLATION	-3dB<0 DEG	-3dB<-90 DEG
J2	ISOLATION	---	-3dB<-90 DEG	-3dB<0 DEG
J3	-3dB<0 DEG	-3dB<-90 DEG	---	ISOLATION
J4	-3dB<-90 DEG	-3dB<0 DEG	ISOLATION	---

MATERIAL	DWN	DG	DATE	4-16	
	ENG	TJD	DATE	4-16	
FINISH SEE FINISH CHART	MANUF	DATE	TITLE OUTLINE SMD COUPLER, 90°, 500 - 2500 MHz. 50W		
	CAGE CODE: 437R2		SIZE	P/N	
TOLERANCE	.XX ±.02 [.50]	SHEET	OF	SCALE	REV.
IN [MM]	.XXX ±.010 [.254]	1	1	2:1	B
	ANG. ±1/2°				B