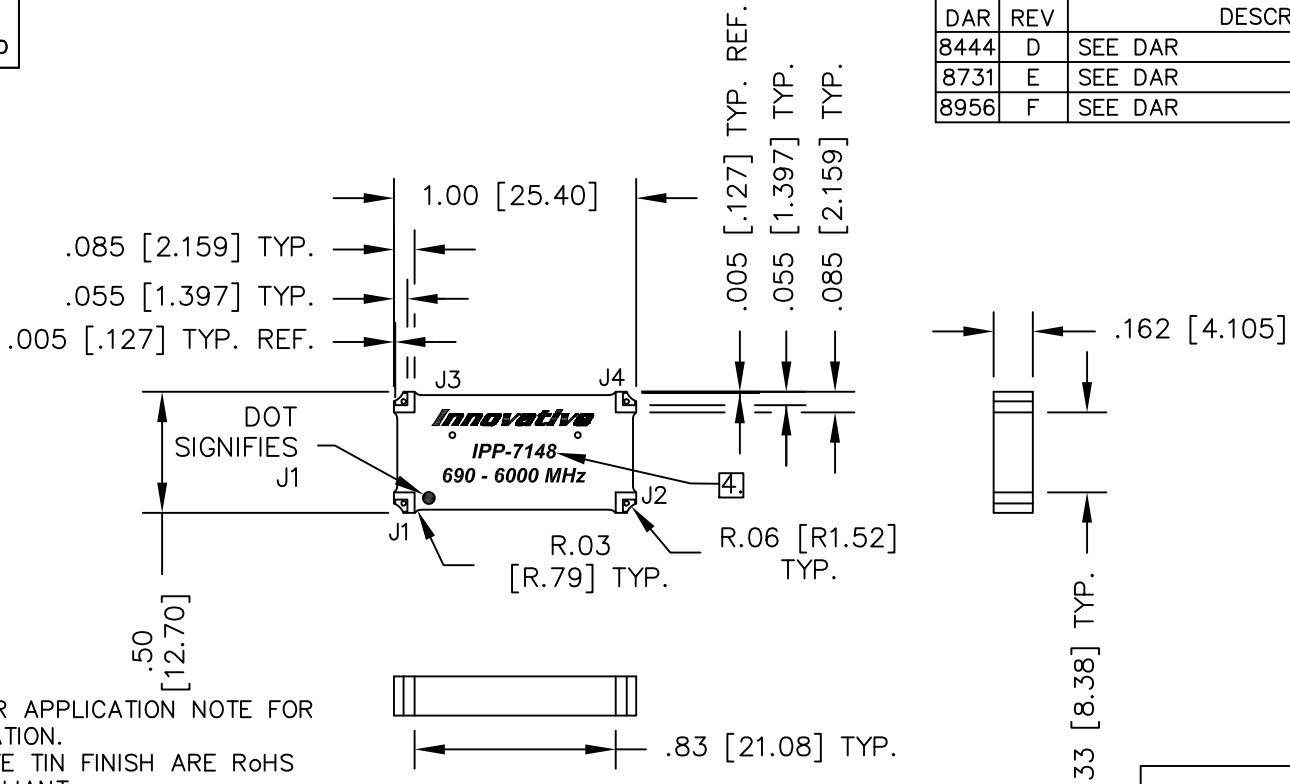


UNAUTHORIZED USE OF THIS
DRAWING IS STRICTLY PROHIBITED

DAR	REV	DESCRIPTION	APPVD	DATE
8444	D	SEE DAR	TJD	11-20
8731	E	SEE DAR	TJD	8-21
8956	F	SEE DAR	DG	5-22



- NOTES:**
- SEE SMD COUPLER APPLICATION NOTE FOR FURTHER INFORMATION.
 - PARTS WITH MATTE TIN FINISH ARE RoHS AND REACH COMPLIANT.
 - AVAILABLE IN TAPE AND REEL. SEE SMD COUPLER APPLICATION NOTE FOR FURTHER INFORMATION.
 - SEE CHART FOR PART NUMBER AND FINISH.
 - DATA AND SPECIFICATIONS APPLY WHEN PART IS MOUNTED IN IPP TEST FIXTURE TF-1225. TEST FIXTURE CONFIGURATION/FOOTPRINT AVAILABLE UPON REQUEST.

FINISH		
P/N	TYPE	COMPLIANCE
IPP-7148	TIN/LEAD	---
IPP-7148RT	MATTE TIN	RoHS & REACH

PORT CONFIGURATION				
INPUT	J1	J2	J3	J4
J1	---	ISOLATION	-3dB<-90 DEG	-3dB<0 DEG
J2	ISOLATION	---	-3dB<0 DEG	-3dB<-90 DEG
J3	-3dB<-90 DEG	-3dB<0 DEG	---	ISOLATION
J4	-3dB<0 DEG	-3dB<-90 DEG	ISOLATION	---

ELECTRICAL SPECIFICATIONS

FREQUENCY: 690 - 6000 MHz.
 INSERTION LOSS: <0.80 dB
 VSWR: <1.50:1
 ISOLATION: >15 dB
 AMPLITUDE BALANCE: ±0.90dB (±1.1dB 690-715 MHz)
 PHASE BALANCE: ±10°
 POWER: 130 WATT
 TEMPERATURE: -55°C TO 85°C

MATERIAL	DWN S.Cornell	DATE 5-9-16			
	ENG DG	DATE 5-16			
FINISH SEE FINISH CHART	MANUF	DATE	TITLE OUTLINE		
	CAGE CODE: 437R2		SMD COUPLER, 90°, 690 - 6000 MHz. 130W		
TOLERANCE	SHEET OF 1 1		SCALE 2:1	SIZE B	P/N IPP-7148*
IN [MM]	.XX ±.02 [.50] .XXX ±.010 [.254] ANG. ±1/2°				REV. F