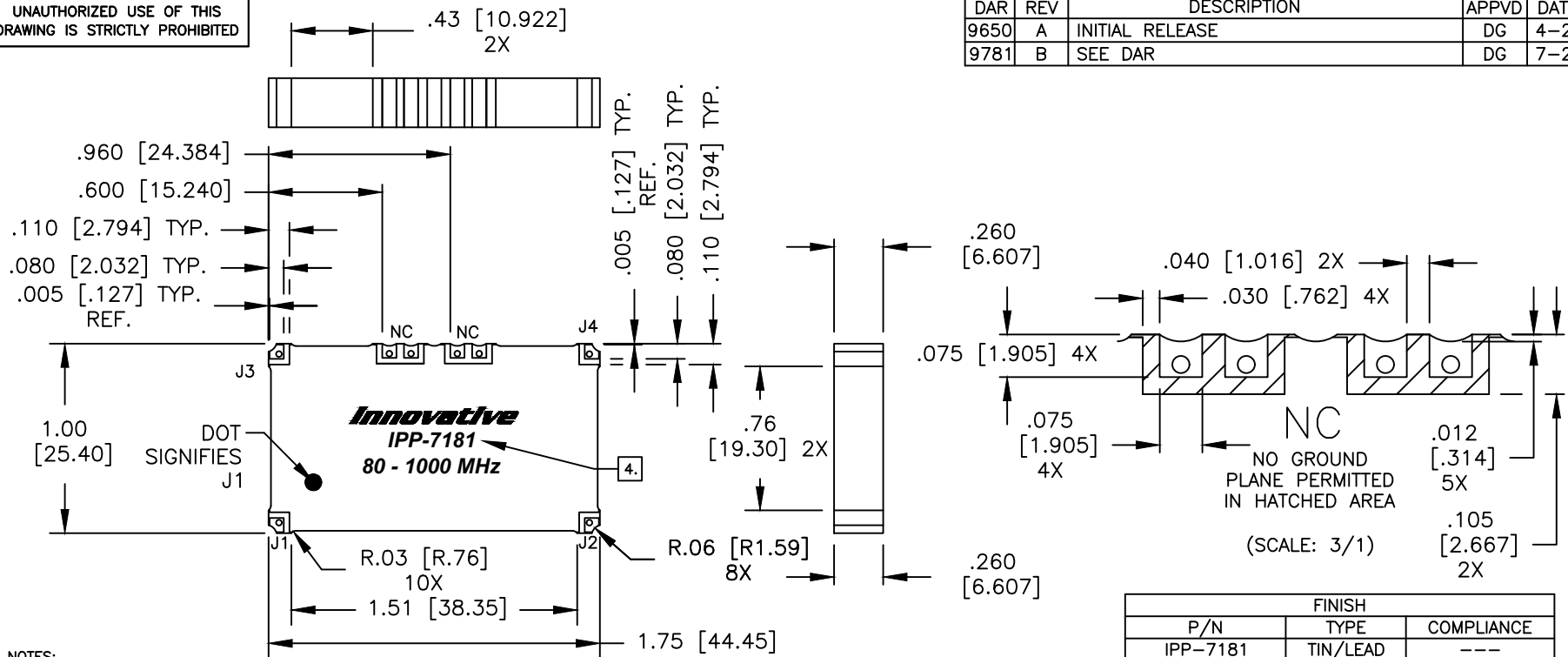


UNAUTHORIZED USE OF THIS
DRAWING IS STRICTLY PROHIBITED

DAR	REV	DESCRIPTION	APPV'D	DATE
9650	A	INITIAL RELEASE	DG	4-24
9781	B	SEE DAR	DG	7-24



NOTES:

- SEE SMD COUPLER APPLICATION NOTE FOR FURTHER INFORMATION.
- PARTS WITH RoHS MATTE TIN FINISH ARE RoHS AND REACH COMPLIANT.
- AVAILABLE IN TAPE AND REEL. SEE SMD COUPLER APPLICATION NOTE FOR FURTHER INFORMATION.
- SEE CHART FOR PART NUMBER AND FINISH.
- DATA AND SPECIFICATIONS APPLY WHEN PART IS MOUNTED IN IPP TEST FIXTURE. TEST FIXTURE CONFIGURATION/FOOTPRINT AVAILABLE UPON REQUEST.

ELECTRICAL SPECIFICATIONS

FREQUENCY: 80 - 1000 MHz.
 INSERTION LOSS: <0.90 dB
 VSWR: <1.40:1
 ISOLATION: >15 dB
 AMPLITUDE BALANCE: ±1.0 dB 125-1000 MHz
 AMPLITUDE BALANCE: ±2.0 dB @ 80 MHz
 PHASE BALANCE: ±6°
 POWER: 250 WATT
 TEMPERATURE: -55°C TO 85°C

FINISH		
P/N	TYPE	COMPLIANCE
IPP-7181	TIN/LEAD	---
IPP-7181RT	MATTE TIN	RoHS & REACH

PORT CONFIGURATION				
INPUT	J1	J2	J3	J4
J1	---	ISOLATION	-3dB<0 DEG	-3dB<-90 DEG
J2	ISOLATION	---	-3dB<-90 DEG	-3dB<0 DEG
J3	-3dB<0 DEG	-3dB<-90 DEG	---	ISOLATION
J4	-3dB<-90 DEG	-3dB<0 DEG	ISOLATION	---

MATERIAL	DWN DG	DATE 11-22	Innovative Power® Products	
FINISH	ENG TJD	DATE 11-22		
SEE FINISH CHART	MANUF	DATE	TITLE OUTLINE	
TOLERANCE	CAGE CODE: 437R2		SMD COUPLER, 90°, 80 - 1000 MHz. 250W	
.XX ±.02 [.50] IN [MM] .XXX ±.010 [.254] ANG. ±1/2°	SHEET 1	OF 1	SCALE 2:1	SIZE B
				P/N IPP-7181*
				REV. B