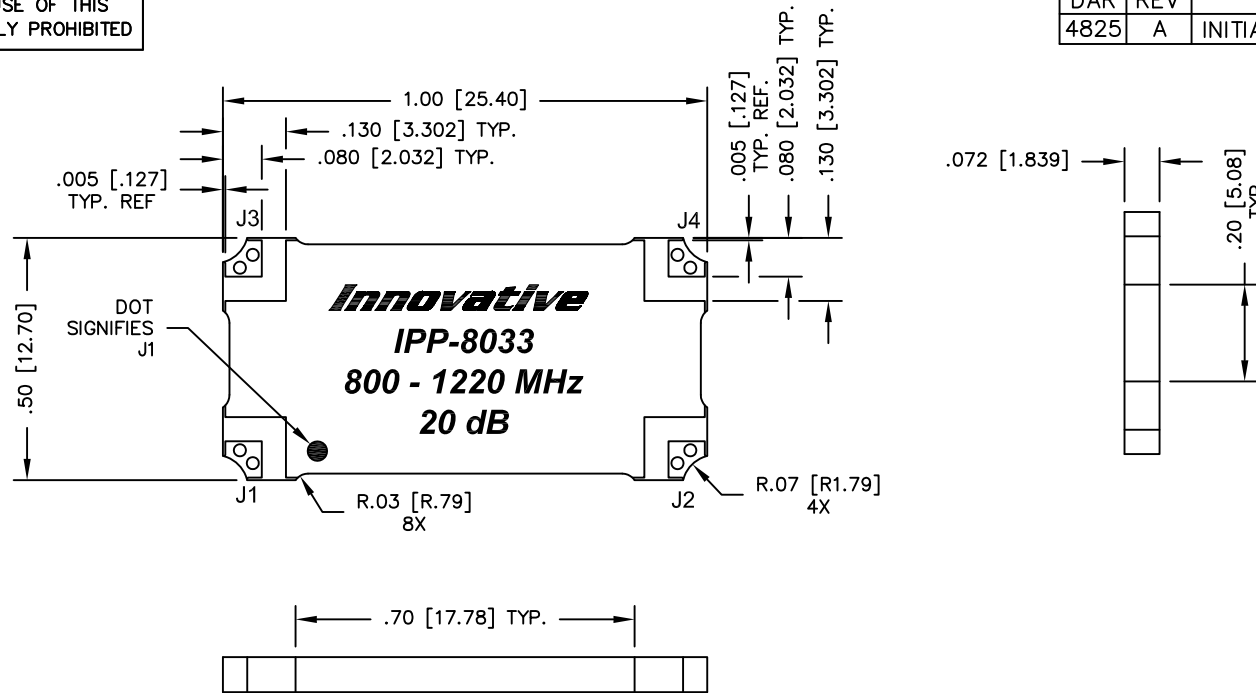


UNAUTHORIZED USE OF THIS
DRAWING IS STRICTLY PROHIBITED

DAR	REV	DESCRIPTION	APPVD	DATE
4825	A	INITIAL RELEASE	DG	3-14



NOTES:

1. SEE SMD COUPLER APPLICATION NOTE FOR FURTHER INFORMATION.
2. PARTS WITH RoHS MATTE TIN AND RoHS NICKEL GOLD FINISHES ARE RoHS COMPLIANT.
3. AVAILABLE IN TAPE AND REEL. SEE SMD COUPLER APPLICATION NOTE FOR FURTHER INFORMATION.

ELECTRICAL SPECIFICATIONS

FREQUENCY: 800 – 1220 MHz.
 INSERTION LOSS: <0.20 dB
 MAIN LINE VSWR: <1.25:1
 COUPLING: 20dB ±1.0 dB, 800–1000 MHz
 20dB +2.0 –1.0 dB, 950–1220 MHz
 DIRECTIVITY: >20 dB
 POWER: 300 WATT
 TEMPERATURE: –55°C TO +100°C
 COUPLED FLATNESS: ±0.3 dB, 800–1000 MHz
 ±0.8 dB, 950–1220 MHz

FINISH	
P/N	TYPE
IPP-8033	TIN/LEAD
IPP-8033RT	RoHS MATTE TIN
IPP-8033RG	RoHS NICKEL GOLD

PORT CONFIGURATION			
INPUT	OUTPUT	FORWARD COUPLED	REFLECTED COUPLED
J1	J2	J3	J4 ADD 50Ω TERMINATION
J1	J2	J3 ADD 50Ω TERMINATION	J4
J2	J1	J4	J3 ADD 50Ω TERMINATION
J2	J1	J4 ADD 50Ω TERMINATION	J3

MATERIAL	DWN S.Cornell	DATE 5-17-10				
FINISH	ENG DG	DATE 6-10				
SEE FINISH CHART	MANUF	DATE	TITLE OUTLINE, SMD COUPLER			
TOLERANCE	CAGE CODE: 437R2		BDC, 800-1220 MHz. -20dB 300W			
IN [MM]	.XX ±.02 [.50]	SHEET OF 1 1	SCALE 4:1	SIZE B	P/N IPP-8033*	REV. A
	.XXX ±.010 [.254]					
	ANG. ±1/2°					