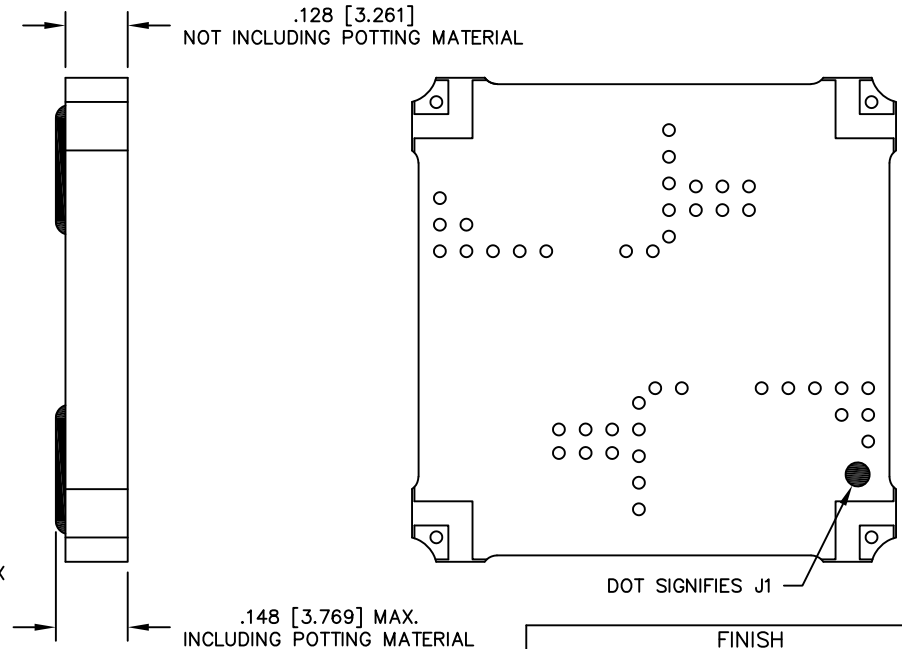
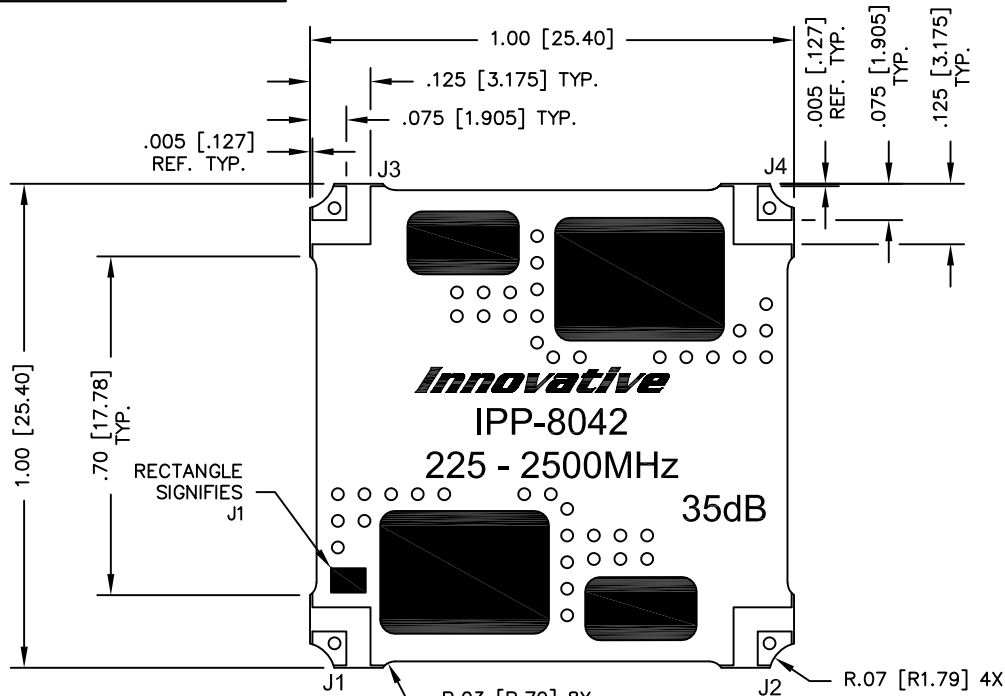


UNAUTHORIZED USE OF THIS  
DRAWING IS STRICTLY PROHIBITED

DAR	REV	DESCRIPTION	APPVD	DATE
4450	J	SEE DAR	DG	7-13
6646	K	SEE DAR	DG	4-17
8399	L	SEE DAR	DG	10-20



**NOTES:**

- SEE SMD COUPLER APPLICATION NOTE FOR FURTHER INFORMATION.
- PARTS WITH RoHS MATTE TIN FINISH ARE RoHS COMPLIANT.
- AVAILABLE IN TAPE AND REEL. SEE SMD COUPLER APPLICATION NOTE FOR FURTHER INFORMATION.
- DO NOT EXCEED 220°C WHEN INSTALLING COUPLER.

ELECTRICAL SPECIFICATIONS

FREQUENCY: 225 - 2500 MHz.  
 INSERTION LOSS: <0.30 dB  
 MAIN LINE VSWR: <1.25:1  
 COUPLING: 35dB ±1.5 dB  
 DIRECTIVITY: >18 dB  
 COUPLED FLATNESS: ±1.0dB  
 POWER: 100 WATT  
 TEMPERATURE: -55°C TO 85°C

FINISH	
P/N	TYPE
IPP-8042	TIN/LEAD
IPP-8042RT	RoHS MATTE TIN

PORT CONFIGURATION			
INPUT	OUTPUT	FORWARD COUPLED	REFLECTED COUPLED
J3	J2	J1	J4
J2	J3	J4	J1

MATERIAL	DWN S.Cornell	DATE 10-22-10	<b>Innovative</b> <i>Power</i> <b>Products</b>		
FINISH	ENG DG	DATE 10-10			
SEE FINISH CHART	MANUF	DATE	TITLE OUTLINE, SMD COUPLER		
TOLERANCE	CAGE CODE: 437R2		DUAL DIRECTIONAL, 225 - 2500 MHz. 100W		
IN [MM]	SHEET OF	SCALE	SIZE	P/N	REV.
.XX ±.02 [.50] .XXX ±.010 [.254] ANG. ±1/2°	1 1	4:1	B	IPP-8042*	L