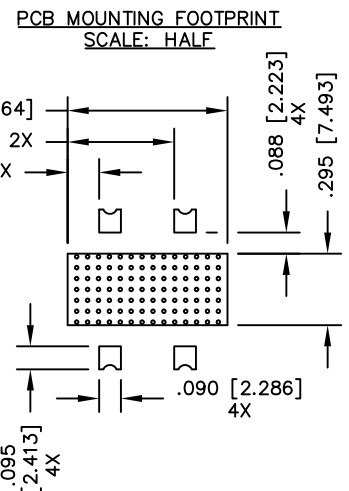
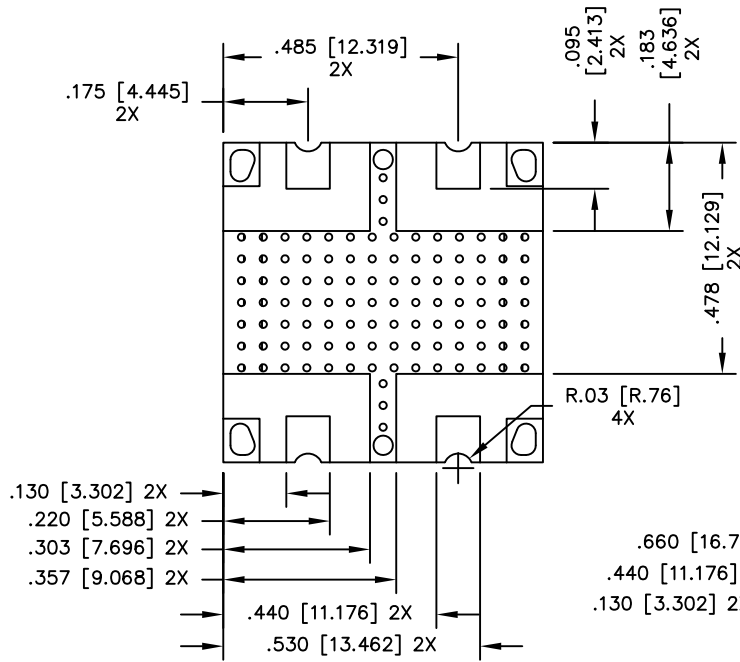
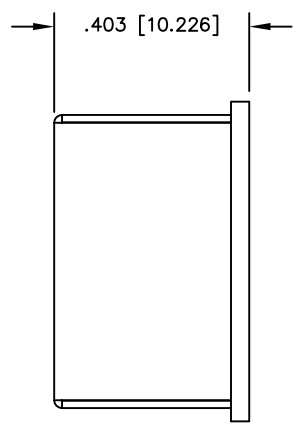
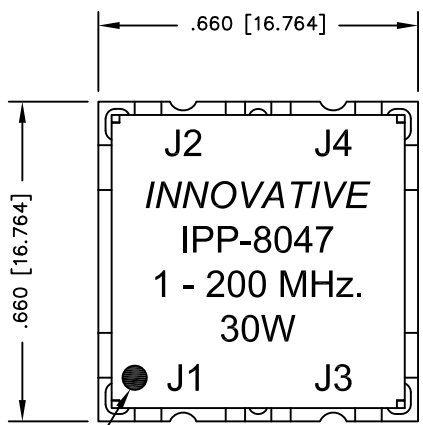


UNAUTHORIZED USE OF THIS
DRAWING IS STRICTLY PROHIBITED

DAR	REV	DESCRIPTION	APPVD	DATE
4448	C	SEE DAR	DG	7-13
5113	D	SEE DAR	DG	8-14
7902	E	SEE DAR	TJD	10-19



- NOTES:**
- DO NOT EXCEED 220°C WHEN INSTALLING COUPLER.
 - RoHS COMPLIANT.

ELECTRICAL SPECIFICATIONS

FREQUENCY: 1 - 200 MHz.
 INSERTION LOSS: <0.20 dB
 MAIN LINE VSWR: <1.25:1
 COUPLING: 20dB ±1.0 dB
 DIRECTIVITY: >20 dB
 COUPLED FLATNESS: ±0.5 dB
 POWER: 30 WATT
 TEMPERATURE: -55°C TO 85°C

PORT CONFIGURATION			
INPUT	OUTPUT	FORWARD COUPLED	REFLECTED COUPLED
J1	J2	J3	J4 ADD 50Ω TERMINATION
J1	J2	J3 ADD 50Ω TERMINATION	J4
J2	J1	J4	J3 ADD 50Ω TERMINATION
J2	J1	J4 ADD 50Ω TERMINATION	J3

MATERIAL	DWN S.Cornell	DATE 2-9-11				
	ENG DG	DATE 2-11				
FINISH	IMMERSION TIN	MANUF	DATE	TITLE	OUTLINE, SMD COUPLER BI-DIRECTIONAL, 1 - 200 MHz. 30W	
		CAGE CODE: 437R2				
TOLERANCE	IN [MM]	SHEET 1 OF 1	SCALE 4:1	SIZE	P/N	REV.
.XX ±.02 [.50] .XXX ±.010 [.254] ANG. ±1/2°				B	IPP-8047	E