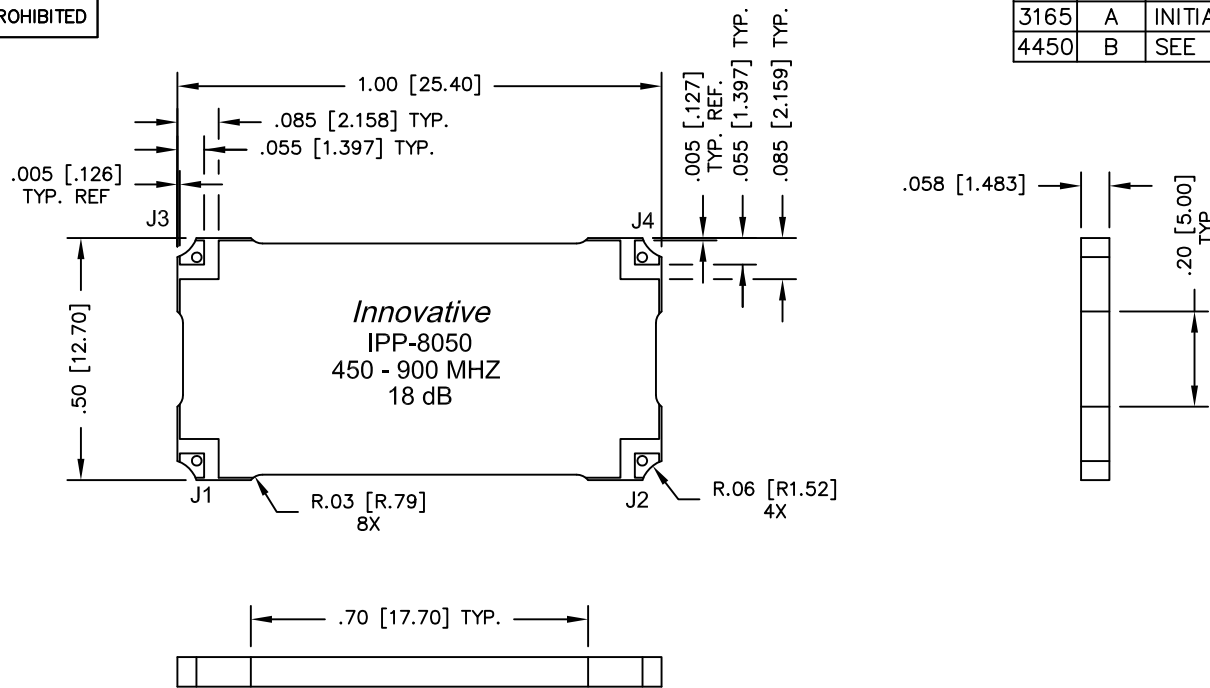


UNAUTHORIZED USE OF THIS
DRAWING IS STRICTLY PROHIBITED

DAR	REV	DESCRIPTION	APPVD	DATE
3165	A	INITIAL RELEASE	DG	6-11
4450	B	SEE DAR	DG	7-13



FINISH	
P/N	TYPE
IPP-8050	TIN/LEAD
IPP-8050RT	RoHS MATTE TIN
IPP-8050RG	RoHS NICKEL GOLD

NOTES:

1. SEE SMD COUPLER APPLICATION NOTE FOR FURTHER INFORMATION.
2. PARTS WITH RoHS MATTE TIN AND RoHS NICKEL GOLD FINISHES ARE RoHS COMPLIANT.
3. AVAILABLE IN TAPE AND REEL. SEE SMD COUPLER APPLICATION NOTE FOR FURTHER INFORMATION.

ELECTRICAL SPECIFICATIONS

FREQUENCY: 450 – 900 MHz.
 INSERTION LOSS: <0.25 dB
 MAIN LINE VSWR: <1.25:1
 COUPLING: 18dB ±1.5dB
 COUPLED FLATNESS: ±1.0 dB
 DIRECTIVITY: >22 dB
 POWER: 150 WATT
 TEMPERATURE: -55°C TO +85°C

PORT CONFIGURATION			
INPUT	OUTPUT	FORWARD COUPLED	REFLECTED COUPLED
J1	J2	J3	J4 ADD 50Ω TERMINATION
J1	J2	J3 ADD 50Ω TERMINATION	J4
J2	J1	J4	J3 ADD 50Ω TERMINATION
J2	J1	J4 ADD 50Ω TERMINATION	J3

MATERIAL	DWN DG	DATE 5-11		
FINISH	ENG TJD	DATE 5-11		
SEE FINISH CHART	MANUF	DATE	TITLE	
TOLERANCE	CAGE CODE: 437R2		OUTLINE, SMD COUPLER	
IN [MM]	SHEET 1	OF 1	SCALE 4:1	BDC, 450-900 MHz. 18dB 150W
.XX ±.02 [.50]			SIZE B	P/N IPP-8050
.XXX ±.010 [.254]				REV. B
ANG. ±1/2°				