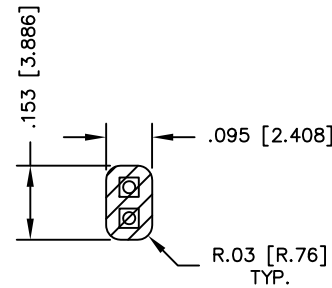
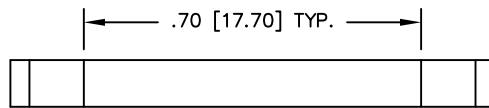
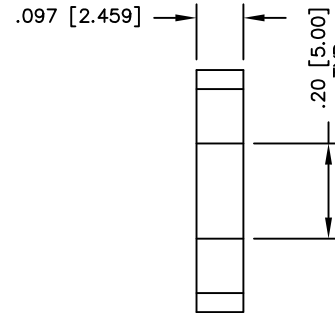
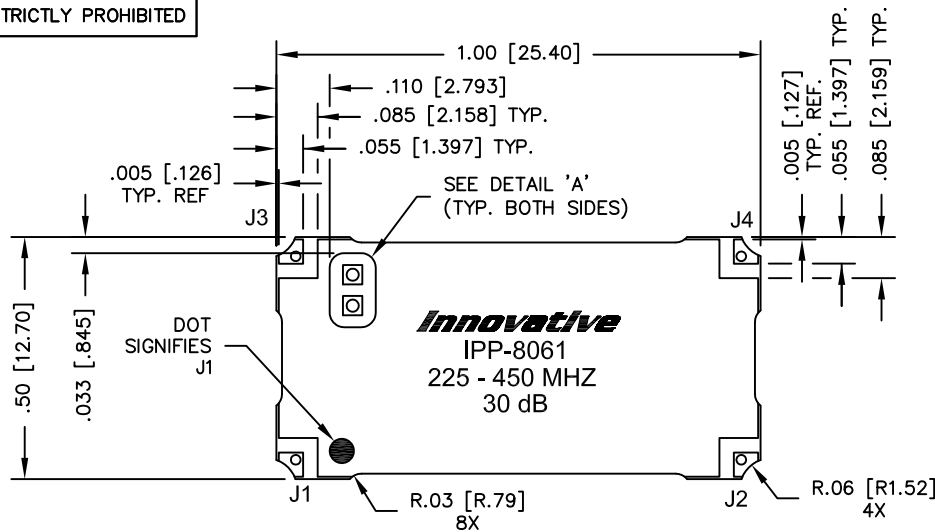


UNAUTHORIZED USE OF THIS  
DRAWING IS STRICTLY PROHIBITED

DAR	REV	DESCRIPTION	APPVD	DATE
3455	A	INITIAL RELEASE	TJD	1-12
4409	B	SEE DAR	TJD	7-13
4450	C	SEE DAR	DG	7-13
4649	D	SEE DAR	DG	10-13



DETAIL 'A'  
GROUND NOT  
PERMITTED IN  
HATCHED AREA

FINISH	
P/N	TYPE
IPP-8061	TIN/LEAD
IPP-8061RT	RoHS MATTE TIN
IPP-8061RG	RoHS NICKEL GOLD

PORT CONFIGURATION			
INPUT	OUTPUT	FORWARD COUPLED	REFLECTED COUPLED
J1	J2	J3	J4 ADD 50Ω TERMINATION
J1	J2	J3 ADD 50Ω TERMINATION	J4
J2	J1	J4	J3 ADD 50Ω TERMINATION
J2	J1	J4 ADD 50Ω TERMINATION	J3

**NOTES:**

- SEE SMD COUPLER APPLICATION NOTE FOR FURTHER INFORMATION.
- PARTS WITH RoHS MATTE TIN AND RoHS NICKEL GOLD FINISHES ARE RoHS COMPLIANT.
- AVAILABLE IN TAPE AND REEL. SEE SMD COUPLER APPLICATION NOTE FOR FURTHER INFORMATION.

**ELECTRICAL SPECIFICATIONS**

FREQUENCY: 225 - 450 MHz.  
 INSERTION LOSS: <0.25 dB  
 MAIN LINE VSWR: <1.25:1  
 COUPLING: 30dB ±1.5 dB  
 DIRECTIVITY: >16 dB  
 COUPLED FLATNESS: ±1.25 dB  
 POWER: 150 WATT  
 TEMPERATURE: -55°C TO 85°C

MATERIAL	DWN DG	DATE 12-11	<b>Innovative</b> <i>Power</i> <b>Products</b>
FINISH	ENG TJD	DATE 12-11	
SEE FINISH CHART	MANUF	DATE	TITLE
TOLERANCE	CAGE CODE: 437R2		OUTLINE, SMD COUPLER
IN [MM]	SHEET OF	SCALE	BDC, 225-450 MHz. 30dB 150W
.XX ±.02 [.50]	1 1	4:1	SIZE
.XXX ±.010 [.254]			P/N
ANG. ±1/2°			IPP-8061
			REV.
			D