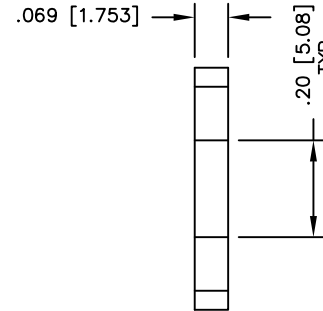
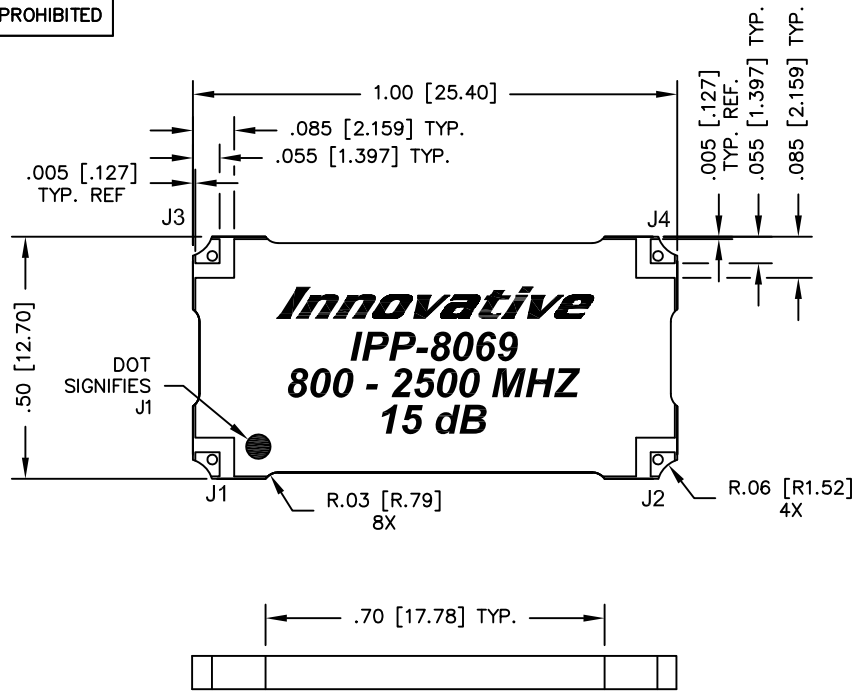


UNAUTHORIZED USE OF THIS
DRAWING IS STRICTLY PROHIBITED

DAR	REV	DESCRIPTION	APPVD	DATE
3924	A	INITIAL RELEASE	TJD	9-12
3979	B	SEE DAR	DG	11-12
4451	C	SEE DAR	DG	7-13



FINISH	
P/N	TYPE
IPP-8069	TIN/LEAD
IPP-8069RT	RoHS MATTE TIN
IPP-8069RG	RoHS NICKEL GOLD

NOTES:

1. SEE SMD COUPLER APPLICATION NOTE FOR FURTHER INFORMATION.
2. PARTS WITH RoHS MATTE TIN AND RoHS NICKEL GOLD FINISHES ARE RoHS COMPLIANT.
3. AVAILABLE IN TAPE AND REEL. SEE SMD COUPLER APPLICATION NOTE FOR FURTHER INFORMATION.

ELECTRICAL SPECIFICATIONS

FREQUENCY:	800 – 2500 MHz.
INSERTION LOSS:	<0.40 dB
MAIN LINE VSWR:	<1.25:1
COUPLING:	15dB ±1.25 dB
COUPLED FLATNESS:	±0.75 dB
DIRECTIVITY:	>20 dB
POWER:	150 WATT
TEMPERATURE:	-55°C TO +85°C

PORT CONFIGURATION			
INPUT	OUTPUT	FORWARD COUPLED	REFLECTED COUPLED
J1	J2	J3	J4 ADD 50Ω TERMINATION
J1	J2	J3 ADD 50Ω TERMINATION	J4
J2	J1	J4	J3 ADD 50Ω TERMINATION
J2	J1	J4 ADD 50Ω TERMINATION	J3

MATERIAL	DWN DG	DATE 9-12		
FINISH	ENG TJD	DATE 9-12		
SEE FINISH CHART	MANUF	DATE	TITLE	
TOLERANCE	CAGE CODE: 437R2		OUTLINE, SMD COUPLER	
IN [MM]	SHEET 1	OF 1	BDC, 800-2500 MHz. -15dB 150W	
.XX ±.02 [.50]	SCALE	4:1	SIZE	P/N
.XXX ±.010 [.254]			B	IPP-8069
ANG. ±1/2°				REV. C