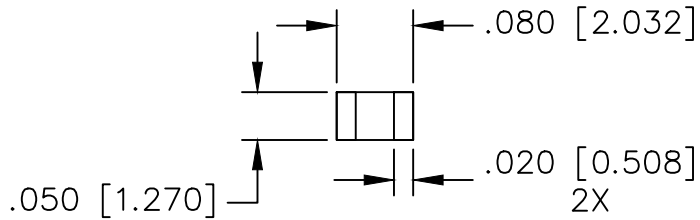


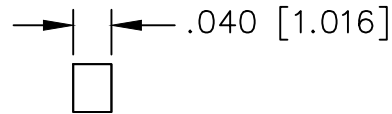
UNAUTHORIZED USE OF THIS  
DRAWING IS STRICTLY PROHIBITED

| DAR  | REV | DESCRIPTION | APPVD | DATE |
|------|-----|-------------|-------|------|
| 9365 | 1   | PRE-RELEASE | TJD   | 7-23 |
| 9600 | 2   | SEE DAR     | DG    | 2-24 |

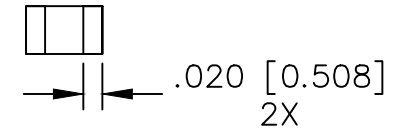
TOP SIDE



EDGE WRAP, 2X  
(OMIT FOR IPP-CCN0805-40N)



BOTTOM SIDE



NOTES:

1. SEE COOL CHIP APPLICATION NOTE FOR FURTHER INFORMATION.
2. PARTS ARE RoHS AND REACH COMPLIANT.
3. AVAILABLE IN TAPE AND REEL. SEE COOL CHIP APPLICATION NOTE FOR FURTHER INFORMATION.

ELECTRICAL SPECIFICATIONS

THERMAL CONDUCTIVITY: 5.5°C/W  
 CAPACITANCE (SERIES): <0.1pF  
 CAPACITANCE (SHUNT): <0.1pF

| PART NO.        | WRAPPING     |
|-----------------|--------------|
| IPP-CCN0805-40  | EDGE WRAPPED |
| IPP-CCN0805-40N | NO EDGE WRAP |

|                            |                  |       |      |                 |  |
|----------------------------|------------------|-------|------|-----------------|--|
| MATERIAL<br>SUBSTRATE: ALN | DWN              | DG    | DATE | 7-23            | <b>Innovative</b> <sup>Power</sup> <sub>Products</sub> |
|                            | ENG              | TJD   | DATE | 7-23            |  |
| FINISH<br>GOLD OVER NICKEL | MANUF            | DATE  |      |                 |  |
| TOLERANCE<br>IN [MM]       | CAGE CODE: 437R2 |       |      |                 |  |
|                            | .XX ±.02 [.50]   | SHEET | OF   | SCALE           | P/N  |
| .XXX ±.010 [.254]          | 1                | 1     | 8:1  | IPP-CCN0805-40X | REV.<br>2  |