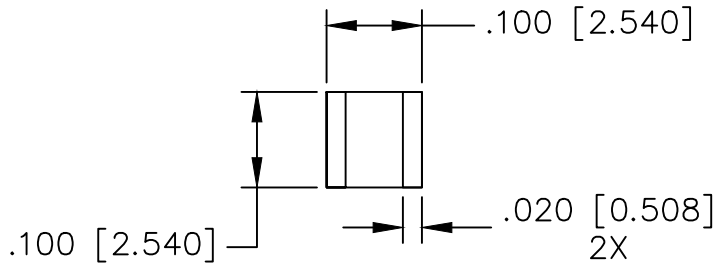


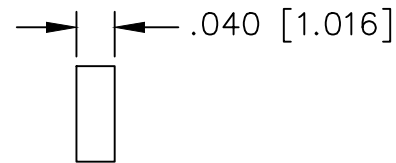
UNAUTHORIZED USE OF THIS
DRAWING IS STRICTLY PROHIBITED

DAR	REV	DESCRIPTION	APPVD	DATE
9843	A	INITIAL RELEASE	TJD	9-24

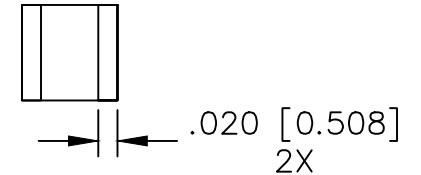
TOP SIDE



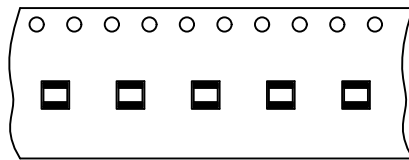
EDGE WRAP, 2X
(OMIT FOR IPP-CCN1010-40N)



BOTTOM SIDE



TAPE AND REEL
ORIENTATION



DESPOOLING
DIRECTION →

NOTES:

1. SEE COOL CHIP APPLICATION NOTE FOR FURTHER INFORMATION.
2. PARTS ARE RoHS AND REACH COMPLIANT.
3. AVAILABLE IN TAPE AND REEL. SEE COOL CHIP APPLICATION NOTE FOR FURTHER INFORMATION.

ELECTRICAL SPECIFICATIONS

THERMAL CONDUCTIVITY: 2.3°C/W
CAPACITANCE (SERIES): <0.1pF
CAPACITANCE (SHUNT): <0.15pF

PART NO.	WRAPPING
IPP-CCN1010-40	EDGE WRAPPED
IPP-CCN1010-40N	NO EDGE WRAP

MATERIAL SUBSTRATE: ALN	DWN S.Cornell	DATE 2-21-24	Innovative Power[®] Products	
FINISH GOLD OVER NICKEL	ENG DG	DATE 2-24		
TOLERANCE IN [MM]	MANUF	DATE	TITLE COOL CHIP, .100 X .100	
.XX ±.02 [.50] .XXX ±.010 [.254]	CAGE CODE: 437R2			
	SHEET 1 OF 1	SCALE 8:1	P/N IPP-CCN1010-40X	REV. A