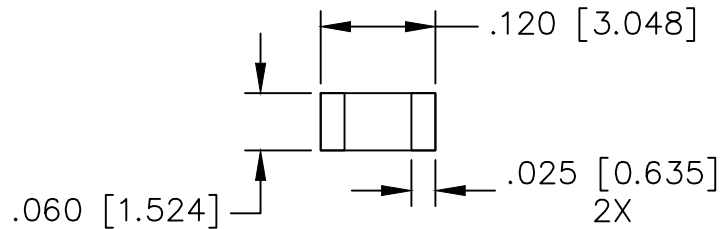


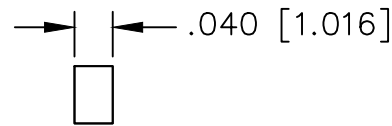
UNAUTHORIZED USE OF THIS  
DRAWING IS STRICTLY PROHIBITED

DAR	REV	DESCRIPTION	APPVD	DATE
9843	A	INITIAL RELEASE	TJD	9-24

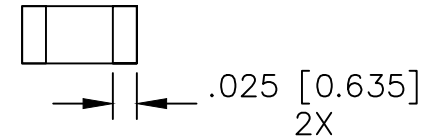
TOP SIDE



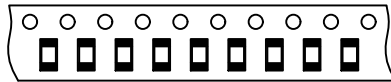
EDGE WRAP, 2X  
(OMIT FOR IPP-CCN1206-40N)



BOTTOM SIDE



TAPE AND REEL  
ORIENTATION



DESPOOLING  
DIRECTION →

NOTES:

1. SEE COOL CHIP APPLICATION NOTE FOR FURTHER INFORMATION.
2. PARTS ARE RoHS AND REACH COMPLIANT.
3. AVAILABLE IN TAPE AND REEL. SEE COOL CHIP APPLICATION NOTE FOR FURTHER INFORMATION.

ELECTRICAL SPECIFICATIONS

THERMAL CONDUCTIVITY: 3.0°C/W  
 CAPACITANCE (SERIES): <0.1pF  
 CAPACITANCE (SHUNT): <0.1pF

PART NO.	WRAPPING
IPP-CCN1206-40	EDGE WRAPPED
IPP-CCN1206-40N	NO EDGE WRAP

MATERIAL SUBSTRATE: ALN	DWN	DG	DATE	7-23	<b>Innovative</b> <sup>Power</sup> <sub>Products</sub>	
	ENG	TJD	DATE	7-23		
FINISH GOLD OVER NICKEL	MANUF	DATE		TITLE COOL CHIP, .120 X .060		
	CAGE CODE: 437R2					
TOLERANCE IN [MM]	.XX ±.02	[.50]	SHEET OF 1 1	SCALE 8:1	P/N IPP-CCN1206-40X	REV. A
	.XXX ±.010	[.254]				