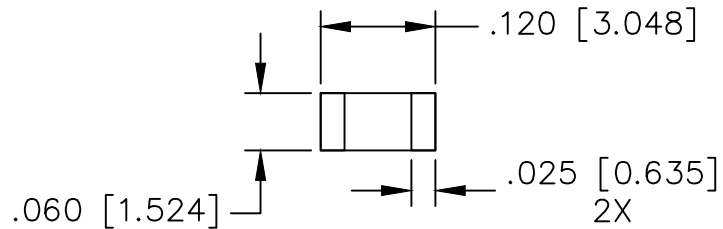


UNAUTHORIZED USE OF THIS
DRAWING IS STRICTLY PROHIBITED

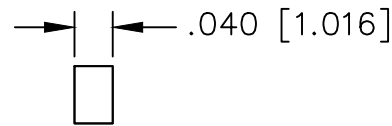
DAR	REV	DESCRIPTION	APPVD	DATE
9365	1	PRE-RELEASE	TJD	7-23
9600	2	SEE DAR	DG	2-24

PRELIMINARY
DIMENSIONS AND SPECIFICATIONS
ARE SUBJECT TO CHANGE UNTIL
INITIAL RELEASE OF DRAWING.

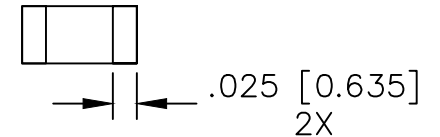
TOP SIDE



EDGE WRAP, 2X
(OMIT FOR IPP-CCN1206-40N)



BOTTOM SIDE



NOTES:

1. SEE COOL CHIP APPLICATION NOTE FOR FURTHER INFORMATION.
2. PARTS ARE RoHS AND REACH COMPLIANT.
3. AVAILABLE IN TAPE AND REEL. SEE COOL CHIP APPLICATION NOTE FOR FURTHER INFORMATION.

ELECTRICAL SPECIFICATIONS

THERMAL CONDUCTIVITY: 3.0°C/W
CAPACITANCE (SERIES): <0.1pF
CAPACITANCE (SHUNT): <0.1pF

PART NO.	WRAPPING
IPP-CCN1206-40	EDGE WRAPPED
IPP-CCN1206-40N	NO EDGE WRAP

MATERIAL SUBSTRATE: ALN	DWN	DG	DATE	7-23	Innovative ^{Power} _{Products}		
	ENG	TJD	DATE	7-23			
FINISH GOLD OVER NICKEL	MANUF	DATE		TITLE COOL CHIP, .120 X .060			
TOLERANCE IN [MM]	CAGE CODE: 437R2			SHEET OF 1 1	SCALE 8:1	P/N IPP-CCN1206-40X	REV. 2
	.XX ±.02 [.50]						
	.XXX ±.010 [.254]						