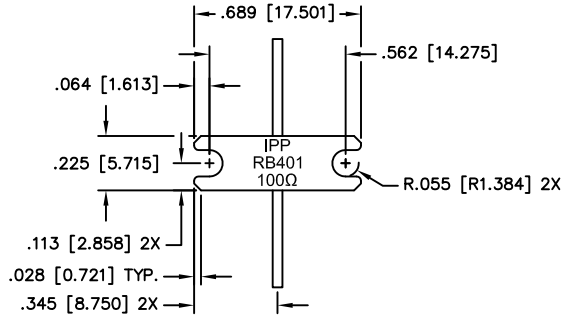
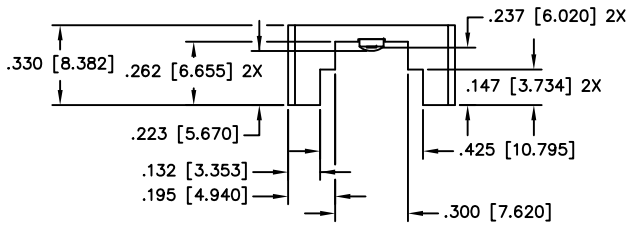


UNAUTHORIZED USE OF THIS
DRAWING IS STRICTLY PROHIBITED

| DAR | REV | DESCRIPTION | APPVD | DATE |
|------|-----|-----------------|-------|-------|
| 5585 | A | INITIAL RELEASE | DG | 5-15 |
| 5897 | B | SEE DAR | DG | 11-15 |



(REF: 100 OHM VALUE SHOWN)

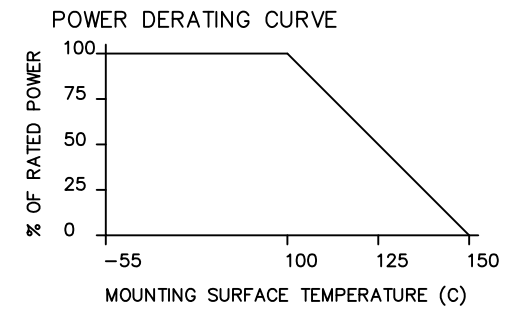


NOTES:

- LEAD MATERIAL: 99.99% PURE SILVER, .040 [1.016] WIDE x .005 [.127] THICK x .500 [12.700] MIN. LONG.
- SUBSTRATE MATERIAL: BeO
- FLANGE MATERIAL: ALUMINUM
- PLATING: NICKEL
- LEAD(S) WELDED TO SUBSTRATE.

ELECTRICAL SPECIFICATIONS

FREQUENCY: DC - 3000 MHZ.



| PART NO. | PER RESISTOR | | | |
|---------------|--------------|-----------|-------|-------------|
| | VALUE | TOLERANCE | POWER | CAPACITANCE |
| IPP-RB401-100 | 100 | +/- 5% | 15W | 0.75 pF |
| IPP-RB401-200 | 200 | +/- 5% | 15W | 0.75 pF |
| IPP-RB401-300 | 300 | +/- 5% | 15W | 0.75 pF |

| | | | | | |
|----------------------|-------------------------------------|-----------------|--------------------------------|----------------------|-----------|
| MATERIAL [2] [3] | DWN S.Cornell | DATE 5-11-15 | | | |
| | ENG DG | DATE 5-15 | | | |
| FINISH [4] | MANUF | DATE | TITLE FEEDBACK RES, FLANGED | | |
| | CAGE CODE: 437R2 | | SIZE B | P/N IPP-RB401-XXX | REV. B |
| TOLERANCE IN [MM] | .XX ±.02 [.50] .XXX ±.010 [.254] | SHEET OF 1 1 | SCALE 2:1 | | |