

UNAUTHORIZED USE OF THIS
DRAWING IS STRICTLY PROHIBITED

ELECTRICAL SPECIFICATIONS		
PART NO.	VALUE	INPUT POWER
IPP-RN215-12R5	12.5 OHMS $\pm 5\%$	300 WATT
IPP-RN215-25	25 OHMS $\pm 5\%$	300 WATT
IPP-RN215-50	50 OHMS $\pm 5\%$	300 WATT
IPP-RN215-100	100 OHMS $\pm 5\%$	300 WATT
IPP-RN215-200	200 OHMS $\pm 5\%$	300 WATT

DAR	REV	DESCRIPTION	APPVD	DATE
7908	A	INITIAL RELEASE	DG	10-19
9622	B	SEE DAR	DG	3-24

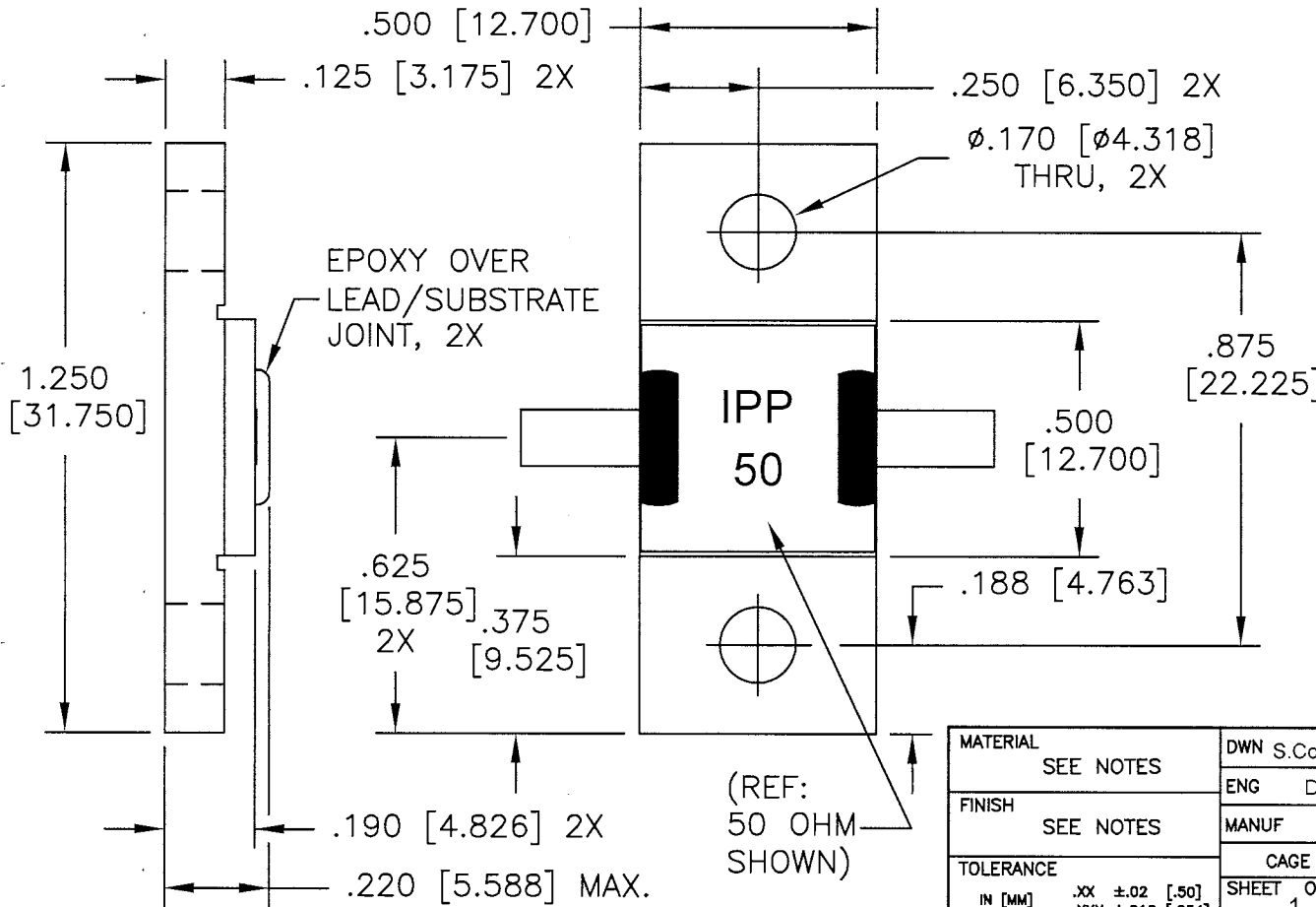
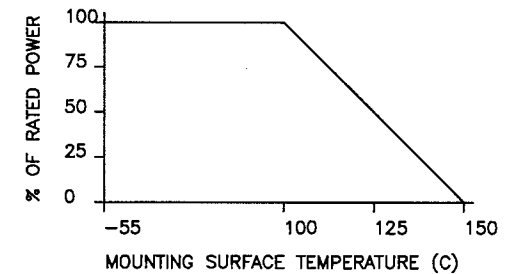
NOTES:

- LEAD MATERIAL: 99.99% PURE SILVER, .120 [3.048] WIDE x .005 [.127] THICK x .250 [6.350] MIN. LONG.
- LEAD FINISH: GOLD PLATE PER MIL-G-45204, TYPE 3, GRADE A, 20 MICRO-INCHES MAX.
- SUBSTRATE MATERIAL: AIN
FLANGE MATERIAL: COPPER
PLATING: NICKEL
- LEAD(S) WELDED TO SUBSTRATE.
- THICK FILM.
- RoHS COMPLIANT.

ELECTRICAL SPECIFICATIONS

INPUT POWER: 300 WATT
CAPACITANCE: 7.8 pF

POWER DERATING CURVE



MATERIAL	SEE NOTES	DWN S.Cornell	DATE 10-28-19	Innovative Power[®] Products	
FINISH	SEE NOTES	ENG DG	DATE 10-19		
TOLERANCE	SEE NOTES	MANUF	DATE	TITLE RESISTOR, AIN, 300 WATT, FLANGE	
		CAGE CODE: 437R2		SIZE B	P/N IPP-RN215-XXX
		SHEET OF 1 1	SCALE 4:1		REV. B