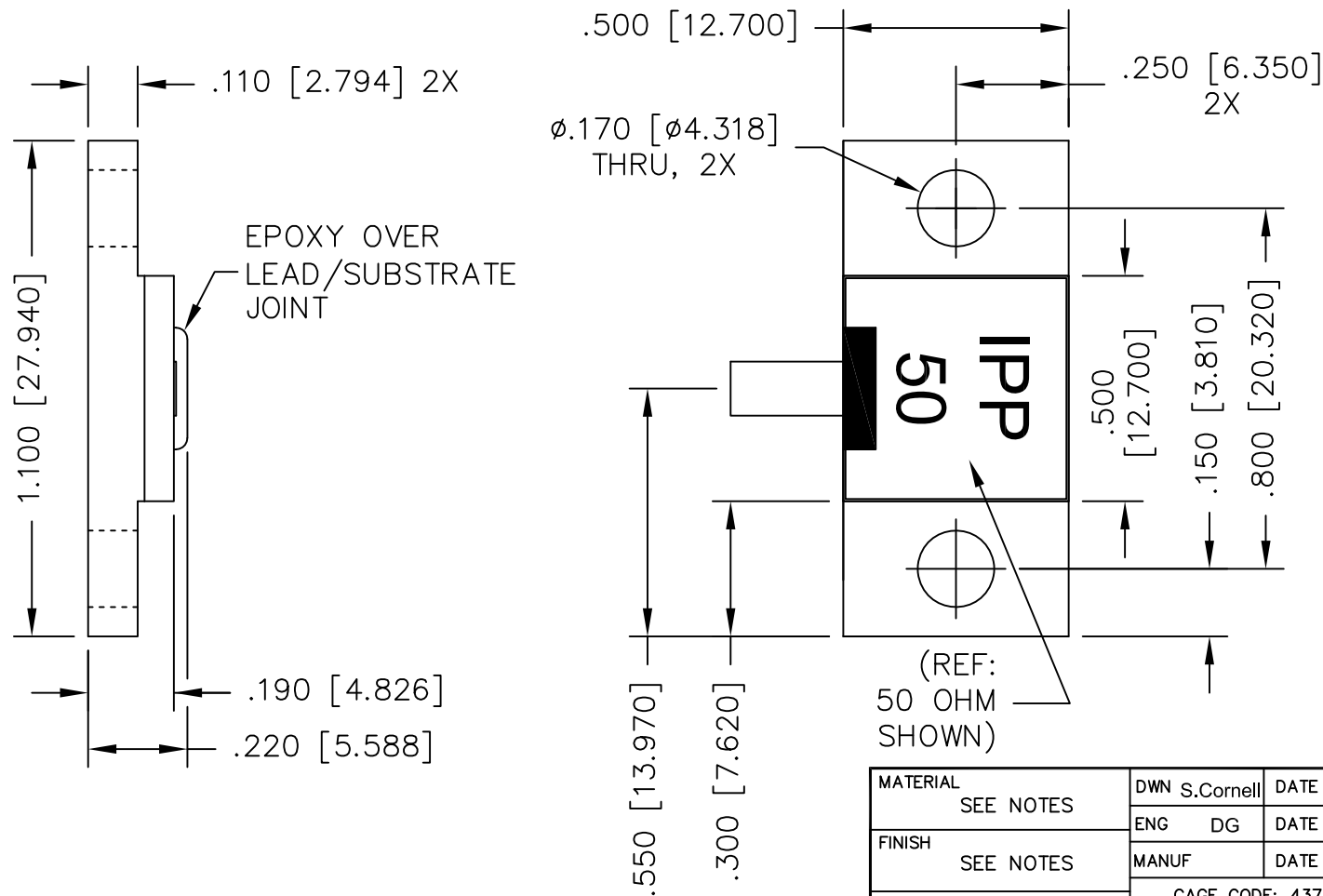


UNAUTHORIZED USE OF THIS  
DRAWING IS STRICTLY PROHIBITED

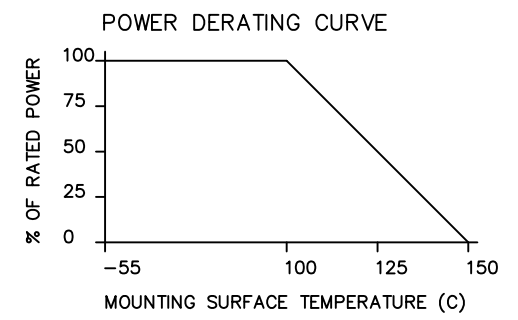
DAR	REV	DESCRIPTION	APPVD	DATE
8038	A	INITIAL RELEASE	DG	2-20

ELECTRICAL SPECIFICATIONS

PART NO.	VALUE	INPUT POWER	FREQUENCY	VSWR
IPP-TN214-50	50 OHMS ±5%	350 WATT	DC-1600 MHz	<1.25:1 @ 1000 MHz <1.30:1 @ 1600 MHz



- NOTES:**
1. LEAD MATERIAL: 99.99% PURE SILVER, .120 [3.048] WIDE x .005 [.127] THICK x .250 [6.350] MIN. LONG.
  2. LEAD FINISH: GOLD PLATE PER MIL-G-45204, TYPE 3, GRADE A, 20 MICRO-INCHES MAX.
  3. SUBSTRATE MATERIAL: AIN FLANGE MATERIAL: COPPER PLATING: NICKEL
  4. LEAD(S) WELDED TO SUBSTRATE.
  5. THICK FILM.
  6. RoHS COMPLIANT



MATERIAL SEE NOTES	DWN S.Cornell	DATE 2-7-19	<b>Innovative Power Products</b>		
FINISH SEE NOTES	ENG DG	DATE 2-19			
TOLERANCE IN [MM] .XX ±.02 [.50] .XXX ±.010 [.254]	CAGE CODE: 437R2		TITLE TERMINATION, AIN, 350 WATT, FLANGE		
SHEET OF 1 1		SCALE 4:1	SIZE B	P/N IPP-TN214-XXX	REV. A